

Recombinant ETS1 (Marker of Tumor Metastasis) Antibody

Mouse Monoclonal Antibody [Clone r1G11]

Catalog No	Format	Size
2113-MSM8-P0	Purified Ab with BSA and Azide at 200ug/ml	20 ug
2113-MSM8-P1	Purified Ab with BSA and Azide at 200ug/ml	100 ug
2113-MSM8-P1ABX	Purified Ab WITHOUT BSA and Azide at 1.0mg/ml	100 ug

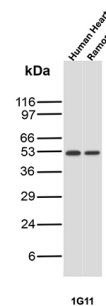
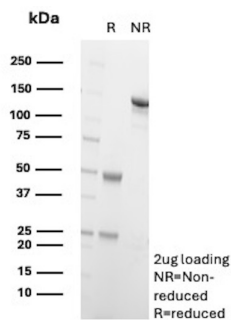
Applications	Tested Dillution	Note
Immunohistochemistry (IHC)	1-2ug/ml	30 min at RT. Staining of formalin-fixed tissues requires heating tissue sections in 10mM Tris with 1mM EDTA, pH 9.0, for 45 min at 95°C followed by cooling at RT for 20 minutes
Western Blot (WB)	2-4ug/ml	

Product Details

Clone	r1G11
Gene Name	ETS1
Immunogen	Prokaryotic recombinant protein corresponding to amino acids 38 to 308 of the human Ets-1 oncoprotein isoform 2
Host	Mouse
Clonality	Monoclonal
Isotype / Light Chain	IgG1 / Kappa
Mol. Weight of Antigen	54kDa
Cellular Localization	Cytoplasm, Nucleus
Species Reactivity	Human
Positive Control	HepG2 or HeLa cells. Human tonsil, lymph node, spleen or lymphoma.

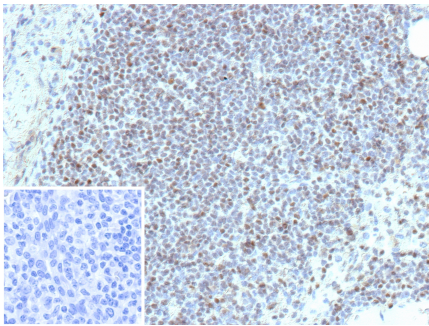
*Optimal dilution for a specific application should be determined.

Product Images for Recombinant ETS1 (Marker of Tumor Metastasis) Antibody



SDS-PAGE Analysis of Purified ETS1 Recombinant Mouse Monoclonal Antibody((r1G11). Confirmation of Purity and Integrity of Antibody.

Western Blot Analysis of Human Heart and Ramos lysates using ETS1 Recombinant Mouse Monoclonal Antibody (r1G11).



Formalin-fixed, paraffin-embedded human lymph node stained with ETS1 Recombinant Mouse Monoclonal Antibody (r1G11). Inset: PBS instead of primary antibody; secondary only negative control.

Specificity & Comments

The proto-oncogene c-Ets-1 is a transcription factor known to regulate expression of a number of genes involved in extracellular matrix remodelling. The processes of tumor invasion and metastasis are thought to depend on the increased proteolytic activity of the invading tumor cells which may involve matrix metalloproteinases, cathepsins B and D and plasminogen activator in the metastatic cascade. Ets-1 interacts with the urokinase-type plasminogen activator gene enhancer and with the promoters of stromelysins-1 and collagenase-1 gene which may implicate it in this process. In situ hybridisation studies have indicated Ets-1 mRNA to be absent from normal colon mucosa but positive in endothelial cells of stromal capillaries and stromal fibroblasts, often with increased staining in fibroblasts adjacent to neoplastic cells.

Limitations and Warranty

This antibody is available for research use only and is not approved for use in diagnosis. There are no warranties, expressed or implied, which extend beyond this description. Company is not liable for any personal injury or economic loss resulting from this product.

Supplied As

200ug/ml of Ab produced in CHO cell mammalian-based expression system. Prepared in 10mM PBS with 0.05% BSA & 0.05% azide. Also available WITHOUT BSA & azide at 1.0mg/ml.

Storage and Stability

Antibody with azide - store at 2 to 8°C. Antibody without azide - store at -20 to -80°C. Antibody is stable for 24 months. Non-hazardous. No MSDS required.

Research Areas

Angiogenesis, Cardiovascular, Endothelial Cell Marker, Hypoxia, Nuclear Marker, Ovarian Cancer