

## Recombinant MCM4 (Pan Cancer Marker) Antibody

Rabbit Monoclonal Antibody [Clone MCM4/13209R]

Catalog No	Format	Size
4173-RBM3-P0	Purified Ab with BSA and Azide at 200ug/ml	20 ug
4173-RBM3-P1	Purified Ab with BSA and Azide at 200ug/ml	100 ug
4173-RBM3-P1ABX	Purified Ab WITHOUT BSA and Azide at 1.0mg/ml	100 ug

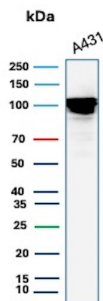
Applications	Tested Dillution	Note
Immunohistochemistry (IHC)	1-2ug/ml	30 min at RT. Staining of formalin-fixed tissues requires heating tissue sections in 10mM Tris with 1mM EDTA, pH 9.0, for 45 min at 95°C followed by cooling at RT for 20 minutes
Western Blot (WB)	2-4ug/ml	

### Product Details

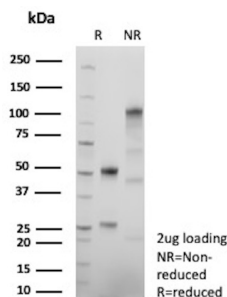
<b>Clone</b>	MCM4/13209R
<b>Gene Name</b>	MCM4
<b>Immunogen</b>	Recombinant fragment (around aa600-800) of human MCM4 protein (exact sequence is proprietary)
<b>Host</b>	Rabbit
<b>Clonality</b>	Monoclonal
<b>Isotype / Light Chain</b>	IgG / Kappa
<b>Mol. Weight of Antigen</b>	100kDa
<b>Cellular Localization</b>	Nucleus
<b>Species Reactivity</b>	Human
<b>Positive Control</b>	Human colon or tonsil.

\*Optimal dilution for a specific application should be determined.

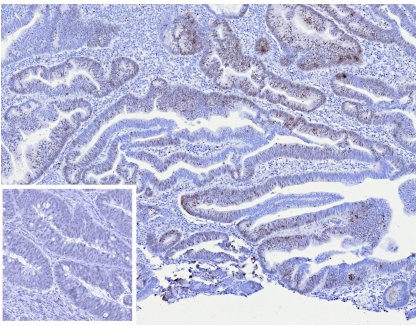
### Product Images for Recombinant MCM4 (Pan Cancer Marker) Antibody



Western blot analysis of A431 cell lysate using MCM4 Recombinant Rabbit Monoclonal Antibody (MCM4/13209R).



SDS-PAGE Analysis Purified MCM4 Recombinant Rabbit Monoclonal Antibody (MCM4/13209R). Confirmation of Purity and Integrity of Antibody.



Formalin-fixed, paraffin-embedded human colon adenocarcinoma stained with MCM4 Recombinant Rabbit Monoclonal Antibody (MCM4/13209R). Inset: PBS instead of primary antibody; secondary only negative control.

### Specificity & Comments

The mini-chromosome maintenance (MCM) family of proteins, including MCM2, MCM3, MCM4 (Cdc21), MCM5 (Cdc46), MCM6 (Mis5) and MCM7 (Cdc47), are regulators of DNA replication that act to ensure replication occurs only once in the cell cycle. Expression of MCM proteins increases during cell growth, peaking at G1 to S phase. The MCM proteins each contain an ATP-binding motif, which is predicted to mediate ATP-dependent opening of double-stranded DNA. MCM proteins are regulated by E2F transcription factors, which induce MCM expression, and by protein kinases, which interact with MCM proteins to maintain the postreplicative state of the cell. MCM2/MCM4 complexes function as substrates for Cdc2/cyclin B *in vitro*. Cleavage of MCM3, which can be prevented by caspase inhibitors, results in the inactivation of the MCM complex (composed of at least MCM proteins 2-6) during apoptosis. A complex composed of MCM4, MCM6 and MCM7 has been shown to be involved in DNA helicase activity; and MCM5 is involved in IFN- $\gamma$ -induced Stat1 transcription activation.

### Limitations and Warranty

This antibody is available for research use only and is not approved for use in diagnosis. There are no warranties, expressed or implied, which extend beyond this description. Company is not liable for any personal injury or economic loss resulting from this product.

### Supplied As

200ug/ml of Ab purified from Bioreactor Concentrate by Protein A/G. Prepared in 10mM PBS with 0.05% BSA & 0.05% azide. Also available WITHOUT BSA & azide at 1.0mg/ml.

### Storage and Stability

Antibody with azide - store at 2 to 8°C. Antibody without azide - store at -20 to -80°C. Antibody is stable for 24 months. Non-hazardous. No MSDS required.

### Research Areas

Epigenetics