

## S100A4 / Metastasin / Calvasculin (Marker of Tumor Metastasis) Antibody

Mouse Monoclonal Antibody [Clone S100A4/1481]

Catalog No	Format	Size
6275-MSM1-B1	Purified Ab conjugated to Biotin	0.5 ml at 100ug/ml

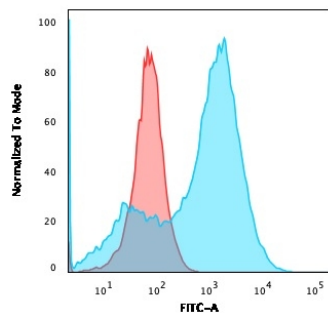
Applications	Tested Dillution	Note
Flow Cytometry (Flow)	1-2ug/million cells	
Immunofluorescence (IF)	1-3ug/ml	
Immunohistochemistry (IHC)	1-2ug/ml	30 min at RT. Staining of formalin-fixed tissues requires heating tissue sections in 10mM Tris with 1mM EDTA, pH 9.0, for 45 min at 95°C followed by cooling at RT for 20 minutes
Western Blot (WB)	2-4ug/ml	

### Product Details

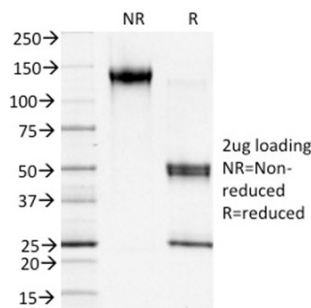
Clone	S100A4/1481
Gene Name	S100A4
Immunogen	Recombinant fragment (around aa 1-200) of human S100A4 protein (exact sequence is proprietary)
Host	Mouse
Clonality	Monoclonal
Isotype / Light Chain	IgG1
Mol. Weight of Antigen	10-12kDa
Cellular Localization	Cytoplasm, Nucleus, Secreted
Species Reactivity	Human, Mouse
Positive Control	HeLa

\*Optimal dilution for a specific application should be determined.

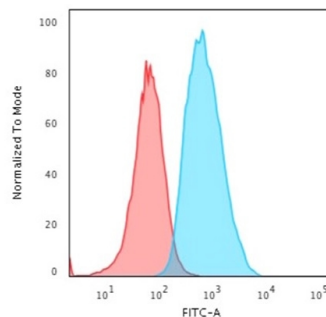
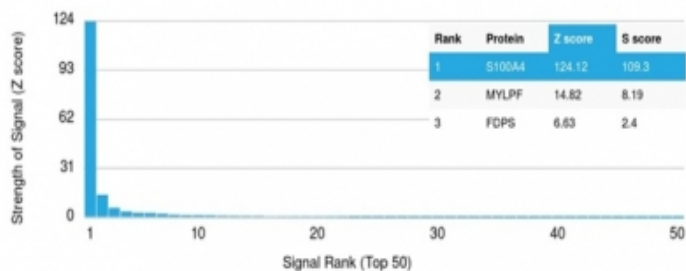
### Product Images for S100A4 / Metastasin / Calvasculin (Marker of Tumor Metastasis) Antibody



Flow Cytometric Analysis of A549 cells using S100A4 Mouse Monoclonal Antibody (S100A4/1481) followed by goat anti-mouse IgG-CF488 (blue); isotype control (red).



SDS-PAGE Analysis Purified S100A4 Mouse Monoclonal Antibody (S100A4/1481). Confirmation of Integrity and Purity of Antibody.



Analysis of Protein Array containing more than 19,000 full-length human proteins using S100A4 Mouse Monoclonal Antibody (S100A4/1481). Z- and S- Score: The Z-score represents the strength of a signal that a monoclonal antibody (MAb) (in combination with a fluorescently-tagged anti-IgG secondary antibody) produces when binding to a particular protein on the HuProt™ array. Z-scores are described in units of standard deviations (SD's) above the mean value of all signals generated on that array. If targets on HuProt™ are arranged in descending order of the Z-score, the S-score is the difference (also in units of SD's) between the Z-score. S-score therefore represents the relative target specificity of a MAb to its intended target. A MAb is considered to specific to its intended target, if the MAb has an S-score of at least 2.5. For example, if a MAb binds to protein X with a Z-score of 43 and to protein Y with a Z-score of 14, then the S-score for the binding of that MAb to protein X is equal to 29.

Flow Cytometric Analysis of T98G cells using S100A4 Mouse Monoclonal Antibody (S100A4/1481) followed by goat anti-mouse IgG-CF488 (blue); isotype control (red).

### Specificity & Comments

S100A4 belongs to the S100 super-family of proteins containing 2 EF-hand calcium-binding domains. S100 genes include at least 25 members, including S100A1-S100A18, trichohyalin, filaggrin, repetin, S100P, and S100Z. S100A4 exerts its function via direct interaction with a number of proteins including P53, P63, non-muscle myosin IIA,  $\beta$ 4 integrin, and liprin b1. S100A4 is overexpressed in highly metastatic cancers, which makes it useful as a marker of tumor progression.

### Supplied As

200ug/ml of Ab purified from Bioreactor Concentrate by Protein A/G. Prepared in 10mM PBS with 0.05% BSA & 0.05% azide. Also available WITHOUT BSA & azide at 1.0mg/ml.

### Storage and Stability

Antibody with azide - store at 2 to 8 °C. Antibody without azide - store at -20 to -80 °C. Antibody is stable for 24 months. Non-hazardous. No MSDS required.

### Research Areas

Dendritic Cell Marker

### Limitations and Warranty

This antibody is available for research use only and is not approved for use in diagnosis. There are no warranties, expressed or implied, which extend beyond this description. Company is not liable for any personal injury or economic loss resulting from this product.