

## Golgi Complex (Marker for Human Cells) Antibody

Mouse Monoclonal Antibody [Clone 371-4]

Catalog No	Format	Size
MSM1-102-CF488-100T	Purified Ab conjugated to CF488	0.5 ml at 100ug/ml

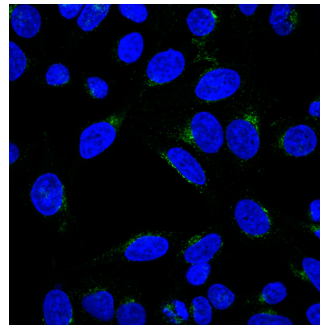
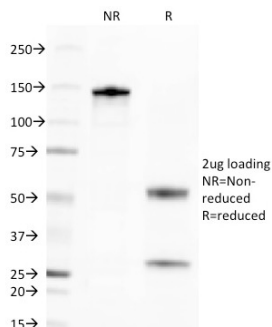
Applications	Tested Dillution	Note
Flow Cytometry (Flow)	1-2ug/million cells	
Immunofluorescence (IF)	1-3ug/ml	
Immunohistochemistry (IHC)	1-2ug/ml	30 min at RT. Staining of formalin-fixed tissues requires heating tissue sections in 10mM Tris with 1mM EDTA, pH 9.0, for 45 min at 95°C followed by cooling at RT for 20 minutes
Western Blot (WB)	2-4ug/ml	

### Product Details

<b>Clone</b>	371-4
<b>Gene Name</b>	N/A
<b>Immunogen</b>	SU-DHL-1 large cell lymphoma cells.
<b>Host</b>	Mouse
<b>Clonality</b>	Monoclonal
<b>Isotype / Light Chain</b>	IgG1
<b>Mol. Weight of Antigen</b>	Not Known
<b>Cellular Localization</b>	golgi-complex-in-cytoplasm, N/A
<b>Species Reactivity</b>	Human
<b>Positive Control</b>	HePG2 or HeLa cells. Human pancreas.

\*Optimal dilution for a specific application should be determined.

### Product Images for Golgi Complex (Marker for Human Cells) Antibody



SDS-PAGE Analysis of Purified Golgi Mouse Monoclonal Antibody (371-4). Confirmation of Purity and Integrity of Antibody.

Confocal Immunofluorescent analysis of MeOH-fixed HeLa cells using CF488-labeled Golgi Complex Mouse Monoclonal Antibody (371-4) (green). DAPI was used to stain the cell nuclei (blue).

### **Specificity & Comments**

This MAb recognizes an antigen associated with the Golgi complex in human cells only. It can be used to stain the Golgi complex in cell or tissue preparations and can be used as a Golgi marker in subcellular fractions. It produces a diffuse staining pattern of the Golgi zone in normal and malignant cells. This MAb is an excellent marker for human cells in xenographic model research. It reacts specifically with human cells. The Golgi apparatus is an organelle present in all eukaryotic cells that forms a part of the endomembrane system. The primary function of the Golgi apparatus is to process and package macromolecules synthesized by the cell for exocytosis or use within the cell. The Golgi is made up of a stack of flattened, membrane-bound sacs known as cisternae, with three functional regions: the cis face, medial region and trans face. Each region consists of various enzymes that selectively modify the macromolecules passing through them, depending on where they are destined to reside. Several spherical vesi

---

### **Limitations and Warranty**

This antibody is available for research use only and is not approved for use in diagnosis. There are no warranties, expressed or implied, which extend beyond this description. Company is not liable for any personal injury or economic loss resulting from this product.

---

### **Supplied As**

200ug/ml of Ab Purified from Bioreactor Concentrate by Protein A/G. Prepared in 10mM PBS with 0.05% BSA & 0.05% azide. Also available WITHOUT BSA at 1.0mg/ml.

---

### **Storage and Stability**

Antibody with azide - store at 2 to 8°C. Antibody without azide - store at -20 to -80°C. Antibody is stable for 24 months. Non-hazardous. No MSDS required.

---