

CD33 / SIGLEC3 (Myeloid Cell Surface Antigen) Antibody

Mouse Monoclonal Antibody [Clone WM53]

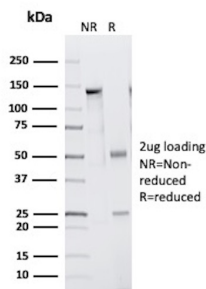
Catalog No	Format	Size
945-MSM1-PE-100T	Purified Ab Conjugated to PE	0.5 ml at 100ug/ml

Applications	Tested Dilution	Note
Flow Cytometry (Flow)	1-2ug/million cells	
Immunofluorescence (IF)	1-3ug/ml	

Product Details	
Clone	WM53
Gene Name	CD33
Immunogen	Human AML cells
Host	Mouse
Clonality	Monoclonal
Isotype / Light Chain	IgG1 / Kappa
Mol. Weight of Antigen	~67kDa
Cellular Localization	Cell membrane, Cell surface, Peroxisome
Species Reactivity	Human
Positive Control	Human dendritic and mast cells. Human lymph nodes and tonsils.

*Optimal dilution for a specific application should be determined.

Product Images for CD33 / SIGLEC3 (Myeloid Cell Surface Antigen) Antibody



SDS-PAGE Analysis of Purified CD33 Mouse Monoclonal Antibody (WM53).
Confirmation of Purity and Integrity of Antibody.

Specificity & Comments

Recognizes a 67kDa glycoprotein, which is identified as CD33 (HLDA IV; WS Code M-505). CD33 is a transmembrane protein of the sialic acid-binding immunoglobulin-like lectin (Siglec) family. It belongs to the immuno-receptor tyrosine-based inhibitory motif (ITIM)-containing molecules able of recruiting protein tyrosine phosphatases SHP-1 and SHP-2 to signal assemblies; these ITIMs are also used for ubiquitin-mediated removal of the receptor from the cell surface. CD33 is expressed on cells of myelomonocytic lineage, binds sialic acid residues in N- and O-glycans on cell surfaces, and is a therapeutic target for acute myeloid leukemia. CD33 is expressed on myeloid progenitors, monocytes, granulocytes, dendritic cells and mast cells. It is absent on platelets, lymphocytes, erythrocytes and hematopoietic stem cells.

Limitations and Warranty

This antibody is available for research use only and is not approved for use in diagnosis. There are no warranties, expressed or implied, which extend beyond this description. Company is not liable for any personal injury or economic loss resulting from this product.

Supplied As

200ug/ml of Ab Purified from Bioreactor Concentrate by Protein A/G. Prepared in 10mM PBS with 0.05% BSA & 0.05% azide. Also available WITHOUT BSA & azide at 1.0mg/ml.

Storage and Stability

Antibody with azide - store at 2 to 8°C. Antibody without azide - store at -20 to -80°C. Antibody is stable for 24 months. Non-hazardous. No MSDS required.

Research Areas

Hematopoietic Stem Cells, Immunology