

CD45 / LCA (Leucocyte Marker) Antibody

Mouse Monoclonal Antibody [Clone 2B11 + PD7/26]

Catalog No	Format	Size
5788-MSM5-FITC-100T	Purified Ab conjugated to FITC	0.5 ml at 100ug/ml

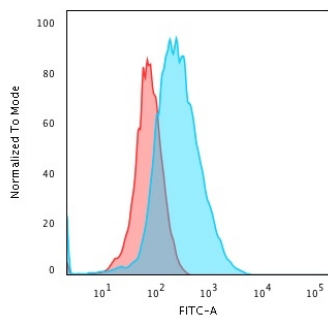
Applications	Tested Dillution	Note
Flow Cytometry (Flow)	1-2ug/million cells	
Immunofluorescence (IF)	1-3ug/ml	
Immunohistochemistry (IHC)	1-2ug/ml	30 min at RT. Staining of formalin-fixed tissues requires heating tissue sections in 10mM Tris with 1mM EDTA, pH 9.0, for 45 min at 95°C followed by cooling at RT for 20 minutes
Western Blot (WB)	2-4ug/ml	

Product Details

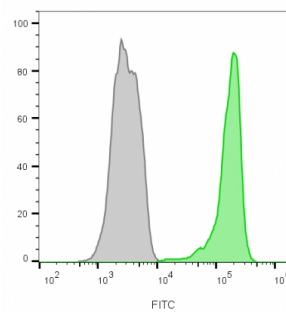
Clone	2B11 + PD7/26
Gene Name	PTPRC
Immunogen	Isolated neoplastic cells from T cell lymphoma (2B11); and human peripheral blood lymphocytes maintained in T cell growth factor (PD7/26).
Host	Mouse
Clonality	Monoclonal
Isotype / Light Chain	IgG1
Mol. Weight of Antigen	180-220kDa
Cellular Localization	Cell membrane, Membrane raft
Species Reactivity	Human
Positive Control	Ramos cells.

*Optimal dilution for a specific application should be determined.

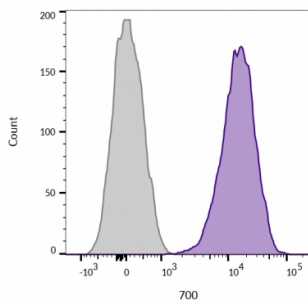
Product Images for CD45 / LCA (Leucocyte Marker) Antibody



Flow Cytometric Analysis of PFA-fixed Jurkat cells using CD45 Mouse Monoclonal Antibody (2B11+PD7/26) followed by goat anti-mouse IgG-CF488 (blue); isotype control (red).



Flow cytometry analysis of lymphocyte-gated PBMCs unstained (gray) and stained with CF488A-labeled CD45 monoclonal antibody (2B11+PD7/26) (green).



Flow Cytometric Analysis of live Jurkat cells unstained (grey) and CD45 Mouse Monoclonal Antibody (2B11+PD7/26) conjugated with CF680 (purple).

Specificity & Comments

Recognizes the CD45 leukocyte common antigen (LCA) family which is comprised of at least four isoforms of membrane glycoproteins (220, 205, 190, 180kDa) expressed on hematopoietic cell lines but absent on non-hematopoietic cell lines, normal and malignant non-hematopoietic tissues. The intracellular portions of these molecules have protein phosphatase activity and are involved in regulation of transmembrane signals. Antibody to CD45 is useful in differential diagnosis of lymphoid tumors from non-hematopoietic undifferentiated neoplasms. A positive result with this MAb is highly indicative of lymphoid or myeloid origin. Certain types of lymphoid neoplasms may lack CD45 (Hodgkin lymphoma, some T-cell lymphomas, and some leukemias) so its absence does not rule out a hematolymphoid tumor. This antibody is expressed almost exclusively by cells of hematopoietic lineage and is present in most benign and malignant lymphocytes as well as plasma cell precursors.

Limitations and Warranty

This antibody is available for research use only and is not approved for use in diagnosis. There are no warranties, expressed or implied, which extend beyond this description. Company is not liable for any personal injury or economic loss resulting from this product.

Supplied As

200ug/ml of Ab Purified from Bioreactor Concentrate by Protein A/G. Prepared in 10mM PBS with 0.05% BSA & 0.05% azide. Also available WITHOUT BSA & azide at 1.0mg/ml.

Storage and Stability

Antibody with azide - store at 2 to 8°C. Antibody without azide - store at -20 to -80°C. Antibody is stable for 24 months. Non-hazardous. No MSDS required.

Research Areas

Autophagy, B Cell Markers, Cancer, Dendritic Cell Marker, Developmental Biology, Hematopoietic Stem Cells, Immuno Oncology, Immunology, Mesenchymal Stem Cell Differentiation