

Recombinant Adiponectin (Marker of Obesity) Antibody

Rabbit Monoclonal Antibody [Clone ADPN/13060R]

Catalog No	Format	Size
9370-RBM10-P1ABX	Purified Ab WITHOUT BSA or Azide at 1.0mg/ml	100 ug
9370-RBM10-P0	Purified Ab with BSA and Azide at 200ug/ml	20 ug
9370-RBM10-P1	Purified Ab with BSA and Azide at 200ug/ml	100 ug
9370-RBM10-P0	Purified Ab with BSA and Azide at 200ug/ml	20 ug
9370-RBM10-P1	Purified Ab with BSA and Azide at 200ug/ml	100 ug

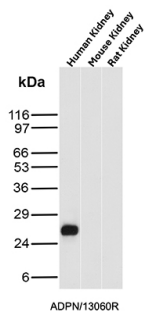
Applications	Tested Dillution	Note
Immunohistochemistry (IHC)	1-2ug/ml	30 min at RT. Staining of formalin-fixed tissues requires heating tissue sections in 10mM Tris with 1mM EDTA, pH 9.0, for 45 min at 95°C followed by cooling at RT for 20 minutes
Western Blot (WB)	2-4ug/ml	

Product Details

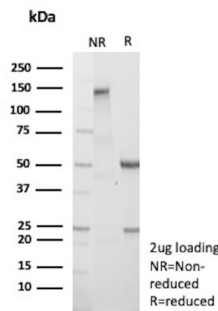
Clone	ADPN/13060R
Immunogen	Recombinant fragment corresponding to the globular head region of the human Adiponectin protein
Host	Rabbit
Clonality	Monoclonal
Isotype / Light Chain	IgG / Kappa
Mol. Weight of Antigen	26.41kDa
Cellular Localization	Secreted
Species Reactivity	Human
Positive Control	HeLa cells. Human kidney.

*Optimal dilution for a specific application should be determined.

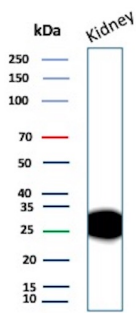
Product Images for Recombinant Adiponectin (Marker of Obesity) Antibody



Western Blot Analysis of Human Kidney, Mouse Kidney and Rat Kidney tissue lysates using ADPN Recombinant Rabbit Monoclonal Antibody (ADPN/13060R).



SDS-PAGE Analysis Purified ADPN Recombinant Rabbit Monoclonal Antibody (ADPN/13060R). Confirmation of Integrity and Purity of Antibody.



Western Blot Analysis of Human Kidney tissue lysate using ADPN Recombinant Rabbit Monoclonal Antibody (ADPN/13060R).

Specificity & Comments

This MAb reacts with adiponectin, an adipocytokine. Adipocytokines are hormones produced in adipose tissue. Adiponectin is abundantly present in plasma and has insulin like effect on glucose levels in the blood. Plasma adiponectin levels are low in insulin resistant patients who are obese, have diabetes mellitus type 2 or HIV-lipodystrophy. In women adiponectin levels tend to be higher than in men, which may be due to androgens suppressing adiponectin levels. Furthermore, adiponectin and leptin are both indicated in regulating body weight through direct action on the hypothalamus, influencing appetite. Obese people have low adiponectin levels while levels in anorexia patients are high. Adiponectin acts as ligand for various receptors, two of which have been identified, one probably involved in carbohydrate assimilation, the other in tuning the rate of metabolism. (Hotta K, et al.) Clone ADPN/4255 is also used in a combination ELISA with clone ADPN/4256, acting as the detection antibody.

Limitations and Warranty

This antibody is available for research use only and is not approved for use in diagnosis. There are no warranties, expressed or implied, which extend beyond this description. Company is not liable for any personal injury or economic loss resulting from this product.

Supplied As

200ug/ml of Ab produced in a mammalian-based expression system. Prepared in 10mM PBS with 0.05% BSA & 0.05% azide. Also available WITHOUT BSA & azide at 1.0mg/ml.

Storage and Stability

Antibody with azide - store at 2 to 8 °C. Antibody without azide - store at -20 to -80 °C. Antibody is stable for 24 months. Non-hazardous. No MSDS required.