

Recombinant Histone H3.1 / H3C7 Antibody

Rabbit Monoclonal Antibody [Clone HH3/13145R]

Catalog No	Format	Size
8350-RBM9-P0	Purified Ab with BSA and Azide at 200ug/ml	20 ug
8350-RBM9-P1	Purified Ab with BSA and Azide at 200ug/ml	100 ug
8350-RBM9-P1ABX	Purified Ab WITHOUT BSA or Azide at 1.0mg/ml	100 ug

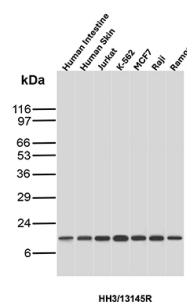
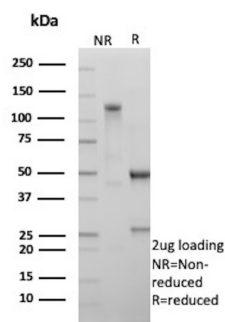
Applications	Tested Dillution	Note
Immunohistochemistry (IHC)	1-2ug/ml	30 min at RT. Staining of formalin-fixed tissues requires heating tissue sections in 10mM Tris with 1mM EDTA, pH 9.0, for 45 min at 95°C followed by cooling at RT for 20 minutes
Western Blot (WB)	2-4ug/ml	

Product Details

Clone	HH3/13145R
Immunogen	Recombinant fragment (around aa1-136) of the human Histone H3 (HH3) protein (exact sequence is proprietary)
Host	Rabbit
Clonality	Monoclonal
Isotype / Light Chain	IgG / Kappa
Mol. Weight of Antigen	15.4kDa
Cellular Localization	Chromosome, Nucleus
Species Reactivity	Human
Positive Control	Human tonsil, liver or breast carcinoma. Intestine, Human Skin, Jurkat, K-562, MCF7, Raji or Ramos

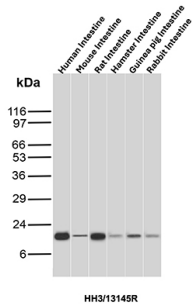
*Optimal dilution for a specific application should be determined.

Product Images for Recombinant Histone H3.1 / H3C7 Antibody

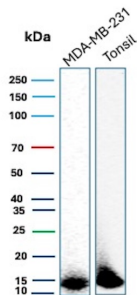


SDS-PAGE Analysis of Purified HH3 Recombinant Rabbit Monoclonal Antibody (HH3/13145R). Confirmation of Purity and Integrity of Antibody.

Western Blot Analysis of Human Intestine, Human Skin, Jurkat, K-562, MCF7, Raji and Ramos lysates using HH3 Recombinant Rabbit Monoclonal Antibody (HH3/13145R).



Western Blot Analysis of Intestine tissue lysates of different species using HH3 Recombinant Rabbit Monoclonal Antibody (HH3/13145R).



Western Blot Analysis of MDA-MB-231 and human tonsil tissue lysate using HH3 Recombinant Rabbit Monoclonal Antibody (HH3/13145R).

Specificity & Comments

Phosphohistone H3 (PHH3) is a marker specific for cells undergoing mitosis. Serine 10 of Histone H3 is phosphorylated in association with mitotic chromatin condensation in late G2 and M phase of the cell cycle and thus, PHH3 can distinguish mitosis from apoptotic nuclei. The range of percentage PHH3 positive tumor nuclei was from 0.0 to 6.6% (median value 0.8%). Increased expression of PHH3 was significantly associated with tumor thickness ($p = 0.031$), presence of tumor ulceration ($p = 0.041$) and tumor necrosis ($p = 0.027$), but not with Clark's level of invasion. High levels of PHH3 was associated with increased mitotic count ($p = 0.003$) and high Ki-67 expression ($p = 0.002$). For central nervous system tumors, melanoma, soft tissue tumors, GIST, etc., PHH3 mAb is helpful for tumor pathological classification and prognosis.

Limitations and Warranty

This antibody is available for research use only and is not approved for use in diagnosis. There are no warranties, expressed or implied, which extend beyond this description. Company is not liable for any personal injury or economic loss resulting from this product.

Supplied As

200ug/ml of Ab produced in a mammalian-based expression system. Prepared in 10mM PBS with 0.05% BSA & 0.05% azide. Also available WITHOUT BSA & azide at 1.0mg/ml.

Storage and Stability

Antibody with azide - store at 2 to 8 °C. Antibody without azide - store at -20 to -80 °C. Antibody is stable for 24 months. Non-hazardous. No MSDS required.