

IGF1R alpha / CD221 Antibody

Mouse Monoclonal Antibody [Clone 24-60]

| Catalog No | Format | Size |
|-----------------|---|--------|
| 3480-MSM6-P0 | Purified Ab with BSA and Azide at 200ug/ml | 20 ug |
| 3480-MSM6-P1 | Purified Ab with BSA and Azide at 200ug/ml | 100 ug |
| 3480-MSM6-P1ABX | Purified Ab WITHOUT BSA and Azide at 1.0mg/ml | 100 ug |

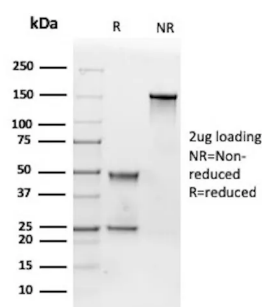
| Applications | Tested Dillution | Note |
|-------------------------|------------------|------|
| Immunofluorescence (IF) | 1-3ug/ml | |

Product Details

| | |
|-------------------------------|--|
| Clone | 24-60 |
| Gene Name | IGF1R |
| Immunogen | IGF-1R/3T3 mouse fibroblasts transfected with human type I IGF-receptor cDNA |
| Host | Mouse |
| Clonality | Monoclonal |
| Isotype / Light Chain | IgG2a / Kappa |
| Mol. Weight of Antigen | 130kDa (IGF-1R); 97kDa (IGF-1R); 200kDa (pro-IGF-1R) |
| Cellular Localization | Cell membrane |
| Species Reactivity | Human, Mouse |
| Positive Control | Human breast carcinoma or colon carcinoma. |

**Optimal dilution for a specific application should be determined.*

Product Images for IGF1R alpha / CD221 Antibody



SDS-PAGE Analysis of Purified IGF-1R Mouse Monoclonal Antibody (24-60).
Confirmation of Purity and Integrity of Antibody.

Specificity & Comments

This antibody is specific for the human insulin-like growth factor 1 receptor (IGF1R). It recognizes the extracellular portion of the receptor, specifically an epitope in the cysteine rich domain of the alpha subunit, between amino acids 184 and 283. It does not cross-react with rat or mouse IGF1R or human insulin receptors in co-precipitation or immunodepletion assays. The ability of this antibody to bind human IGF1R has been confirmed in IGF1 binding assays using both IGF1R-overexpressing IGF1R/3T3 cells and soluble receptors (Soos et al, 1992). This antibody efficiently precipitates human IGF1R solubilised from IGF1R/3T3 cells (Soos et al, 1992) and human placental membranes (Bailly et al, 1997), and has been used in immunoprecipitation analysis of 293 cells transfected with IGF1R or chimeric IGF1R-insulin receptor (IR) constructs (Schumacher et al, 1993). When immobilised, this antibody has been shown to remove essentially all soluble, IGF1R/3T3-derived IGF1R (Soos et al, 1992) and human placental membrane-derived IGF1R (Soos et al, 1993) in immunodepletion experiments. This antibody strongly inhibits IGF1 binding to its receptor (Soos et al, 1992), and has been shown to suppress IGF1-mediated stimulation of skin fibroblast proliferation (Okubo et al 2003).

Limitations and Warranty

This antibody is available for research use only and is not approved for use in diagnosis. There are no warranties, expressed or implied, which extend beyond this description. Company is not liable for any personal injury or economic loss resulting from this product.

Supplied As

200ug/ml of Ab purified from Bioreactor Concentrate by Protein A/G. Prepared in 10mM PBS with 0.05% BSA & 0.05% azide. Also available WITHOUT BSA & azide at 1.0mg/ml.

Storage and Stability

Antibody with azide - store at 2 to 8 °C. Antibody without azide - store at -20 to -80 °C. Antibody is stable for 24 months. Non-hazardous. No MSDS required.

Research Areas

Breast Cancer, Cardiovascular, AKT Signaling, Signal Transduction