

## TFAM / TCF6 (Transcription factor A, mitochondrial) / mtTFA Antibody

Mouse Monoclonal Antibody [Clone TFAM/9713]

Catalog No	Format	Size
7019-MSM1-P0	Purified Ab with BSA and Azide at 200ug/ml	20 ug
7019-MSM1-P1	Purified Ab with BSA and Azide at 200ug/ml	100 ug
7019-MSM1-P1ABX	Purified Ab WITHOUT BSA and Azide at 1.0mg/ml	100 ug

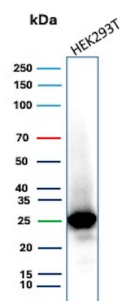
Applications	Tested Dillution	Note
Immunohistochemistry (IHC)	1-2ug/ml	30 min at RT. Staining of formalin-fixed tissues requires heating tissue sections in 10mM Tris with 1mM EDTA, pH 9.0, for 45 min at 95°C followed by cooling at RT for 20 minutes
Western Blot (WB)	2-4ug/ml	

### Product Details

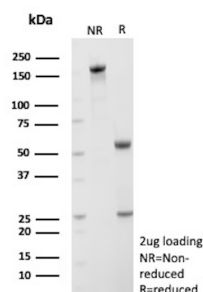
<b>Clone</b>	TFAM/9713
<b>Gene Name</b>	TFAM
<b>Immunogen</b>	Recombinant fragment (around aa1-200) of human TFAM protein (exact sequence is proprietary)
<b>Host</b>	Mouse
<b>Clonality</b>	Monoclonal
<b>Isotype / Light Chain</b>	IgG / Kappa
<b>Mol. Weight of Antigen</b>	25kDa
<b>Cellular Localization</b>	Mitochondrion, Mitochondrion matrix
<b>Species Reactivity</b>	Human
<b>Positive Control</b>	HEK293T, brain, heart, intestine, kidney, liver, lung, pancreas, skeletal muscle, skin or spleen.

\*Optimal dilution for a specific application should be determined.

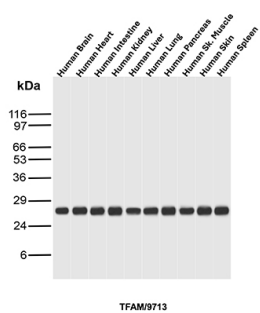
### Product Images for TFAM / TCF6 (Transcription factor A, mitochondrial) / mtTFA Antibody



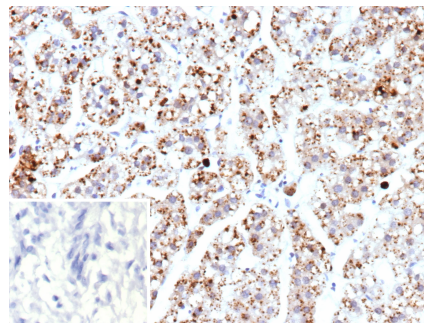
Western Blot Analysis of HEK293T cell lysate using TFAM Mouse Monoclonal Antibody (TFAM/9713).



SDS-PAGE Analysis Purified TFAM Mouse Monoclonal Antibody (TFAM/9713). Confirmation of Purity and Integrity of Antibody.



Western Blot Analysis of brain, heart, intestine, kidney, liver, lung, pancreas, skeletal muscle, skin and spleen tissue lysates of human using TFAM Mouse Monoclonal Antibody (TFAM/9713).



Formalin-fixed, paraffin-embedded human adrenal gland stained with TFAM Mouse Monoclonal Antibody (TFAM/9713). Inset: PBS instead of primary antibody; secondary only negative control.

### Specificity & Comments

mtTFA (mitochondrial transcription factor A), also known as mtTF1, TFAM, TCF6 (for transcription factor 6-like1), TCF6L2 and tsHMG, is a nuclear-encoded gene product that is imported into the mitochondria. mtTFA is required for many aspects of mitochondrial biogenesis including the replication and transcription of mitochondrial DNA (mtDNA). In mouse, testis-specific mtTFA is missing the mitochondria targeting sequence and is present in the nucleus rather than the mitochondria. This form of mtTFA is located primarily in the nuclei of elongated spermatids and may be involved in the regulation of gene expression of the haploid male genome. During mouse and human spermatogenesis there is a reduction of mtTFA protein levels and a reduction in mtDNA copy number. These features may provide one of the mechanisms by which paternal mtDNA transmission is prevented. mtTFA has been associated with mitochondrial disorder in humans characterized by ocular myopathy, exercise intolerance and muscle wasting.

### Limitations and Warranty

This antibody is available for research use only and is not approved for use in diagnosis. There are no warranties, expressed or implied, which extend beyond this description. Company is not liable for any personal injury or economic loss resulting from this product.

### Supplied As

200ug/ml of Ab purified from Bioreactor Concentrate by Protein A/G. Prepared in 10mM PBS with 0.05% BSA & 0.05% azide. Also available WITHOUT BSA & azide at 1.0mg/ml.

### Storage and Stability

Antibody with azide - store at 2 to 8 °C. Antibody without azide - store at -20 to -80 °C. Antibody is stable for 24 months. Non-hazardous. No MSDS required.

### Research Areas

Cardiovascular, Epigenetics, Metabolism, Mitochondria Marker, Neuroscience, Signal Transduction, Transcription Factors