

## HBEGF / DTR Antibody

Mouse Monoclonal Antibody [Clone HBEGF/9503]

| Catalog No      | Format  | Size   |
|-----------------|---|--------|
| 1839-MSM2-P0    | Purified Ab with BSA and Azide at 200ug/ml    | 20 ug  |
| 1839-MSM2-P1    | Purified Ab with BSA and Azide at 200ug/ml    | 100 ug |
| 1839-MSM2-P1ABX | Purified Ab WITHOUT BSA and Azide at 1.0mg/ml | 100 ug |

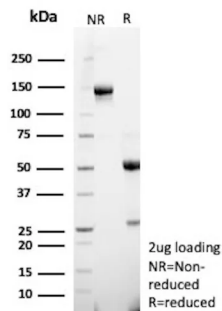
| Applications               | Tested Dillution | Note  |
|----------------------------|------------------|---|
| Immunohistochemistry (IHC) | 1-2ug/ml         | 30 min at RT. Staining of formalin-fixed tissues requires heating tissue sections in 10mM Tris with 1mM EDTA, pH 9.0, for 45 min at 95°C followed by cooling at RT for 20 minutes |
| Western Blot (WB)          | 2-4ug/ml         |   |

### Product Details

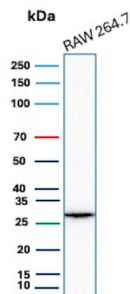
|                               |  |
|-------------------------------|--|
| <b>Clone</b>                  | HBEGF/9503   |
| <b>Gene Name</b>              | HBEGF  |
| <b>Immunogen</b>              | Recombinant fragment (around aa1-208) of human HBEGF protein (exact sequence is proprietary) |
| <b>Host</b>                   | Mouse  |
| <b>Clonality</b>              | Monoclonal   |
| <b>Isotype / Light Chain</b>  | IgG2b / Kappa  |
| <b>Mol. Weight of Antigen</b> | 23kDa  |
| <b>Cellular Localization</b>  | Cell membrane, Membrane, Secreted  |
| <b>Species Reactivity</b>     | Human  |
| <b>Positive Control</b>       | RAW 264.7, Heart, PANC28.  |

\*Optimal dilution for a specific application should be determined.

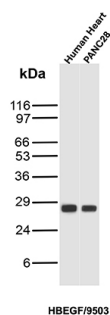
### Product Images for HBEGF / DTR Antibody



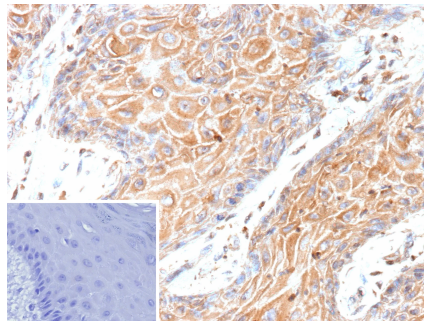
SDS-PAGE Analysis of Purified HBEGF Mouse Monoclonal Antibody (HBEGF/9503). Confirmation of Purity and Integrity of Antibody.



Western Blot Analysis of RAW 264.7 cell lysate using HBEGF Mouse Monoclonal Antibody (HBEGF/9503).



Western Blot Analysis of human heart and PANC28 lysates using HBEGF Mouse Monoclonal Antibody (HBEGF/9503).



Formalin-fixed, paraffin-embedded human skin stained with HB-EGF Mouse Monoclonal Antibody (HBEGF/9503). Inset: PBS instead of primary antibody; secondary only negative control.

### Specificity & Comments

Enables growth factor activity and heparin binding activity. Involved in several processes, including epidermal growth factor receptor signaling pathway; positive regulation of protein kinase B signaling; and positive regulation of wound healing. Located in cell surface and extracellular space. Implicated in glomerulosclerosis and perinatal necrotizing enterocolitis.

### Supplied As

200ug/ml of Ab purified from Bioreactor Concentrate by Protein A/G. Prepared in 10mM PBS with 0.05% BSA & 0.05% azide. Also available WITHOUT BSA & azide at 1.0mg/ml.

### Storage and Stability

Antibody with azide - store at 2 to 8°C. Antibody without azide - store at -20 to -80°C. Antibody is stable for 24 months. Non-hazardous. No MSDS required.

### Research Areas

Angiogenesis, Cancer, Signal Transduction

### Limitations and Warranty

This antibody is available for research use only and is not approved for use in diagnosis. There are no warranties, expressed or implied, which extend beyond this description. Company is not liable for any personal injury or economic loss resulting from this product.