

## Recombinant Fibrinogen gamma chain / FGG Antibody

Rabbit Monoclonal Antibody [Clone FGG/13043R]

Catalog No	Format	Size
2266-RBM3-P0	Purified Ab with BSA and Azide at 200ug/ml	20 ug
2266-RBM3-P1	Purified Ab with BSA and Azide at 200ug/ml	100 ug
2266-RBM3-P1ABX	Purified Ab WITHOUT BSA or Azide at 1.0mg/ml	100 ug

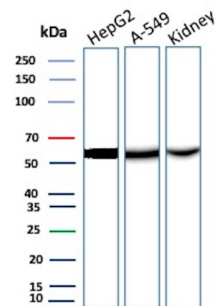
Applications	Tested Dillution	Note
Western Blot (WB)	2-4ug/ml	

### Product Details

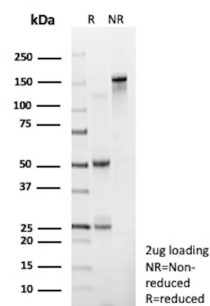
<b>Clone</b>	FGG/13043R
<b>Immunogen</b>	Recombinant fragment of the human Fibrinogen gamma chain protein (exact sequence is proprietary)
<b>Host</b>	Rabbit
<b>Clonality</b>	Monoclonal
<b>Isotype / Light Chain</b>	IgG / Kappa
<b>Mol. Weight of Antigen</b>	51.51kDa
<b>Cellular Localization</b>	Secreted
<b>Species Reactivity</b>	Human
<b>Positive Control</b>	HepG2 or A-549 cells. Human kidney.

\*Optimal dilution for a specific application should be determined.

### Product Images for Recombinant Fibrinogen gamma chain / FGG Antibody



Western Blot Analysis of HepG2 and A-549 cell lysates and human kidney tissue lysate using Fibrinogen Gamma Rabbit Recombinant Monoclonal Antibody (FGG/13043R).



SDS-PAGE Analysis of Purified D-Dimer / Fibrinogen Gamma Recombinant Rabbit Monoclonal Antibody (FGG/13043R). Confirmation of Purity and Integrity of Antibody.

### **Specificity & Comments**

The plasma glycoprotein Fibrinogen is synthesized in the liver and comprises three structurally different subunits: a, b and g. Fibrinogen is important in platelet aggregation, the final step of the coagulation cascade (i.e. the formation of Fibrin) and determination of plasma viscosity and erythrocyte aggregation. It is both constitutively expressed and inducible during an acute phase reaction. Hemostasis following tissue injury deploys essential plasma procoagulants (Prothrombin and Factors X, IX, V and VIII), which are involved in a blood coagulation cascade leading to the formation of insoluble Fibrin clots and the promotion of platelet aggregation. Following vascular injury, Fibrinogen is cleaved by Thrombin to form Fibrin, which is the most abundant component of blood clots. The cleavage products of Fibrinogen regulate cell adhesion and spreading, display vasoconstrictor and chemotactic activities and are mitogens for several cell types. This antibody is directed against a neoantigenic determinant expressed on the human fragment D-dimer. D-dimer is a protein fragment (small piece) that's made when a blood clot dissolves in your body. At D-dimer test is done to determine if a person has any blood clotting disorder.

---

### **Limitations and Warranty**

This antibody is available for research use only and is not approved for use in diagnosis. There are no warranties, expressed or implied, which extend beyond this description. Company is not liable for any personal injury or economic loss resulting from this product.

---

### **Supplied As**

200ug/ml of Ab produced in a mammalian-based expression system. Prepared in 10mM PBS with 0.05% BSA & 0.05% azide. Also available WITHOUT BSA & azide at 1.0mg/ml.

---

### **Storage and Stability**

Antibody with azide - store at 2 to 8 °C. Antibody without azide - store at -20 to -80 °C. Antibody is stable for 24 months. Non-hazardous. No MSDS required.

---