

VEGF-A (Vascular Endothelial Growth Factor) Antibody

Mouse Monoclonal Antibody [Clone VEGF/9366]

Catalog No	Format	Size
7422-MSM10-P0	Purified Ab with BSA and Azide at 200ug/ml	20 ug
7422-MSM10-P1	Purified Ab with BSA and Azide at 200ug/ml	100 ug
7422-MSM10-P1ABX	Purified Ab WITHOUT BSA and Azide at 1.0mg/ml	100 ug

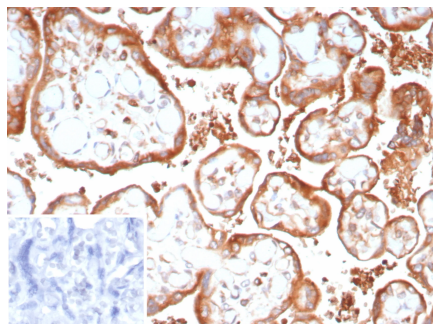
Applications	Tested Dillution	Note
Immunohistochemistry (IHC)	1-2ug/ml	30 min at RT. Staining of formalin-fixed tissues requires heating tissue sections in 10mM Tris with 1mM EDTA, pH 9.0, for 45 min at 95°C followed by cooling at RT for 20 minutes

Product Details

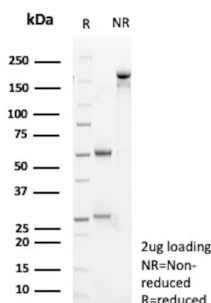
Clone	VEGF/9366
Gene Name	VEGFA
Immunogen	Recombinant fragment (around aa1-200) of human VEGF protein (exact sequence is proprietary)
Host	Mouse
Clonality	Monoclonal
Isotype / Light Chain	IgG2 / Kappa
Mol. Weight of Antigen	19-22kDa (reducing) and 38kDa-44kDa (non-reducing)
Cellular Localization	Secreted
Species Reactivity	Human
Positive Control	Tumor cells in astrocytomas, breast or ovarian carcinomas.

*Optimal dilution for a specific application should be determined.

Product Images for VEGF-A (Vascular Endothelial Growth Factor) Antibody



Formalin-fixed, paraffin-embedded human placenta stained with VEGF-A Mouse Monoclonal Antibody (VEGF/9366). Inset: PBS instead of primary antibody; secondary only negative control.



SDS-PAGE Analysis Purified VEGF Mouse Monoclonal Antibody (VEGF/9366). Confirmation of Purity and Integrity of Antibody.

Specificity & Comments

This MAb recognizes proteins of 19-22kDa (reducing) and 38kDa-44kDa (non-reducing), identified as various isoforms of Vascular Endothelial Growth Factor or Vascular Permeability Factor (VEGF/VPF). It is highly specific to VEGF, which is a homodimeric, disulfide-linked glycoprotein with a close homology to platelet derived growth factor (PDGF). There are multiple isoforms of VEGF containing 206-, 189-, 165-, and 121-amino acid residues. The smaller two isoforms, VEGF165 and VEGF121, are secreted proteins and act as diffusible agents, whereas the larger two remain cell associated. VEGF/VPF plays an important role in angiogenesis, which promotes tumor progression and metastasis.

Limitations and Warranty

This antibody is available for research use only and is not approved for use in diagnosis. There are no warranties, expressed or implied, which extend beyond this description. Company is not liable for any personal injury or economic loss resulting from this product.

Supplied As

200ug/ml of Ab Purified from Bioreactor Concentrate by Protein A/G. Prepared in 10mM PBS with 0.05% BSA & 0.05% azide. Also available WITHOUT BSA & azide at 1.0mg/ml.

Storage and Stability

Antibody with azide - store at 2 to 8°C. Antibody without azide - store at -20 to -80°C. Antibody is stable for 24 months. Non-hazardous. No MSDS required.

Research Areas

BBB VCAM-1 Signaling, Bladder Cancer, Cardiovascular, Colon Cancer, Cytokine Signaling, Hypoxia, Immunology, Infectious Disease, Neural Stem Cells, Signal Transduction, Stem Cell Differentiation, Transcription Factors
