

Recombinant TLE1 (Synovial Sarcoma Marker) Antibody

Mouse Monoclonal Antibody [Clone rTLE1/13032]

Catalog No	Format	Size
7088-MSM8-P0	Purified Ab with BSA and Azide at 200ug/ml	20 ug
7088-MSM8-P1	Purified Ab with BSA and Azide at 200ug/ml	100 ug
7088-MSM8-P1ABX	Purified Ab WITHOUT BSA or Azide at 1.0mg/ml	100 ug

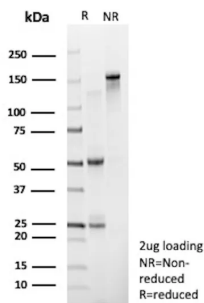
Applications	Tested Dillution	Note
Immunohistochemistry (IHC)	1-2ug/ml	30 min at RT. Staining of formalin-fixed tissues requires heating tissue sections in 10mM Tris with 1mM EDTA, pH 9.0, for 45 min at 95°C followed by cooling at RT for 20 minutes
Western Blot (WB)	2-4ug/ml	

Product Details

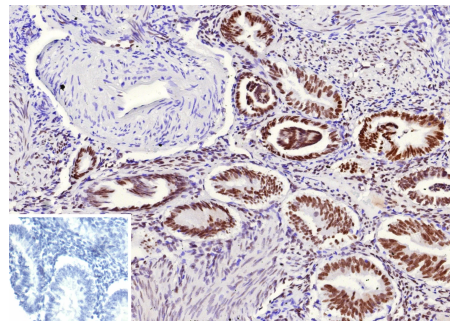
Clone	rTLE1/13032
Immunogen	Recombinant fragment (around aa203-218) of the human TLE1 protein (exact sequence is proprietary)
Host	Mouse
Clonality	Monoclonal
Isotype / Light Chain	IgG2b / Kappa
Mol. Weight of Antigen	83.2kDa
Cellular Localization	Nucleus
Species Reactivity	Human
Positive Control	HeLa, HepG2 or Jurkat cells. Human endometrium carcinoma or sarcomas.

*Optimal dilution for a specific application should be determined.

Product Images for Recombinant TLE1 (Synovial Sarcoma Marker) Antibody



SDS-PAGE Analysis of Purified TLE1 Recombinant mouse Monoclonal Antibody (rTLE1/13032). Confirmation of Purity and Integrity of Antibody.



Formalin-fixed, paraffin-embedded human endometrium stained with TLE1 Recombinant Rabbit Monoclonal Antibody (rTLE1/13032). Inset: PBS instead of primary antibody; secondary only negative control.

Specificity & Comments

Key players in the Notch pathway are the TLE genes, which are human homologs of the *Drosophila* groucho gene. Groucho is a transcriptional repressor that plays a key role in neurogenesis, segmentation and sex determination. Transducin-like enhancer protein1 (TLE1) is a protein that is encoded by the TLE1 gene and is involved in control of hematopoiesis, neuronal, and terminal epithelial differentiation. Positive immunohistochemical nuclear staining with anti-TLE-1 has been shown to be a useful addition to an IHC panel when differentiating synovial sarcoma from other soft tissue malignancies.

Supplied As

200ug/ml of Ab produced in a mammalian-based expression system. Prepared in 10mM PBS with 0.05% BSA & 0.05% azide. Also available WITHOUT BSA & azide at 1.0mg/ml.

Storage and Stability

Antibody with azide - store at 2 to 8 °C. Antibody without azide - store at -20 to -80 °C. Antibody is stable for 24 months. Non-hazardous. No MSDS required.

Limitations and Warranty

This antibody is available for research use only and is not approved for use in diagnosis. There are no warranties, expressed or implied, which extend beyond this description. Company is not liable for any personal injury or economic loss resulting from this product.
