

Recombinant CD19 (B-Lymphocyte Marker) Antibody

Rabbit Monoclonal Antibody [Clone CD19/13031R]

Catalog No	Format	Size
930-RBM49-P0	Purified Ab with BSA and Azide at 200ug/ml	20 ug
930-RBM49-P1	Purified Ab with BSA and Azide at 200ug/ml	100 ug
930-RBM49-P1ABX	Purified Ab WITHOUT BSA and Azide at 1.0mg/ml	100 ug

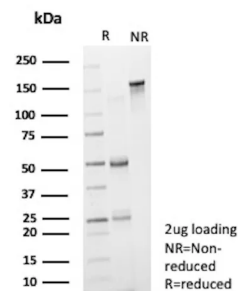
Applications	Tested Dillution	Note
--------------	------------------	------

Product Details

Clone	CD19/13031R
Gene Name	CD19
Immunogen	Recombinant human CD19 protein
Host	Rabbit
Clonality	Monoclonal
Isotype / Light Chain	IgG / Kappa
Mol. Weight of Antigen	95kDa
Cellular Localization	Cell membrane, Membrane raft
Species Reactivity	Human
Positive Control	Human tonsil, lymph node or spleen.

*Optimal dilution for a specific application should be determined.

Product Images for Recombinant CD19 (B-Lymphocyte Marker) Antibody



SDS-PAGE Analysis of Purified CD19 Rabbit Recombinant Monoclonal Antibody (CD19/13031R). Confirmation of Purity and Integrity of Antibody.

Specificity & Comments

CD19 is a transmembrane glycoprotein that contains two extracellular immunoglobulin-like domains. CD19 is present in both benign and malignant B-cells and is considered to be the most reliable surface marker of this lineage over a wide range of maturational stages. In normal lymphoid tissue, CD19 is observed in germinal centers, in mantle zone cells, and in scattered cells of the inter-follicular areas. Anti-CD19 exhibits an overall immunoreactivity pattern similar to those of the antibodies against CD20 and CD22. However, in contrast to CD20, expression of CD19 is continuous throughout B-cell development and through terminal differentiation of B-cells into plasma cells. Anti-CD19 positivity is seen in the vast majority of B-cell neoplasms commonly at a lower intensity than normal B-cell counterparts. Plasma cell neoplasms are nearly always negative, as are T-cell neoplasms. CD19 antibody binds to the human CD19 protein, a transmembrane protein expressed in all B lineage cells including human plasma cells. CD19 plays two major roles in human B cells: it acts as an adaptor protein to recruit cytoplasmic signaling proteins to the membrane and works within the CD19/CD21 complex to decrease the threshold for B cell receptor signaling pathways. CD19 is a biomarker for B lymphocyte development, lymphoma diagnosis and can be utilized as a target for leukemia immunotherapies.

Limitations and Warranty

This antibody is available for research use only and is not approved for use in diagnosis. There are no warranties, expressed or implied, which extend beyond this description. Company is not liable for any personal injury or economic loss resulting from this product.

Supplied As

200ug/ml of Ab purified from Bioreactor Concentrate by Protein A/G. Prepared in 10mM PBS with 0.05% BSA & 0.05% azide. Also available WITHOUT BSA & azide at 1.0mg/ml.

Storage and Stability

Antibody with azide - store at 2 to 8°C. Antibody without azide - store at -20 to -80°C. Antibody is stable for 24 months. Non-hazardous. No MSDS required.

Research Areas

B Cell Markers, Cardiovascular, Complement System, Hematopoietic Stem Cells, Immune checkpoint, Immunology, Infectious Disease, Mesenchymal Stem Cell Differentiation, Signal Transduction
