

Mesothelin (Mesothelial Marker) Antibody

Mouse Monoclonal Antibody [Clone MSLN/2131]

Catalog No	Format	Size
10232-MSM1-B1	Purified Ab conjugated to Biotin	0.5 ml at 100ug/ml

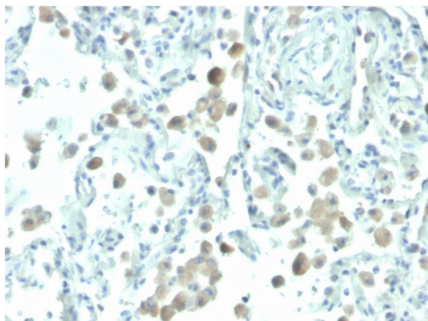
Applications	Tested Dillution	Note
Immunohistochemistry (IHC)	1-2ug/ml	30 min at RT. Staining of formalin-fixed tissues requires heating tissue sections in 10mM Tris with 1mM EDTA, pH 9.0, for 45 min at 95°C followed by cooling at RT for 20 minutes

Product Details

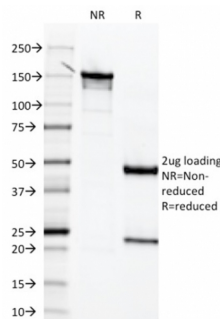
Clone	MSLN/2131
Gene Name	MSLN
Immunogen	Recombinant fragment (around aa 273-407) of human Mesothelin (MSLN) protein (exact sequence is proprietary)
Host	Mouse
Clonality	Monoclonal
Isotype / Light Chain	IgG2b / Kappa
Mol. Weight of Antigen	40kDa (Mature form); 69kDa (Precursor)
Cellular Localization	Cell membrane, Golgi apparatus, Secreted
Species Reactivity	Human, Mouse, Rat
Positive Control	OVCAR-3, CAPAN-2 or HeLa cells. Lung Mesothelioma.

*Optimal dilution for a specific application should be determined.

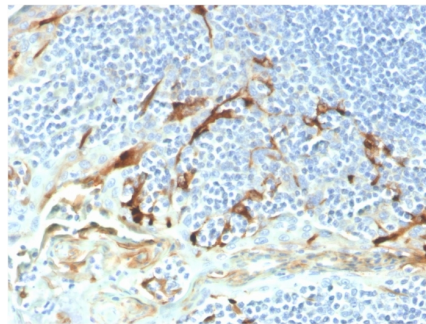
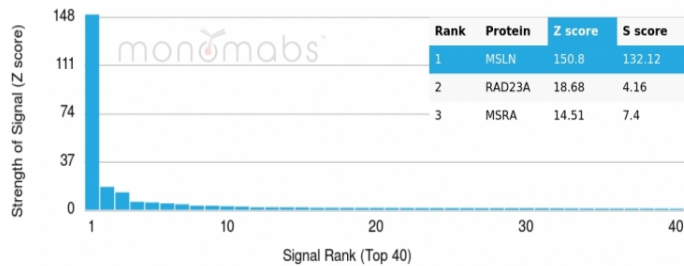
Product Images for Mesothelin (Mesothelial Marker) Antibody



Formalin-fixed, paraffin-embedded human lung stained with Biotin-conjugated Mesothelin Mouse Monoclonal Antibody (MSLN/2131). HIER: Tris/EDTA, pH9.0, 45min. 2°: HRP-polymer, 30min. DAB, 5min.



SDS-PAGE Analysis Purified Mesothelin Mouse Monoclonal Antibody (MSLN/2131) (unconjugated). Confirmation of Integrity and Purity of the Antibody.



Analysis of Protein Array containing more than 19,000 full-length human proteins using Mesothelin Mouse Monoclonal Antibody (MSLN/2131) (unconjugated). Z- and S-Score: The Z-score represents the strength of a signal that a monoclonal antibody (MAb) (in combination with a fluorescently-tagged anti-IgG secondary antibody) produces when binding to a particular protein on the HuProt™ array. Z-scores are described in units of standard deviations (SD's) above the mean value of all signals generated on that array. If targets on HuProt™ are arranged in descending order of the Z-score, the S-score is the difference (also in units of SD's) between the Z-score. S-score therefore represents the relative target specificity of a MAb to its intended target. A MAb is considered to be specific to its intended target, if the MAb has an S-score of at least 2.5. For example, if a MAb binds to protein X with a Z-score of 43 and to protein Y with a Z-score of 14, then the S-score for the binding of that MAb to protein X is equal to 29.

Formalin-fixed, paraffin-embedded human endometrial carcinoma stained with Biotin-conjugated Mesothelin Mouse Monoclonal Antibody (MSLN/2131). HIER: Tris/EDTA, pH9.0, 45min. 2°: HRP-polymer, 30min. DAB, 5min.

Specificity & Comments

Mesothelin is a 40kDa glycosyl-phosphatidylinositol-anchored glycoprotein cleaved from a 69kDa precursor protein. Mesothelin immunoreactivity is high in cancers of the ovary (serous papillary, endometrioid and undifferentiated) and pancreas, with less frequent staining seen in adenocarcinomas of the endometrium, lung and stomach/esophagus. Mesothelin is one of the most sensitive markers for mesothelioma.

Supplied As

Antibody Purified from Bioreactor Concentrate by Protein A/G and conjugated to various reporter molecules. Prepared in 10mM PBS with 0.05% BSA and 0.05% azide. Contact us if you require this Ab in a different format.

Storage and Stability

Antibody with azide - store at 2 to 8°C. Antibody without azide - store at -20 to -80°C. Antibody is stable for 24 months. Non-hazardous. No MSDS required.

Limitations and Warranty

This antibody is available for research use only and is not approved for use in diagnosis. There are no warranties, expressed or implied, which extend beyond this description. Company is not liable for any personal injury or economic loss resulting from this product.