

SCGN / Secretagogin Antibody

Mouse Monoclonal Antibody [Clone SCGN/7325]

Catalog No	Format	Size
10590-MSM5-P0	Purified Ab with BSA and Azide at 200ug/ml	20 ug
10590-MSM5-P1	Purified Ab with BSA and Azide at 200ug/ml	100 ug
10590-MSM5-P1ABX	Purified Ab WITHOUT BSA and Azide at 1.0mg/ml	100 ug

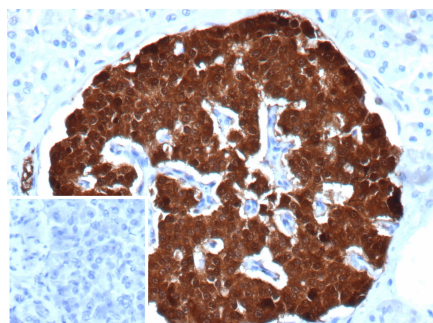
Applications	Tested Dillution	Note
Immunohistochemistry (IHC)	1-2ug/ml	30 min at RT. Staining of formalin-fixed tissues requires heating tissue sections in 10mM Tris with 1mM EDTA, pH 9.0, for 45 min at 95°C followed by cooling at RT for 20 minutes

Product Details

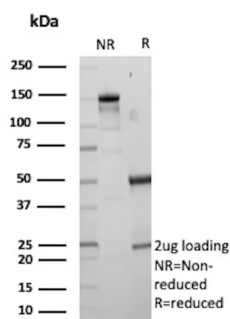
Clone	SCGN/7325
Gene Name	SCGN
Immunogen	Recombinant fragment (around aa100-276) of human SCGN protein (exact sequence is proprietary)
Host	Mouse
Clonality	Monoclonal
Isotype / Light Chain	IgG2 / Kappa
Mol. Weight of Antigen	32kDa
Cellular Localization	Cytoplasm, Secreted
Species Reactivity	Human
Positive Control	Human pancreas, brain or gastrointestinal tract.

*Optimal dilution for a specific application should be determined.

Product Images for SCGN / Secretagogin Antibody



Formalin-fixed, paraffin-embedded human pancreas stained with Secretagogin Mouse Monoclonal Antibody (SCGN/7325). Inset: PBS instead of primary antibody; secondary only negative control.



SDS-PAGE Analysis of Purified SCGN Mouse Monoclonal Antibody (SCGN/7325). Confirmation of Purity and Integrity of Antibody.

Specificity & Comments

SCGN, also known as Secretagogin, CALBL, setagin or SECRET, is a 276 amino acid cytoplasmic protein that contains six EF-hand domains and is related to the calcium-binding proteins Calretinin and Calbindin D28K. Expressed in a variety of tissues including stomach, thyroid, colon, brain and neuroendocrine cells, SCGN is thought to be involved in cell proliferation and KCl (potassium chloride)-mediated calcium flux events. Through its interaction with KCl and its subsequent ability to modulate calcium storage pools within the cell, SCGN may function to negatively control growth and differentiation rates and, thus, indirectly inhibit cell replication.

Supplied As

200ug/ml of Ab purified from Bioreactor Concentrate by Protein A/G. Prepared in 10mM PBS with 0.05% BSA & 0.05% azide. Also available WITHOUT BSA & azide at 1.0mg/ml.

Storage and Stability

Antibody with azide - store at 2 to 8°C. Antibody without azide - store at -20 to -80°C. Antibody is stable for 24 months. Non-hazardous. No MSDS required.

Research Areas

Neuroscience

Limitations and Warranty

This antibody is available for research use only and is not approved for use in diagnosis. There are no warranties, expressed or implied, which extend beyond this description. Company is not liable for any personal injury or economic loss resulting from this product.
