

## N-Cadherin / Cadherin-2 / CD325 (NCAD) Antibody

Mouse Monoclonal Antibody [Clone CDH2/9492]

Catalog No	Format	Size
1000-MSM20-P0	Purified Ab with BSA and Azide at 200ug/ml	20 ug
1000-MSM20-P1	Purified Ab with BSA and Azide at 200ug/ml	100 ug
1000-MSM20-P1ABX	Purified Ab WITHOUT BSA and Azide at 1.0mg/ml	100 ug

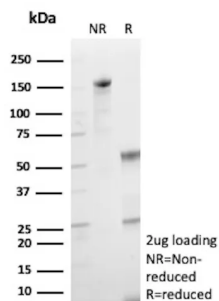
Applications	Tested Dillution	Note
Immunohistochemistry (IHC)	1-2ug/ml	30 min at RT. Staining of formalin-fixed tissues requires heating tissue sections in 10mM Tris with 1mM EDTA, pH 9.0, for 45 min at 95°C followed by cooling at RT for 20 minutes
Western Blot (WB)	2-4ug/ml	

### Product Details

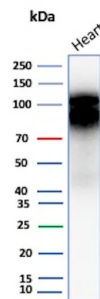
<b>Clone</b>	CDH2/9492
<b>Gene Name</b>	CDH2
<b>Immunogen</b>	Recombinant fragment (around aa400-600) of human CDH2 protein (exact sequence is proprietary)
<b>Host</b>	Mouse
<b>Clonality</b>	Monoclonal
<b>Isotype / Light Chain</b>	IgG2b / Kappa
<b>Mol. Weight of Antigen</b>	130-140kDa
<b>Cellular Localization</b>	Cell junction, Cell membrane, Cell surface, Sarcolemma
<b>Species Reactivity</b>	Human
<b>Positive Control</b>	HeLa or HUVEC cells. Human heart, pancreas or cerebral cortex. A549.

\*Optimal dilution for a specific application should be determined.

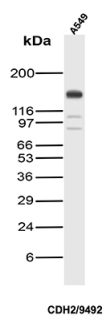
### Product Images for N-Cadherin / Cadherin-2 / CD325 (NCAD) Antibody



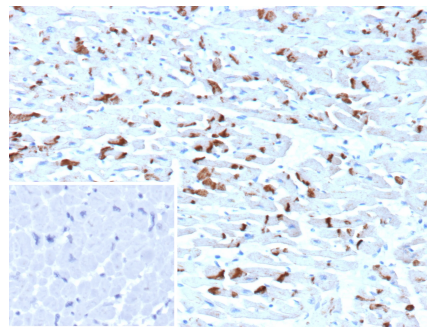
SDS-PAGE Analysis of Purified N-Cadherin Mouse Monoclonal Antibody (CDH2/9492). Confirmation of Purity and Integrity of Antibody.



Western Blot Analysis of human heart tissue lysate using N-Cadherin Mouse Monoclonal Antibody (CDH2/9492).



Western Blot Analysis of A549 lysate using N-Cadherin Mouse Monoclonal Antibody (CDH2/9492).



Formalin-fixed, paraffin-embedded human heart stained with N-Cadherin Mouse Monoclonal Antibody (CDH2/9492). Inset: PBS instead of primary antibody; secondary only negative control.

### Specificity & Comments

Recognizes a protein of ~140kDa, identified as N-Cadherin (NCAD), also known as CD325. NCAD is a member of the Cadherin superfamily, and consists of five extracellular repeats, a transmembrane domain and a cytoplasmic domain. CD325 deficient mice die at day 10 of gestation and embryos display major heart defects and malformed neural tubes and somites. Consistent with this, CD325 has been implicated in several aspects of cardiac development including the precardiac mesoderm, establishment of left-right symmetry and cardiac looping morphogenesis. Furthermore, CD325 is normally involved in inducing cell cycle arrest and its expression is frequently deregulated in cancer cells. Studies have linked N-cadherin to cancer metastasis by showing the aggressive tumor cells had preferentially turned on N-cadherin as opposed to E- or P-cadherin.

### Limitations and Warranty

This antibody is available for research use only and is not approved for use in diagnosis. There are no warranties, expressed or implied, which extend beyond this description. Company is not liable for any personal injury or economic loss resulting from this product.

### Supplied As

200ug/ml of Ab purified from Bioreactor Concentrate by Protein A/G. Prepared in 10mM PBS with 0.05% BSA & 0.05% azide. Also available WITHOUT BSA & azide at 1.0mg/ml.

### Storage and Stability

Antibody with azide - store at 2 to 8 °C. Antibody without azide - store at -20 to -80 °C. Antibody is stable for 24 months. Non-hazardous. No MSDS required.

### Research Areas

Cardiovascular, Developmental Biology, Mesenchymal Stem Cell Differentiation