

## GFAP (Astrocyte & Neural Stem Cell Marker) Antibody

Mouse Monoclonal Antibody [Clone GFAP/9424]

Catalog No	Format	Size
2670MSM43-P0	Purified Ab with BSA and Azide at 200ug/ml	20 ug
2670-MSM43-P1	Purified Ab with BSA and Azide at 200ug/ml	100 ug
2670-MSM43-P1ABX	Purified Ab WITHOUT BSA and Azide at 1.0mg/ml	100 ug

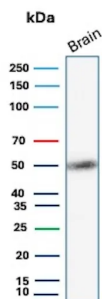
Applications	Tested Dillution	Note
Immunohistochemistry (IHC)	1-2ug/ml	30 min at RT. Staining of formalin-fixed tissues requires heating tissue sections in 10mM Tris with 1mM EDTA, pH 9.0, for 45 min at 95°C followed by cooling at RT for 20 minutes
Western Blot (WB)	2-4ug/ml	

### Product Details

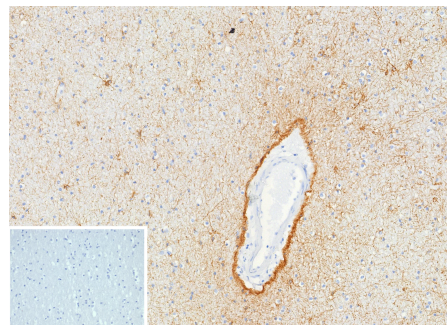
<b>Clone</b>	GFAP/9424
<b>Gene Name</b>	GFAP
<b>Immunogen</b>	Recombinant full-length human GFAP protein
<b>Host</b>	Mouse
<b>Clonality</b>	Monoclonal
<b>Isotype / Light Chain</b>	IgG1 / Kappa
<b>Mol. Weight of Antigen</b>	~50kDa
<b>Cellular Localization</b>	Cytoplasm
<b>Species Reactivity</b>	Human
<b>Positive Control</b>	Human brain or astrocytoma.

\*Optimal dilution for a specific application should be determined.

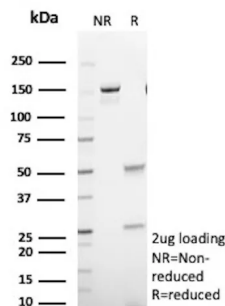
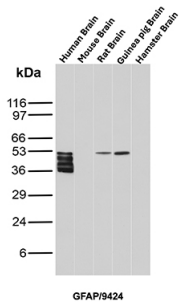
### Product Images for GFAP (Astrocyte & Neural Stem Cell Marker) Antibody



Western Blot Analysis of human brain tissue lysate using GFAP Mouse Monoclonal Antibody (GFAP/9424).



Formalin-fixed, paraffin-embedded human brain stained with GFAP Mouse Monoclonal Antibody (GFAP/9424). Inset: PBS instead of primary antibody; secondary only negative control.



Western blot analysis of Human Brain, Mouse Brain, Rat Brain, Guinea pig Brain and Hamster Brain tissue lysates using GFAP Mouse Monoclonal Antibody (GFAP/9424).

SDS-PAGE Analysis Purified GFAP Mouse Monoclonal Antibody (GFAP/9424). Confirmation of Purity and Integrity of Antibody.

### Specificity & Comments

This MAb recognizes a protein of ~50kDa which is identified as Glial Fibrillary Acidic Protein (GFAP). It shows no cross-reaction with other intermediate filament proteins. GFAP is specifically found in astroglia. GFAP is a very popular marker for localizing benign astrocyte and neoplastic cells of glial origin in the central nervous system. Antibody to GFAP is useful in differentiating primary gliomas from metastatic lesions in the brain and for documenting astrocytic differentiation in tumors outside the CNS.

### Supplied As

200ug/ml of Ab purified from Bioreactor Concentrate by Protein A/G. Prepared in 10mM PBS with 0.05% BSA & 0.05% azide. Also available WITHOUT BSA & azide at 1.0mg/ml.

### Storage and Stability

Antibody with azide - store at 2 to 8 °C. Antibody without azide - store at -20 to -80 °C. Antibody is stable for 24 months. Non-hazardous. No MSDS required.

### Research Areas

Cardiovascular, Endothelial Cell Marker, Neural Stem Cells, Neuroinflammation, Neuroscience, Signal Transduction

### Limitations and Warranty

This antibody is available for research use only and is not approved for use in diagnosis. There are no warranties, expressed or implied, which extend beyond this description. Company is not liable for any personal injury or economic loss resulting from this product.