

Cytokeratin (CAM5.2) (Epithelial Marker) Antibody

Mouse Monoclonal Antibody [Clone CAM5.2]

Catalog No	Format	Size
MSM62-13139-P0	Purified Ab with BSA and Azide at 200ug/ml	20 ug
MSM62-13139-P1	Purified Ab with BSA and Azide at 200ug/ml	100 ug
MSM62-13139-P1ABX	Purified Ab WITHOUT BSA and Azide at 1.0mg/ml	100 ug

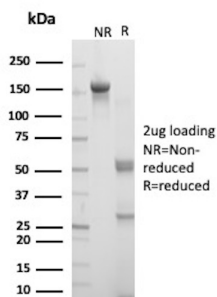
Applications	Tested Dillution	Note
Immunohistochemistry (IHC)	1-2ug/ml	30 min at RT. Staining of formalin-fixed tissues requires heating tissue sections in 10mM Tris with 1mM EDTA, pH 9.0, for 45 min at 95°C followed by cooling at RT for 20 minutes

Product Details

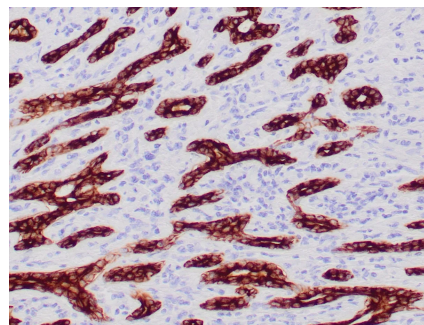
Clone	CAM5.2
Gene Name	
Immunogen	Hybridization of mouse P3/NS-1/1-Ag4-1 myeloma cells with spleen cells from BALB/c mice immunized with the human colorectal carcinoma cell line HT29.
Host	Mouse
Clonality	Monoclonal
Isotype / Light Chain	IgG2a / Kappa
Cellular Localization	Cytoplasm
Species Reactivity	Human
Positive Control	Human colon, lung, prostate or breast.

*Optimal dilution for a specific application should be determined.

Product Images for Cytokeratin (CAM5.2) (Epithelial Marker) Antibody



SDS-PAGE Analysis of Purified Keratin, type II cytoskeletal 1b [CAM5.2] Monoclonal Antibody (CAM5.2). Confirmation of Purity and Integrity of Antibody.



Formalin-fixed, paraffin-embedded human breast carcinoma stained with Cytokeratin Mouse Monoclonal Antibody (CAM5.2). HIER: Tris/EDTA, pH9.0, 45min. 2°: HRP-polymer, 30min. DAB, 5min.

Specificity & Comments

Cytokeratin CAM5.2 antibody has a primary reactivity with human keratin proteins that correspond to Moll's peptides #7 and #8, MW 48 and 52 kDa, respectively. Cytokeratin 7 and 8 are present in secretory epithelia of normal human tissue but not on stratified squamous epithelium. Cytokeratin LMW CAM5.2 antibody stains most epithelial-derived tissue, including liver, renal tubular epithelium, and hepatocellular and renal cell carcinomas. Anti-Cytokeratin (CAM 5.2) may not react with some squamous cell carcinomas.

Supplied As

200ug/ml of Ab Purified from Bioreactor Concentrate by Protein A/G. Prepared in 10mM PBS with 0.05% BSA & 0.05% azide. Also available WITHOUT BSA & azide at 1.0mg/ml.

Storage and Stability

Antibody with azide - store at 2 to 8°C. Antibody without azide - store at -20 to -80°C. Antibody is stable for 24 months. Non-hazardous. No MSDS required.

Research Areas

Autophagy, Developmental Biology

Limitations and Warranty

This antibody is available for research use only and is not approved for use in diagnosis. There are no warranties, expressed or implied, which extend beyond this description. Company is not liable for any personal injury or economic loss resulting from this product.
