

Podoplanin (PDPN) (Lymphatic Endothelial & Mesothelial Marker) Antibody

Mouse Monoclonal Antibody [Clone D2-40]

| Catalog No | Format | Size |
|-------------------|---|--------|
| 10630-MSM16-P0 | Purified Ab with BSA and Azide at 200ug/ml | 20 ug |
| 10630-MSM16-P1 | Purified Ab with BSA and Azide at 200ug/ml | 100 ug |
| 10630-MSM16-P1ABX | Purified Ab WITHOUT BSA and Azide at 1.0mg/ml | 100 ug |

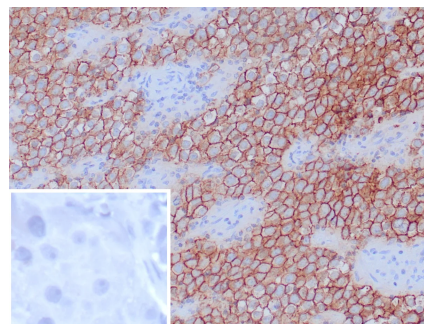
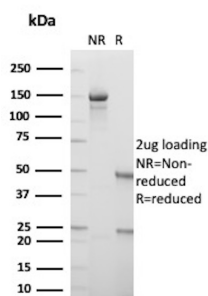
| Applications | Tested Dillution | Note |
|----------------------------|------------------|---|
| Immunohistochemistry (IHC) | 1-2ug/ml | 30 min at RT. Staining of formalin-fixed tissues requires heating tissue sections in 10mM Tris with 1mM EDTA, pH 9.0, for 45 min at 95°C followed by cooling at RT for 20 minutes |

Product Details

| | |
|-------------------------------|---|
| Clone | D2-40 |
| Gene Name | PDPN |
| Immunogen | Resected tissue from dysgerminoma of the ovary. |
| Host | Mouse |
| Clonality | Monoclonal |
| Isotype / Light Chain | IgG1 / Kappa |
| Mol. Weight of Antigen | 38-43kDa |
| Cellular Localization | Apical cell membrane, Basolateral cell membrane, Cell projection, Cytoplasm, Cytosol, Filopodium membrane, Invadopodium, Lamellipodium membrane, Membrane, Membrane raft, Microvillus membrane, Ruffle membrane |
| Species Reactivity | Human, Mouse, Rat |
| Positive Control | Human tonsil, lymph node or lymphangioma. |

*Optimal dilution for a specific application should be determined.

Product Images for Podoplanin (PDPN) (Lymphatic Endothelial & Mesothelial Marker) Antibody



SDS-PAGE Analysis of Purified Podoplanin Mouse Monoclonal Antibody (D2-40). Confirmation of Purity and Integrity of Antibody.

Formalin-fixed, paraffin-embedded human tonsil stained with Podoplanin Mouse Monoclonal Antibody (D2-40). Inset: PBS instead of primary antibody; secondary only negative control.

Specificity & Comments

Podoplanin is a transmembrane mucoprotein (38 kDa) recognized by the D2-40 monoclonal antibody. Podoplanin is specifically expressed in the endothelium of lymphatic capillaries but not in the blood vasculature. In normal skin and kidney, podoplanin is co-localized with VEGFR3/FLT4, another marker for lymphatic endothelial cells. Podoplanin is selectively expressed in lymphatic endothelium as well as Lymphangiomas, Kaposi's Sarcomas and in subset Angiosarcomas with probable lymphatic differentiation. Podoplanin has also been shown to be expressed in Epithelioid Mesotheliomas, Hemangioblastomas and Seminomas.

Limitations and Warranty

This antibody is available for research use only and is not approved for use in diagnosis. There are no warranties, expressed or implied, which extend beyond this description. Company is not liable for any personal injury or economic loss resulting from this product.

Supplied As

200ug/ml of Ab Purified from Bioreactor Concentrate by Protein A/G. Prepared in 10mM PBS with 0.05% BSA & 0.05% azide. Also available WITHOUT BSA & azide at 1.0mg/ml.

Storage and Stability

Antibody with azide - store at 2 to 8°C. Antibody without azide - store at -20 to -80°C. Antibody is stable for 24 months. Non-hazardous. No MSDS required.

Research Areas

Angiogenesis, Dendritic Cell Marker, Endothelial Cell Marker
