

Recombinant BAP1 (BRCA1 Associated Protein 1) Antibody

Rabbit Monoclonal Antibody [Clone BAP1/9795R]

Catalog No	Format	Size
8314-RBM29-P0	Purified Ab with BSA and Azide at 200ug/ml	20 ug
8314-RBM29-P1	Purified Ab with BSA and Azide at 200ug/ml	100 ug
8314-RBM29-P1ABX	Purified Ab WITHOUT BSA and Azide at 1.0mg/ml	100 ug

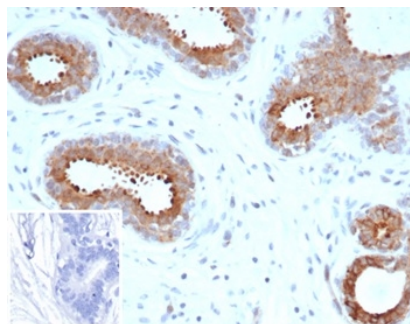
Applications	Tested Dillution	Note
Immunohistochemistry (IHC)	1-2ug/ml	30 min at RT. Staining of formalin-fixed tissues requires heating tissue sections in 10mM Tris with 1mM EDTA, pH 9.0, for 45 min at 95°C followed by cooling at RT for 20 minutes

Product Details

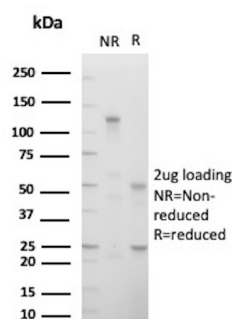
Clone	BAP1/9795R
Gene Name	BAP1
Immunogen	Recombinant fragment (around aa400-729) of human BAP1 protein (exact sequence is proprietary)
Host	Rabbit
Clonality	Monoclonal
Isotype / Light Chain	IgG / Kappa
Mol. Weight of Antigen	91kDa
Cellular Localization	Cytoplasm, Nucleus
Species Reactivity	Human
Positive Control	Human breast or malignant mesothelioma.

**Optimal dilution for a specific application should be determined.*

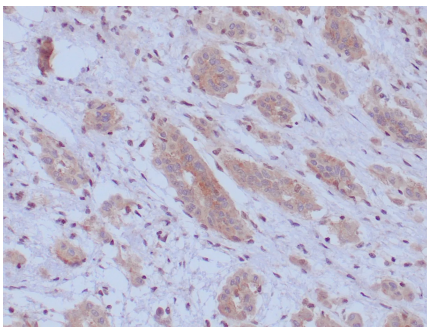
Product Images for Recombinant BAP1 (BRCA1 Associated Protein 1) Antibody



Formalin-fixed, paraffin-embedded human breast carcinoma stained with BAP1 Recombinant Rabbit Monoclonal Antibody (BAP1/9795R). Inset: PBS instead of primary, secondary antibody control.



SDS-PAGE Analysis of Purified Ubiquitin carboxyl-terminal hydrolase BAP1 Recombinant Rabbit Monoclonal Antibody (BAP1/9795R). Confirmation of Purity and Integrity of Antibody.



Formalin-fixed, paraffin-embedded malignant mesothelioma stained with BAP1 Recombinant Rabbit Monoclonal Antibody (BAP1/9795R). HIER: Tris/EDTA, pH9.0, 45min. 2°: HRP-polymer, 30min. DAB, 5min.

Specificity & Comments

The BAP1 gene belongs to the ubiquitin C-terminal hydrolase subfamily of de-ubiquitination enzymes that are involved in the removal of ubiquitin from proteins. The encoded enzyme binds to the breast cancer type 1 susceptibility protein (BRCA1) via the RING finger domain of the latter and acts as a tumor suppressor. In addition, the enzyme may be involved in regulation of transcription, regulation of cell cycle and growth, response to DNA damage and chromatin dynamics. Germ line mutations in this gene may be associated with tumor predisposition syndrome (TPDS), which involves increased risk of cancers including malignant mesothelioma, Uveal melanoma and cutaneous melanoma.

Limitations and Warranty

This antibody is available for research use only and is not approved for use in diagnosis. There are no warranties, expressed or implied, which extend beyond this description. Company is not liable for any personal injury or economic loss resulting from this product.

Supplied As

200ug/ml of Ab purified from Bioreactor Concentrate by Protein A/G. Prepared in 10mM PBS with 0.05% BSA & 0.05% azide. Also available WITHOUT BSA & azide at 1.0mg/ml.

Storage and Stability

Antibody with azide - store at 2 to 8 °C. Antibody without azide - store at -20 to -80 °C. Antibody is stable for 24 months. Non-hazardous. No MSDS required.

Research Areas

Mesenchymal Stem Cell Differentiation, Nuclear Marker
