

## Recombinant Chromogranin A / CHGA (Neuroendocrine Marker) Antibody

Mouse Monoclonal Antibody [Clone rCHGA/9612]

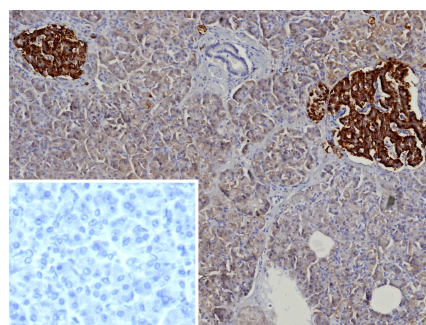
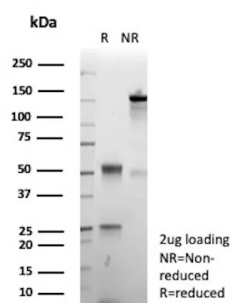
Catalog No	Format	Size
1113-MSM31-P0	Purified Ab with BSA and Azide	200ug/ml
1113-MSM31-P1	Purified Ab with BSA and Azide	200ug/ml
1113-MSM31-P1ABX	Purified Ab WITHOUT BSA and Azide	1.0mg/ml

Applications	Tested Dillution
Immunohistochemistry (IHC)	1-2ug/ml

Product Details	
Clone	rCHGA/9612
Gene Name	CHGA
Immunogen	Recombinant full-length human CHGA protein.
Host	Mouse
Clonality	Monoclonal
Isotype / Light Chain	IgG2b / Kappa
Mol. Weight of Antigen	68-75kDa
Cellular Localization	Cytoplasmic vesicle, Neuronal dense core vesicle, Secreted, Secretory vesicle
Species Reactivity	Human
Positive Control	Adrenal gland, thyroid, bowel, pancreas or pheochromocytoma. PC12 cells.

*\*Optimal dilution for a specific application should be determined.*

### Product Images for Recombinant Chromogranin A / CHGA (Neuroendocrine Marker) Antibody



SDS-PAGE Analysis of Purified Chromogranin A Recombinant Mouse Monoclonal Antibody (rCHGA/9612). Confirmation of Purity and Integrity of Antibody.

Formalin-fixed, paraffin-embedded human pancreas stained with Chromogranin A Recombinant Mouse Monoclonal Antibody (rCHGA/9612). Inset: PBS instead of primary antibody; secondary only negative control.

### Specificity & Comments

Chromogranin A is present in neuroendocrine cells throughout the body, including the neuroendocrine cells of the large and small intestine, adrenal medulla and pancreatic islets. It is an excellent marker for carcinoid tumors, pheochromocytomas, paragangliomas, and other neuroendocrine tumors. Co-expression of chromogranin A and neuron specific enolase (NSE) is common in neuroendocrine neoplasms. Reportedly, co-expression of certain keratins and chromogranin indicates neuroendocrine lineage. The presence of strong anti-chromogranin staining and absence of anti-keratin staining should raise the possibility of paraganglioma. The co-expression of chromogranin and NSE is typical of neuroendocrine neoplasms. Most pituitary adenomas and prolactinomas readily express chromogranin.

---

### Research Areas

Cardiovascular, Immunology

---

### Known Applications & Suggested Dilutions

Immunohistochemistry (Formalin-fixed) (0.25-0.5ug/ml for 30 minutes at RT)(Staining of formalin-fixed tissues requires heating tissue sections in 10mM Tris with 1mM EDTA, pH 9.0, for 45 min at 95&degC followed by cooling at RT for 20 minutes) | Optimal dilution for a specific application should be determined.

---

### Limitations and Warranty

This antibody is available for research use only and is not approved for use in diagnosis.

There are no warranties, expressed or implied, which extend beyond this description. Company is not liable for any personal injury or economic loss resulting from this product.

---

### Supplied As

200ug/ml of Ab produced in CHO cell mammalian-based expression system. Prepared in 10mM PBS with 0.05% BSA & 0.05% azide. Also available WITHOUT BSA & azide at 1.0mg/ml.

---

### Storage and Stability

Antibody with azide - store at 2 to 8°C. Antibody without azide - store at -20 to -80°C. Antibody is stable for 24 months. Non-hazardous. No MSDS required.

---