

## Cytokeratin 5/6 (Basal, Myoepithelial & Mesothelial Cell Marker) Antibody

Mouse Monoclonal Antibody [Clone KRT5.6/9104]

Catalog No	Format	Size
MSM4-9104-P0	Purified Ab with BSA and Azide at 200ug/ml	20 ug
MSM4-9104-P1	Purified Ab with BSA and Azide at 200ug/ml	100 ug
MSM4-9104-P1ABX	Purified Ab WITHOUT BSA and Azide at 1.0mg/ml	100 ug

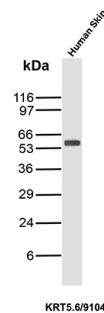
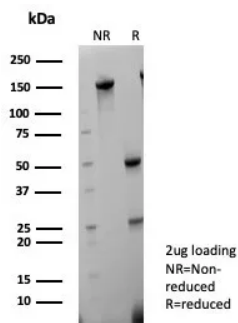
Applications	Tested Dillution	Note
Immunohistochemistry (IHC)	1-2ug/ml	30 min at RT. Staining of formalin-fixed tissues requires heating tissue sections in 10mM Tris with 1mM EDTA, pH 9.0, for 45 min at 95°C followed by cooling at RT for 20 minutes
Western Blot (WB)	2-4ug/ml	

### Product Details

<b>Clone</b>	KRT5.6/9104
<b>Gene Name</b>	KRT5
<b>Immunogen</b>	Recombinant fragments of human Cytokeratin 5 (KRT5) and Cytokeratin 6 proteins (exact sequences are proprietary)
<b>Host</b>	Mouse
<b>Clonality</b>	Monoclonal
<b>Isotype / Light Chain</b>	IgG1 / Kappa
<b>Mol. Weight of Antigen</b>	58kDa (KRT5); 56kDa (KRT6)
<b>Cellular Localization</b>	Cytoplasm.
<b>Species Reactivity</b>	Human
<b>Positive Control</b>	Human prostate or skin tissue.

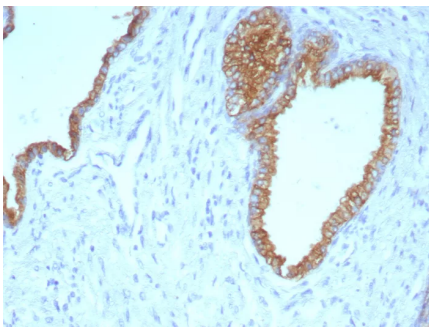
\*Optimal dilution for a specific application should be determined.

### Product Images for Cytokeratin 5/6 (Basal, Myoepithelial & Mesothelial Cell Marker) Antibody



SDS-PAGE Analysis of Purified Cytokeratin 5/6 Mouse Monoclonal Antibody (KRT5.6/9104). Confirmation of Purity and Integrity of Antibody.

Western Blot Analysis of human skin tissue lysate using Cytokeratin 5/6 Mouse Monoclonal Antibody (KRT5.6/9104).



Formalin-fixed, paraffin-embedded human prostate carcinoma stained with Cytokeratin 5/6 Mouse Monoclonal Antibody (KRT5.6/9104). HIER: Tris/EDTA, pH9.0, 45min. 2°C: HRP-polymer, 30min. DAB, 5min.

---

### Specificity & Comments

Cytokeratin 5 is a basic protein that is closely related to cytokeratin 6. They share similar tissue distribution and are found in various proportions in many non-keratinizing stratified squamous epithelia eg. tongue mucosa, as well as in basal epithelia of trachea, basal cells of epidermis, hair follicles, sebaceous and sweat glands of skin, luminal cells of the mammary gland, basal cells of prostate, urothelium, vagina and endocervical mucosa. Cytokeratins 5 and 6 are also expressed in basal cell epitheliomas, squamous cell carcinomas of skin, tongue, epiglottis and of the rectal-anal region. Cytokeratin 5&6 is a useful aid for classification of epithelioid mesotheliomas.

---

### Limitations and Warranty

This antibody is available for research use only and is not approved for use in diagnosis. There are no warranties, expressed or implied, which extend beyond this description. Company is not liable for any personal injury or economic loss resulting from this product.

---

### Supplied As

200ug/ml of Ab purified from Bioreactor Concentrate by Protein A/G. Prepared in 10mM PBS with 0.05% BSA & 0.05% azide. Also available WITHOUT BSA & azide at 1.0mg/ml.

---

### Storage and Stability

Antibody with azide - store at 2 to 8°C. Antibody without azide - store at -20 to -80°C. Antibody is stable for 24 months. Non-hazardous. No MSDS required.

---