

## Recombinant SLC7A11 / xCT Antibody

Rabbit Monoclonal Antibody [Clone SLC7A11/9136R]

Catalog No	Format	Size
23657-RBM3-P0	Purified Ab with BSA and Azide at 200ug/ml	20 ug
23657-RBM3-P1	Purified Ab with BSA and Azide at 200ug/ml	100 ug
23657-RBM3-P1ABX	Purified Ab WITHOUT BSA or Azide at 1.0mg/ml	100 ug

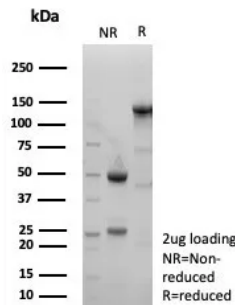
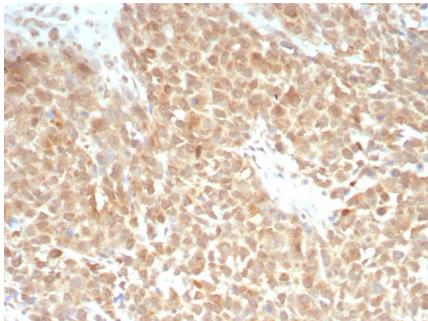
Applications	Tested Dillution	Note
Immunohistochemistry (IHC)	1-2ug/ml	30 min at RT. Staining of formalin-fixed tissues requires heating tissue sections in 10mM Tris with 1mM EDTA, pH 9.0, for 45 min at 95°C followed by cooling at RT for 20 minutes
Western Blot (WB)	2-4ug/ml	

### Product Details

<b>Clone</b>	SLC7A11/9136R
<b>Immunogen</b>	Recombinant fragment (around aa1-41) of the human SLC7A11 protein (exact sequence is proprietary)
<b>Host</b>	Rabbit
<b>Clonality</b>	Monoclonal
<b>Isotype / Light Chain</b>	IgG / Kappa
<b>Mol. Weight of Antigen</b>	55.42kDa
<b>Cellular Localization</b>	Cell membrane, Cell projection, Microvillus membrane
<b>Species Reactivity</b>	Human
<b>Positive Control</b>	Human small intestine tissue.

\*Optimal dilution for a specific application should be determined.

### Product Images for Recombinant SLC7A11 / xCT Antibody



Formalin-fixed, paraffin-embedded human triple negative breast cancer stained with SLC7A11 / xCT Recombinant Rabbit Monoclonal Antibody (SLC7A11/9136R). Inset: PBS instead of primary antibody; secondary only negative control.

SDS-PAGE Analysis of Purified xCT Recombinant Rabbit Monoclonal Antibody (SLC7A11/9136R). Confirmation of Purity and Integrity of Antibody.

### **Specificity & Comments**

xCT, also known as SLC7A11 (solute carrier family 7, (cationic amino acid transporter, y<sup>+</sup> system) member 11) or CCBR1, is a 501 amino acid multi-pass membrane protein that belongs to the polyamine-organocation superfamily of amino acid transporters. Existing as a disulfide-linked heterodimer with CD98, xCT functions as a member of a heteromeric Na<sup>+</sup>-independent anionic amino acid transport system that specifically facilitates the exchange of anionic amino acids for anionic forms of cystine and glutamate, thereby mediating the formation of glutathione within the cell. Due to its involvement in amino acid transport, xCT is associated with the pathogenesis of glioma-induced neurodegeneration and brain edema, as well as pancreatic cancer. The gene encoding xCT maps to human chromosome 4, which encodes nearly 6% of the human genome and has the largest gene deserts (regions of the genome with no protein encoding genes) of all of the human chromosomes.

---

### **Limitations and Warranty**

This antibody is available for research use only and is not approved for use in diagnosis. There are no warranties, expressed or implied, which extend beyond this description. Company is not liable for any personal injury or economic loss resulting from this product.

---

### **Supplied As**

200ug/ml of Ab produced in a mammalian-based expression system. Prepared in 10mM PBS with 0.05% BSA & 0.05% azide. Also available WITHOUT BSA & azide at 1.0mg/ml.

---

### **Storage and Stability**

Antibody with azide - store at 2 to 8 °C. Antibody without azide - store at -20 to -80 °C. Antibody is stable for 24 months. Non-hazardous. No MSDS required.

---