

## Pancreatic lipase / PNLIP Antibody

Mouse Monoclonal Antibody [Clone PNLIP/9041]

Catalog No	Format	Size
5406-MSM11-P0	Purified Ab with BSA and Azide at 200ug/ml	20 ug
5406-MSM11-P1	Purified Ab with BSA and Azide at 200ug/ml	100 ug
5406-MSM11-P1ABX	Purified Ab WITHOUT BSA and Azide at 1.0mg/ml	100 ug

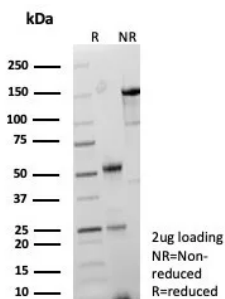
Applications	Tested Dillution	Note
Immunohistochemistry (IHC)	1-2ug/ml	30 min at RT. Staining of formalin-fixed tissues requires heating tissue sections in 10mM Tris with 1mM EDTA, pH 9.0, for 45 min at 95°C followed by cooling at RT for 20 minutes
Western Blot (WB)	2-4ug/ml	

### Product Details

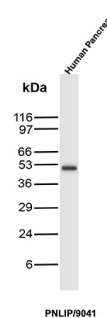
<b>Clone</b>	PNLIP/9041
<b>Gene Name</b>	PNLIP
<b>Immunogen</b>	Recombinant fragment (around aa 1-200) of human PNLIP protein (exact sequence is proprietary)
<b>Host</b>	Mouse
<b>Clonality</b>	Monoclonal
<b>Isotype / Light Chain</b>	IgG2b / Kappa
<b>Mol. Weight of Antigen</b>	51kDa
<b>Cellular Localization</b>	Secreted.
<b>Species Reactivity</b>	Human
<b>Positive Control</b>	Human pancreas.

\*Optimal dilution for a specific application should be determined.

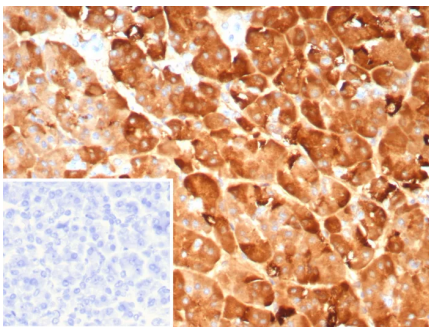
### Product Images for Pancreatic lipase / PNLIP Antibody



SDS-PAGE Analysis of Purified Pancreatic lipase Mouse Monoclonal Antibody (PNLIP/9041). Confirmation of Purity and Integrity of Antibody.



Western Blot Analysis of human pancreas tissue lysate using PNLIP Mouse Monoclonal Antibody (PNLIP/9041).



Formalin-fixed, paraffin-embedded human pancreas stained with Pancreatic lipase Mouse Monoclonal Antibody (PNLIP/9041). Inset: PBS instead of primary antibody; secondary only negative control.

### Specificity & Comments

The lipase gene family belongs to one of the most robust genetic superfamilies found in living organisms, which includes esterases and thioesterases. Members of the AB hydrolase subfamily include hepatic lipase (HL), endothelial lipase (EL), lipoprotein lipase (LPL), Pancreatic Lipase (PL), gastric lipase (GL) and LCAT. These family members play a crucial role in the metabolism of lipids. Pancreatic Lipase, also designated pancreatic triacylglycerol acyl hydrolase, is important for dietary fat absorption as it hydrolyses triglycerides into diglycerides, monoglycerides and free fatty acids.

### Supplied As

200ug/ml of Ab purified from Bioreactor Concentrate by Protein A/G. Prepared in 10mM PBS with 0.05% BSA & 0.05% azide. Also available WITHOUT BSA & azide at 1.0mg/ml.

### Storage and Stability

Antibody with azide - store at 2 to 8°C. Antibody without azide - store at -20 to -80°C. Antibody is stable for 24 months. Non-hazardous. No MSDS required.

### Research Areas

Cardiovascular

### Limitations and Warranty

This antibody is available for research use only and is not approved for use in diagnosis. There are no warranties, expressed or implied, which extend beyond this description. Company is not liable for any personal injury or economic loss resulting from this product.