

## Recombinant CD171 / NCAM-L1 (L1 Cell Adhesion Molecule) Antibody

Mouse Monoclonal Antibody [Clone rL1CAM/9163]

Catalog No	Format	Size
3897-MSM8-P0	Purified Ab with BSA and Azide at 200ug/ml	20 ug
3897-MSM8-P1	Purified Ab with BSA and Azide at 200ug/ml	100 ug
3897-MSM8-P1ABX	Purified Ab WITHOUT BSA and Azide at 1.0mg/ml	100 ug

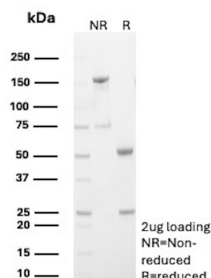
Applications	Tested Dillution	Note
Immunohistochemistry (IHC)	1-2ug/ml	30 min at RT. Staining of formalin-fixed tissues requires heating tissue sections in 10mM Tris with 1mM EDTA, pH 9.0, for 45 min at 95°C followed by cooling at RT for 20 minutes

### Product Details

Clone	rL1CAM/9163
Gene Name	L1CAM
Immunogen	Recombinant full-length human L1CAM protein
Host	Mouse
Clonality	Monoclonal
Isotype / Light Chain	IgG2b / Kappa
Mol. Weight of Antigen	full-length isoforms: 140/180/220kDa; proteolytically cleaved form:85 kDa
Cellular Localization	Cytoplasm. Cell surface.
Species Reactivity	Human
Positive Control	Human brain.

\*Optimal dilution for a specific application should be determined.

### Product Images for Recombinant CD171 / NCAM-L1 (L1 Cell Adhesion Molecule) Antibody



SDS-PAGE Analysis of Purified Neural cell adhesion molecule L1 Recombinant Mouse Monoclonal Antibody (rL1CAM/9163). Confirmation of Purity and Integrity of Antibody.

### Specificity & Comments

L1 (L1 cell adhesion molecule) also known as CAML1, CD171, and HSAS is an adhesion molecule which plays an important role in the nervous system development, including neuronal migration and differentiation. Mutations in the gene cause three X-linked neurological syndromes known by the acronym CRASH (corpus callosum hypoplasia, retardation, aphasia, spastic paraplegia and hydrocephalus). This mouse monoclonal antibody recognizes the sequence immediately NH2-terminal to the tyrosine-based motif and binds L1 only when Y1176 is dephosphorylated. Phosphorylation of either T1172 or Y1176 strongly inhibits binding of 74-5H7 to the L1 cytoplasmic domain.

### Supplied As

200ug/ml of Ab purified from Bioreactor Concentrate by Protein A/G. Prepared in 10mM PBS with 0.05% BSA & 0.05% azide. Also available WITHOUT BSA & azide at 1.0mg/ml.

### Storage and Stability

Antibody with azide - store at 2 to 8°C. Antibody without azide - store at -20 to -80°C. Antibody is stable for 24 months. Non-hazardous. No MSDS required.

### Research Areas

Cardiovascular, Developmental Biology, Neuroscience

### Limitations and Warranty

This antibody is available for research use only and is not approved for use in diagnosis. There are no warranties, expressed or implied, which extend beyond this description. Company is not liable for any personal injury or economic loss resulting from this product.