

CD161 / KLRB1 (Killer cell lectin like receptor B1) Antibody

Mouse Monoclonal Antibody [Clone KLRB1/8910]

Catalog No	Format	Size
3820-MSM1-P0	Purified Ab with BSA and Azide at 200ug/ml	20 ug
3820-MSM1-P1	Purified Ab with BSA and Azide at 200ug/ml	100 ug
3820-MSM1-P1ABX	Purified Ab WITHOUT BSA and Azide at 1.0mg/ml	100 ug

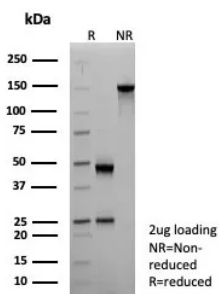
Applications	Tested Dillution	Note
Immunohistochemistry (IHC)	1-2ug/ml	30 min at RT. Staining of formalin-fixed tissues requires heating tissue sections in 10mM Tris with 1mM EDTA, pH 9.0, for 45 min at 95°C followed by cooling at RT for 20 minutes
Western Blot (WB)	2-4ug/ml	

Product Details

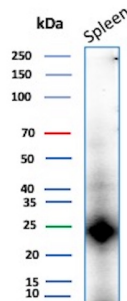
Clone	KLRB1/8910
Gene Name	KLRB1
Immunogen	Recombinant fragment (around aa1-225) of human KLRB1 protein (exact sequence is proprietary)
Host	Mouse
Clonality	Monoclonal
Isotype / Light Chain	IgG1 / Kappa
Mol. Weight of Antigen	25kDa
Cellular Localization	Membrane. Cytoplasm.
Species Reactivity	Human
Positive Control	Human prostate kidney, Spleen or thyroid cancer tissue.

*Optimal dilution for a specific application should be determined.

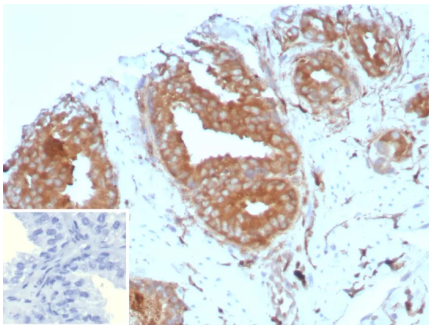
Product Images for CD161 / KLRB1 (Killer cell lectin like receptor B1) Antibody



SDS-PAGE Analysis of Purified CD161 Mouse Monoclonal Antibody (KLRB1/8910). Confirmation of Purity and Integrity of Antibody.



Western Blot Analysis of human Spleen tissue lysate using CD161 Mouse Monoclonal Antibody (KLRB1/8910).



Formalin-fixed, paraffin-embedded human prostate stained with CD161 Mouse Monoclonal Antibody (KLRB1/8910). Inset: PBS instead of primary antibody; secondary only negative control.

Specificity & Comments

Natural killer (NK) and T cells express a superfamily of proteins with structural features of C-type lectins. T cells bearing natural killer receptors (NKR) such as CD94 and CD161 are present in psoriasis. CD161 mediates NK cell activation and functions as an activating receptor. CD161 is a prototypic marker of NK cells, although it is also found on a subset of CD8+ T cells. The expression of NK receptors on CD8+ T cells can be considered a marker of cytotoxic effector T cells that are expanded in vivo after antigenic activation leading to extensive proliferation. The transcription, mRNA accumulation, and surface expression of CD161, a molecule involved in triggering cytotoxicity, is specifically upregulated by IL-12.

Limitations and Warranty

This antibody is available for research use only and is not approved for use in diagnosis. There are no warranties, expressed or implied, which extend beyond this description. Company is not liable for any personal injury or economic loss resulting from this product.

Supplied As

200ug/ml of Ab purified from Bioreactor Concentrate by Protein A/G. Prepared in 10mM PBS with 0.05% BSA & 0.05% azide. Also available WITHOUT BSA & azide at 1.0mg/ml.

Storage and Stability

Antibody with azide - store at 2 to 8°C. Antibody without azide - store at -20 to -80°C. Antibody is stable for 24 months. Non-hazardous. No MSDS required.

Research Areas

Hematopoietic Stem Cells, Immunology
