

## Colipase / CLPS Antibody

Mouse Monoclonal Antibody [Clone CLPS/9021]

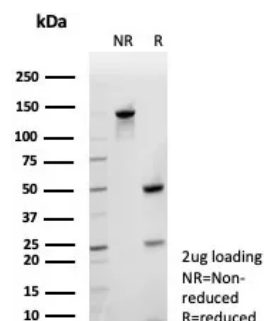
Catalog No	Format	Size
1208-MSM1-P0	Purified Ab with BSA and Azide	200ug/ml
1208-MSM1-P1	Purified Ab with BSA and Azide	200ug/ml
1208-MSM1-P1ABX	Purified Ab WITHOUT BSA and Azide	1.0mg/ml

Applications	Tested Dillution
Immunohistochemistry (IHC)	1-2ug/ml
Western Blot (WB)	2-4ug/ml

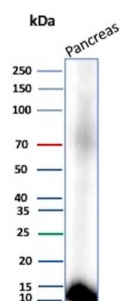
Product Details	
Clone	CLPS/9021
Gene Name	CLPS
Immunogen	Recombinant fragment (around aa1-112) of human CLPS protein (exact sequence is proprietary)
Host	Mouse
Clonality	Monoclonal
Isotype / Light Chain	IgG1 / Kappa
Mol. Weight of Antigen	12kDa
Cellular Localization	Secreted.
Species Reactivity	Human
Positive Control	breast cancer or esophagus cancer. Human pancreas

*\*Optimal dilution for a specific application should be determined.*

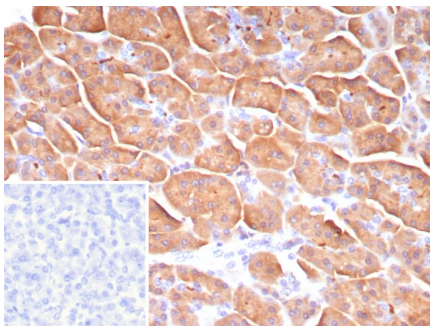
### Product Images for Colipase / CLPS Antibody



SDS-PAGE Analysis of Purified Colipase / CLPS Mouse Monoclonal Antibody (CLPS/9021). Confirmation of Purity and Integrity of Antibody.



Western Blot Analysis of human Pancreas tissue lysate using CLPS Mouse Monoclonal Antibody (CLPS/9021).



Formalin-fixed, paraffin-embedded human pancreas stained with Colipase / CLPS Mouse Monoclonal Antibody (CLPS/9021). Inset: PBS instead of primary antibody; secondary only negative control.

### Specificity & Comments

The lipase gene family belongs to one of the most robust genetic superfamilies found in living organisms, which includes esterases and thioesterases. Members of the AB hydrolase subfamily include Hepatic Lipase (HL), Endothelial Lipase (EL), Lipoprotein Lipase (LPL), Pancreatic Lipase (PL), Gastric Lipase (GL) and LCAT. These family members play a crucial role in the metabolism of lipids. Pancreatic lipase, also designated pancreatic triacylglycerol acyl hydrolase, is important for dietary fat absorption as it hydrolyses triglycerides into diglycerides, monoglycerides and free fatty acids. Colipase, also known as CLPS or pancreatic colipase preproprotein, is a 112 amino acid secreted protein that functions as a cofactor of pancreatic lipase. Necessary for dietary lipid hydrolysis and localizing to pancreatic acinar cells, colipase allows pancreatic lipase to anchor itself to the lipid-water interface of lipid micelles, thereby preventing intestinal bile salts from washing it off.

### Research Areas

Cardiovascular

### Known Applications & Suggested Dilutions

Immunohistochemistry (Formalin-fixed) (1-2ug/ml for 30 minutes at RT),(Staining of formalin-fixed tissues requires heating tissue sections in 10mM Tris with 1mM EDTA, pH 9.0, for 45 min at 95&degC followed by cooling at RT for 20 minutes),Optimal dilution for a specific application should be determined.

### Limitations and Warranty

This antibody is available for research use only and is not approved for use in diagnosis.

There are no warranties, expressed or implied, which extend beyond this description. Company is not liable for any personal injury or economic loss resulting from this product.

### Supplied As

200ug/ml of Ab purified from Bioreactor Concentrate by Protein A/G. Prepared in 10mM PBS with 0.05% BSA & 0.05% azide. Also available WITHOUT BSA & azide at 1.0mg/ml.

### Storage and Stability

Antibody with azide - store at 2 to 8°C. Antibody without azide - store at -20 to -80°C.Antibody is stable for 24 months. Non-hazardous. No MSDS required.