

Recombinant CD147 / BSG / EMMPRIN / Neurothelin Antibody

Rabbit Monoclonal Antibody [Clone BSG/9290R]

Catalog No	Format	Size
682-RBM21-P0	Purified Ab with BSA and Azide at 200ug/ml	20 ug
682-RBM21-P1	Purified Ab with BSA and Azide at 200ug/ml	100 ug
682-RBM21-P1ABX	Purified Ab WITHOUT BSA and Azide at 1.0mg/ml	100 ug

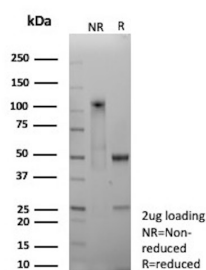
Applications	Tested Dillution	Note
Western Blot (WB)	2-4ug/ml	

Product Details

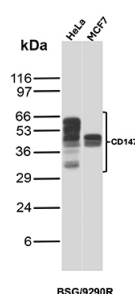
Clone	BSG/9290R
Gene Name	BSG
Immunogen	Recombinant fragment (around aa100-300) of human BSG protein (exact sequence is proprietary)
Host	Rabbit
Clonality	Monoclonal
Isotype / Light Chain	IgG / Kappa
Mol. Weight of Antigen	35kDa (non-reduced); 40kDa (reduced)
Cellular Localization	Cell membrane
Species Reactivity	Human
Positive Control	Human renal cell carcinoma, ovarian carcinoma or melanoma. HeLa cells. MCF7, Human Brain, Human Heart, Human Intestine, Human Kidney

**Optimal dilution for a specific application should be determined.*

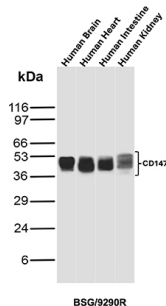
Product Images for Recombinant CD147 / BSG / EMMPRIN / Neurothelin Antibody



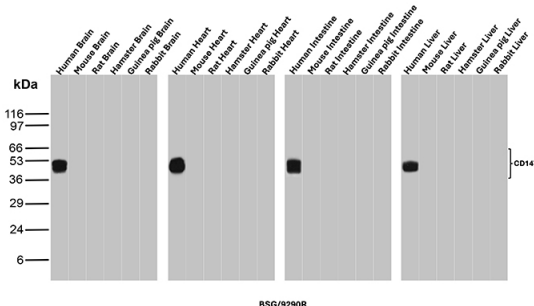
SDS-PAGE Analysis of Purified CD147 Recombinant Rabbit Monoclonal Antibody (BSG/9290R). Confirmation of Purity and Integrity of Antibody.



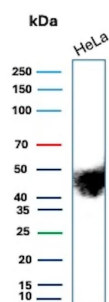
Western Blot Analysis of HeLa and MCF7 cell lysates using CD147 Recombinant Rabbit Monoclonal Antibody (BSG/9290R).



Western Blot Analysis of Human Brain, Human Heart, Human Intestine, and Human Kidney tissue lysates using CD147 Recombinant Rabbit Monoclonal Antibody (BSG/9290R).



Western blot analysis of Human Brain, Mouse Brain, Rat Brain, Hamster Brain, Guinea pig Brain, Rabbit Brain, Human Heart, Mouse Heart, Rat Heart, Hamster Heart, Guinea pig Heart, Rabbit Heart, Human Intestine, Mouse Intestine, Rat Intestine, Hamster Intestine, Guinea pig Intestine, Rabbit Intestine, Human Liver, Mouse Liver, Rat Liver, Hamster Liver, Guinea pig Liver and Rabbit Liver tissue lysates using CD147 Recombinant Rabbit Monoclonal Antibody (BSG/9290R).



Western Blot Analysis of HeLa cell lysate using CD147 Recombinant Rabbit Monoclonal Antibody (BSG/9290R).

Specificity & Comments

This MAb recognizes extracellular epitope 2 within the N-terminal Ig domain of human CD147. It is expressed more intensely on thymocytes than on mature peripheral blood T cells. CD147 is important in spermatogenesis, embryo implantation, neural network formation, and tumor progression. It stimulates the production of interstitial collagenase, gelatinase A, stromelysin-1 and various metalloproteinases (MMPs) by fibroblasts. These enzymes are important factors in cancer invasion and metastasis.

Supplied As

200ug/ml of Ab produced in CHO cell mammalian-based expression system. Prepared in 10mM PBS with 0.05% BSA & 0.05% azide. Also available WITHOUT BSA & azide at 1.0mg/ml.

Storage and Stability

Antibody with azide - store at 2 to 8°C. Antibody without azide - store at -20 to -80°C. Antibody is stable for 24 months. Non-hazardous. No MSDS required.

Research Areas

Cardiovascular, Infectious Disease

Limitations and Warranty

This antibody is available for research use only and is not approved for use in diagnosis. There are no warranties, expressed or implied, which extend beyond this description. Company is not liable for any personal injury or economic loss resulting from this product.