

## beta Amyloid Antibody

Mouse Monoclonal Antibody [Clone APP/4469]

Catalog No	Format	Size
351-MSM9-P0	Purified Ab with BSA and Azide at 200ug/ml	20 ug
351-MSM9-P1	Purified Ab with BSA and Azide at 200ug/ml	100 ug
351-MSM9-P1ABX	Purified Ab WITHOUT BSA at 1.0mg/ml	100 ug

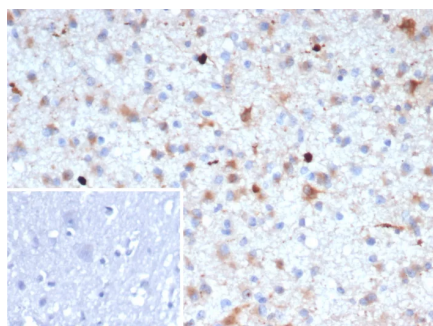
Applications	Tested Dillution	Note
Immunohistochemistry (IHC)	1-2ug/ml	30 min at RT. Staining of formalin-fixed tissues requires heating tissue sections in 10mM Tris with 1mM EDTA, pH 9.0, for 45 min at 95°C followed by cooling at RT for 20 minutes

### Product Details

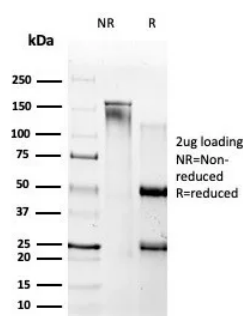
<b>Clone</b>	APP/4469
<b>Gene Name</b>	APP
<b>Immunogen</b>	Recombinant fragment (around aa1-100) of human APP protein (exact sequence is proprietary). Recognizes an epitope in the region 8-16 of the amyloid precursor protein.
<b>Host</b>	Mouse
<b>Clonality</b>	Monoclonal
<b>Isotype / Light Chain</b>	IgG1 / Kappa
<b>Mol. Weight of Antigen</b>	4-46kDa (?-Amyloid); 100-125kDa (Amyloid A4)
<b>Cellular Localization</b>	Membrane. Membrane > clathrin-coated pit. Cell surface protein that rapidly becomes internalized via clathrin-coated pits.
<b>Species Reactivity</b>	Human
<b>Positive Control</b>	Alzheimer's diseased brain. Amyloidosis.

\*Optimal dilution for a specific application should be determined.

### Product Images for beta Amyloid Antibody



Formalin-fixed, paraffin-embedded human brain stained with Beta Amyloid Mouse Monoclonal Antibody (APP/4469). Inset: PBS instead of primary antibody; secondary only negative control.



SDS-PAGE Analysis of Purified Beta Amyloid Mouse Monoclonal Antibody (APP/4469). Confirmation of Purity and Integrity of Antibody.

### **Specificity & Comments**

Proteolytic cleavage of the Amyloid protein precursor (APP) gives rise to the  $\beta$ -Amyloid and Amyloid A4 proteins, which are present in human platelets. Amyloid deposition is associated with type II diabetes, Down syndrome and a variety of neurological disorders, including Alzheimer's disease. The Amyloid precursor protein (APP) undergoes alternative splicing, resulting in several isoforms. Proteolytic cleavage of APP leads to the formation of the 4 kDa Amyloid  $\beta$ /A4 Amyloid protein. This protein is involved in the formation of neurofibrillary tangles and plaques that characterize the senile plaques of Alzheimer's patients. APLP1 (Amyloid precursor-like protein 1) and APLP2 are structurally similar to APP. Human APLP2 is a membrane-bound sperm protein that contains a region highly homologous to the transmembrane-cytoplasmic domains of APP found in brain plaques of Alzheimer's disease patients.

---

### **Limitations and Warranty**

This antibody is available for research use only and is not approved for use in diagnosis. There are no warranties, expressed or implied, which extend beyond this description. Company is not liable for any personal injury or economic loss resulting from this product.

---

### **Supplied As**

200ug/ml of Ab purified from rabbit anti-serum by Protein A. Prepared in 10mM PBS with 0.05% BSA & 0.05% azide. Also available WITHOUT BSA at 1.0mg/ml.

---

### **Storage and Stability**

Antibody with azide - store at 2 to 8°C. Antibody without azide - store at -20 to -80°C. Antibody is stable for 24 months. Non-hazardous. No MSDS required.

---

### **Research Areas**

Cardiovascular, Cytokine Signaling, Defective Intrinsic Apoptosis, Immunology, Infectious Disease, Neuroscience, Ovarian Cancer, Signal Transduction

---