

## Recombinant CD91 / LDL Receptor Related Protein 1 (LRP1) Antibody

Rabbit Monoclonal Antibody [Clone LRP1/8947R]

Catalog No	Format	Size
4035-RBM7-P0	Purified Ab with BSA and Azide at 200ug/ml	20 ug
4035-RBM7-P1	Purified Ab with BSA and Azide at 200ug/ml	100 ug
4035-RBM7-P1ABX	Purified Ab WITHOUT BSA and Azide at 1.0mg/ml	100 ug

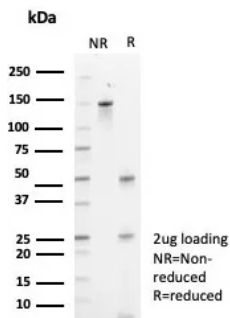
Applications	Tested Dillution	Note
Immunohistochemistry (IHC)	1-2ug/ml	30 min at RT. Staining of formalin-fixed tissues requires heating tissue sections in 10mM Tris with 1mM EDTA, pH 9.0, for 45 min at 95°C followed by cooling at RT for 20 minutes
Western Blot (WB)	2-4ug/ml	

### Product Details

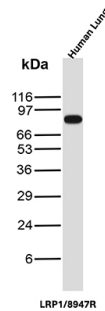
<b>Clone</b>	LRP1/8947R
<b>Gene Name</b>	LRP1
<b>Immunogen</b>	Recombinant fragment of human LRP1 protein (exact sequence is proprietary)
<b>Host</b>	Rabbit
<b>Clonality</b>	Monoclonal
<b>Isotype / Light Chain</b>	IgG / Kappa
<b>Mol. Weight of Antigen</b>	85/515/600kDa
<b>Cellular Localization</b>	Cytoplasm. Nucleus. Cell surface.
<b>Species Reactivity</b>	Human
<b>Positive Control</b>	brain or lung. Human liver

\*Optimal dilution for a specific application should be determined.

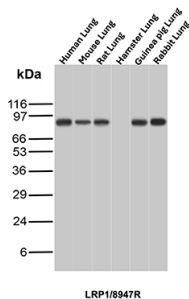
### Product Images for Recombinant CD91 / LDL Receptor Related Protein 1 (LRP1) Antibody



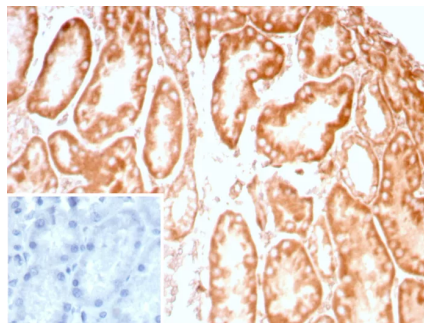
SDS-PAGE Analysis of Purified CD91 Recombinant Rabbit Monoclonal Antibody (LRP1/8947R). Confirmation of Purity and Integrity of Antibody.



Western Blot Analysis of Human lung tissue lysate using LRP1 Recombinant Rabbit Monoclonal Antibody (LRP1/8947R).



Western Blot Analysis of Lung tissue lysates of different species using LRP1 Recombinant Rabbit Monoclonal Antibody (LRP1/8947R).



Formalin-fixed, paraffin-embedded human kidney stained with CD91 / LRP1 Recombinant Rabbit Monoclonal Antibody (LRP1/8947R) Inset: PBS instead of primary antibody; secondary only negative control.

### Specificity & Comments

Members of the LDL receptor gene family, including LDLR (low density lipoprotein receptor), LEP1 (low density lipoprotein related protein), megalin (also designated GP330), VLDLR (very low density lipoprotein receptor) and apoER2 are characterized by a cluster of cysteine-rich class A repeats, epidermal growth factor (EGF)-like repeats, YWTD repeats and an O-linked sugar domain. LRP1, also designated LRP and  $\alpha$ -2-Macroglobulin receptor, is an endocytic receptor that mediates the uptake of at least 15 ligands, including  $\alpha$ -2-Macroglobulin and apoE. LRP1 is cleaved into a membrane subunit and an extracellular subunit, which remain non-covalently associated. Proper folding and trafficking of LRP1 is facilitated by the receptor-associated protein (RAP), a molecular chaperone. The uptake of all known ligands through LRP1 can be blocked by RAP, which induces a conformational change in the receptor that renders it unable to bind ligands. LRP1, which is expressed in brain, liver and lung, is also implicated in Alzheimer's disease (AD), as the human LRP gene localizes to a potential AD locus on chromosome 12.

### Limitations and Warranty

This antibody is available for research use only and is not approved for use in diagnosis. There are no warranties, expressed or implied, which extend beyond this description. Company is not liable for any personal injury or economic loss resulting from this product.

### Supplied As

200ug/ml of Ab purified from Bioreactor Concentrate by Protein A/G. Prepared in 10mM PBS with 0.05% BSA & 0.05% azide. Also available WITHOUT BSA & azide at 1.0mg/ml.

### Storage and Stability

Antibody with azide - store at 2 to 8°C. Antibody without azide - store at -20 to -80°C. Antibody is stable for 24 months. Non-hazardous. No MSDS required.

### Research Areas

Cardiovascular, Neuroscience