

Recombinant TIM3 / HAVCR2 / CD366 (Effector T-Cell Marker) Antibody

Rabbit Monoclonal Antibody [Clone TIM3/6863R]

Catalog No	Format	Size
84868-RBM13-P0	Purified Ab with BSA and Azide at 200ug/ml	20 ug
84868-RBM13-P1	Purified Ab with BSA and Azide at 200ug/ml	100 ug
84868-RBM13-P1ABX	Purified Ab WITHOUT BSA and Azide at 1.0mg/ml	100 ug

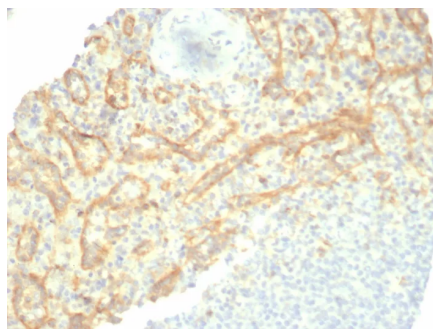
Applications	Tested Dillution	Note
Immunohistochemistry (IHC)	1-2ug/ml	30 min at RT. Staining of formalin-fixed tissues requires heating tissue sections in 10mM Tris with 1mM EDTA, pH 9.0, for 45 min at 95°C followed by cooling at RT for 20 minutes
Western Blot (WB)	2-4ug/ml	

Product Details

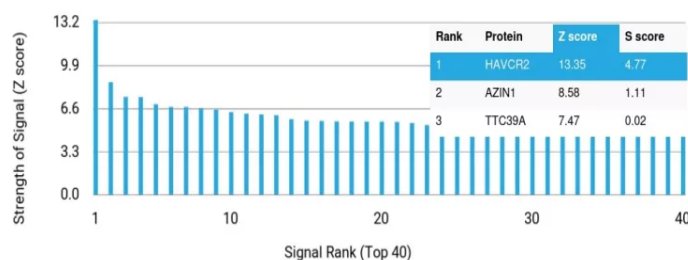
Clone	TIM3/6863R
Gene Name	HAVCR2
Immunogen	Recombinant fragment of human TIM3 protein (around aa1-200) (exact sequence is proprietary)
Host	Rabbit
Clonality	Monoclonal
Isotype / Light Chain	IgG / Kappa
Mol. Weight of Antigen	60kDa
Cellular Localization	Cell surface
Species Reactivity	Human
Positive Control	PC3, HepG2, BT474, HDLM-2 or Daudi cells. Human tonsil, Kidney, lymph node or spleen.

*Optimal dilution for a specific application should be determined.

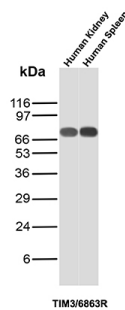
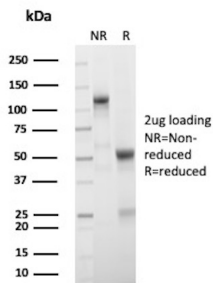
Product Images for Recombinant TIM3 / HAVCR2 / CD366 (Effector T-Cell Marker) Antibody



Formalin-fixed, paraffin-embedded human spleen stained with TIM3 Recombinant Rabbit Monoclonal Antibody (TIM3/6863R). HIER: Tris/EDTA, pH9.0, 45min. 2°C: HRP-polymer, 30min. DAB, 5min.

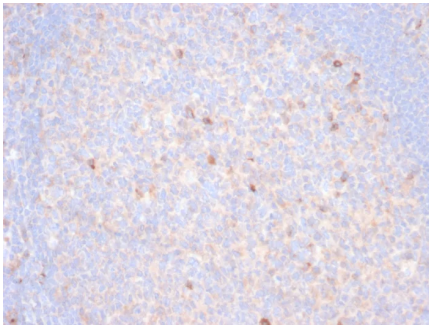


Analysis of Protein Array containing more than 19,000 full-length human proteins using TIM-3 Recombinant Rabbit Monoclonal Antibody (TIM3/6863R) Z- and S- Score: The Z-score represents the strength of a signal that a monoclonal antibody (MAB) (in combination with a fluorescently-tagged anti-IgG secondary antibody) produces when binding to a particular protein on the HuProt™ array. Z-scores are described in units of standard deviations (SD's) above the mean value of all signals generated on that array. If targets on HuProt™ are arranged in descending order of the Z-score, the S-score is the difference (also in units of SD's) between the Z-score. S-score therefore represents the relative target specificity of a MAB to its intended target. A MAB is considered to be specific to its intended target, if the MAB has an S-score of at least 2.5. For example, if a MAB binds to protein X with a Z-score of 43 and to protein Y with a Z-score of 14, then the S-score for the binding of that MAB to protein X is equal to 29.



SDS-PAGE Analysis of Purified TIM3 Recombinant Rabbit Monoclonal Antibody (TIM3/6863R). Confirmation of Purity and Integrity of Antibody.

Western blot analysis of Human Kidney and Human Spleen tissue lysates using TIM3 Recombinant Rabbit Monoclonal Antibody (TIM3/6863R).



Formalin-fixed, paraffin-embedded human tonsil stained with TIM3 Recombinant Rabbit Monoclonal Antibody (TIM3/6863R). HIER: Tris/EDTA, pH9.0, 45min. 2°C: HRP-polymer, 30min. DAB, 5min.

Specificity & Comments

HAVCR2 also known as TIM3 (T cell immunoglobulin and mucin domain-3), is a 60kDa member of the TIM family of immune regulating molecules. TIMs are type I transmembrane glycoproteins with one Ig-like V-type domain and a Ser/Thr-rich mucin stalk region. TIMs are type I transmembrane glycoproteins with one Ig-like V-type domain and a Ser/Thr-rich mucin stalk. TIM-3 is expressed on the surface of effector T cells (CD4+Th1 and CD8+Tc1) but not on helper T cells (CD4+Th2 and CD8+Tc2). In chronic inflammation, autoimmune disorders, and some cancers, TIM-3 is upregulated on several other hematopoietic cell types. The Ig domain of TIM-3 interacts with a ligand on resting but not activated Th1 and Th2 cells. The glycosylated Ig domain of TIM-3 binds cell-associated galectin-9. This induces TIM-3 Tyr phosphorylation and pro-apoptotic signaling. TIM-3 functions as a negative regulator of Th1 cell activity. Its blockade results in increased IFN-gamma production, Th1 cell proliferation and cytotoxicity, regulatory T cell development, and increases in macrophage and neutrophil infiltration into sites of inflammation.

Limitations and Warranty

This antibody is available for research use only and is not approved for use in diagnosis. There are no warranties, expressed or implied, which extend beyond this description. Company is not liable for any personal injury or economic loss resulting from this product.

Supplied As

200ug/ml of Ab purified from Bioreactor Concentrate by Protein A/G. Prepared in 10mM PBS with 0.05% BSA & 0.05% azide. Also available WITHOUT BSA & azide at 1.0mg/ml.

Storage and Stability

Antibody with azide - store at 2 to 8°C. Antibody without azide - store at -20 to -80°C. Antibody is stable for 24 months. Non-hazardous. No MSDS required.

Research Areas

Cardiovascular, Cytokine Signaling, Immunology