

Recombinant Actin, Muscle Specific (Muscle Cell Marker) Antibody

Rabbit Monoclonal Antibody [Clone MSA/8949R]

Catalog No	Format	Size
RBM6-8949-P0	Purified Ab with BSA and Azide	200ug/ml
RBM6-8949-P1	Purified Ab with BSA and Azide	200ug/ml
RBM6-8949-P1ABX	Purified Ab WITHOUT BSA and Azide	1.0mg/ml

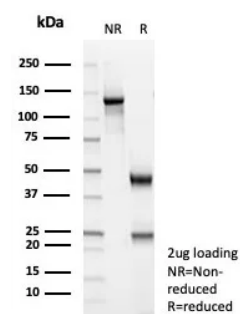
Applications	Tested Dillution
--------------	------------------

Product Details

Clone	MSA/8949R
Gene Name	ACTA2
Immunogen	Recombinant protein corresponding to human muscle actin
Host	Rabbit
Clonality	Monoclonal
Isotype / Light Chain	IgG / Kappa
Mol. Weight of Antigen	42kDa
Cellular Localization	Cytoplasm.
Species Reactivity	Human
Positive Control	Muscle or sarcoma.

**Optimal dilution for a specific application should be determined.*

Product Images for Recombinant Actin, Muscle Specific (Muscle Cell Marker) Antibody



SDS-PAGE Analysis of Purified MSA Recombinant Rabbit Monoclonal Antibody (MSA/8949R). Confirmation of Purity and Integrity of Antibody.

Specificity & Comments

This antibody recognizes actin of skeletal, cardiac, and smooth muscle cells. It is not reactive with other mesenchymal cells except for myoepithelium. Actin can be resolved on the basis of its isoelectric points into three distinctive components: alpha, beta, and gamma in order of increasing isoelectric point. Anti-muscle specific actin recognizes alpha and gamma isotypes of all muscle groups. Non-muscle cells such as vascular endothelial cells and connective tissues are non-reactive. Also, neoplastic cells of non-muscle-derived tissue such as carcinomas, melanomas, and lymphomas are negative. It stains tumors of smooth muscle (leiomyomas and leiomyosarcomas) as well as skeletal muscle (rhabdomyomas and rhabdomyosarcomas).

Known Applications & Suggested Dilutions

ELISA (For coating, order antibody without BSA) | ,Optimal dilution for a specific application should be determined.

Supplied As

200ug/ml of Ab purified from Bioreactor Concentrate by Protein A/G. Prepared in 10mM PBS with 0.05% BSA & 0.05% azide. Also available WITHOUT BSA & azide at 1.0mg/ml.

Storage and Stability

Antibody with azide - store at 2 to 8°C. Antibody without azide - store at -20 to -80°C. Antibody is stable for 24 months. Non-hazardous. No MSDS required.

Limitations and Warranty

This antibody is available for research use only and is not approved for use in diagnosis.

There are no warranties, expressed or implied, which extend beyond this description. Company is not liable for any personal injury or economic loss resulting from this product.
