

Recombinant S100A12 / CGRP Antibody

Rabbit Monoclonal Antibody [Clone S100A12/8952R]

| Catalog No | Format | Size |
|-----------------|--|--------|
| 6283-RBM9-P0 | Purified Ab with BSA and Azide at 200ug/ml | 20 ug |
| 6283-RBM9-P1 | Purified Ab with BSA and Azide at 200ug/ml | 100 ug |
| 6283-RBM9-P1ABX | Purified Ab WITHOUT BSA or Azide at 1.0mg/ml | 100 ug |

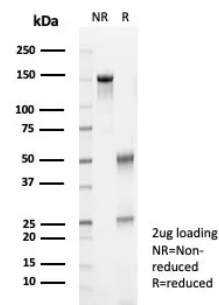
| Applications | Tested Dillution | Note |
|----------------------------|------------------|---|
| Immunohistochemistry (IHC) | 1-2ug/ml | 30 min at RT. Staining of formalin-fixed tissues requires heating tissue sections in 10mM Tris with 1mM EDTA, pH 9.0, for 45 min at 95°C followed by cooling at RT for 20 minutes |
| Western Blot (WB) | 2-4ug/ml | |

Product Details

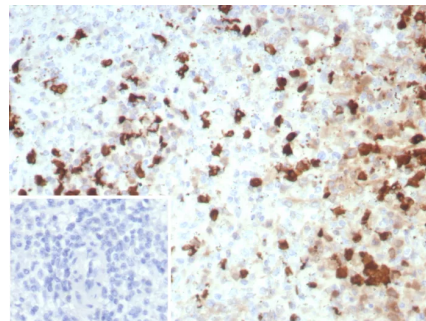
| | |
|-------------------------------|---|
| Clone | S100A12/8952R |
| Immunogen | Recombinant fragment (around aa3-92) of the human S100A12 protein (exact sequence is proprietary) |
| Host | Rabbit |
| Clonality | Monoclonal |
| Isotype / Light Chain | IgG / Kappa |
| Mol. Weight of Antigen | 10.57kDa |
| Cellular Localization | Cell membrane, Cytoplasm, Cytoskeleton, Secreted |
| Species Reactivity | Human |
| Positive Control | Monocytes and lymphocytes. |

*Optimal dilution for a specific application should be determined.

Product Images for Recombinant S100A12 / CGRP Antibody



SDS-PAGE Analysis of Purified S100A12 Recombinant Rabbit Monoclonal Antibody (S100A12/8952R). Confirmation of Purity and Integrity of Antibody.



Formalin-fixed, paraffin-embedded human spleen stained with S100A12 Recombinant Rabbit Monoclonal Antibody (S100A12/8952R). Inset: PBS instead of primary antibody; secondary only negative control.

Specificity & Comments

The family of EF-hand type Ca²⁺-binding proteins includes Calbindin (previously designated vitamin D-dependent Ca²⁺-binding protein), S-100 β and γ , Calgranulins A (also designated MRP8), B (also designated MRP14) and C (S-100 like proteins) and the parvalbumin family members, including parvalbumin β and parvalbumin γ (also designated oncomodulin). Calbindin, S-100 proteins and parvalbumin proteins are each expressed in neural tissues. In addition, S-100 β and γ are present in a variety of other tissues, and Calbindin is present in intestine and kidney. Parvalbumin β is also found in fast-contracting/relaxing skeletal muscle fibers and parvalbumin γ is found in many tumor tissues as well as in the organ of Corti. Calbindin, S-100 proteins and parvalbumins have all been detected in Leydig cells and the testis. These proteins are thought to play a role in hormone production and spermatogenesis. Calgranulin is expressed in macrophages and epithelial cells.

Limitations and Warranty

This antibody is available for research use only and is not approved for use in diagnosis. There are no warranties, expressed or implied, which extend beyond this description. Company is not liable for any personal injury or economic loss resulting from this product.

Supplied As

200ug/ml of Ab produced in a mammalian-based expression system. Prepared in 10mM PBS with 0.05% BSA & 0.05% azide. Also available WITHOUT BSA & azide at 1.0mg/ml.

Storage and Stability

Antibody with azide - store at 2 to 8 °C. Antibody without azide - store at -20 to -80 °C. Antibody is stable for 24 months. Non-hazardous. No MSDS required.
