

Recombinant LEF1 / TCF1 alpha (Transcription Factor) Antibody

Rabbit Monoclonal Antibody [Clone LEF1/8629R]

| Catalog No | Format | Size |
|------------------|---|--------|
| 51176-RBM8-P0 | Purified Ab with BSA and Azide at 200ug/ml | 20 ug |
| 51176-RBM8-P1 | Purified Ab with BSA and Azide at 200ug/ml | 100 ug |
| 51176-RBM8-P1ABX | Purified Ab WITHOUT BSA and Azide at 1.0mg/ml | 100 ug |

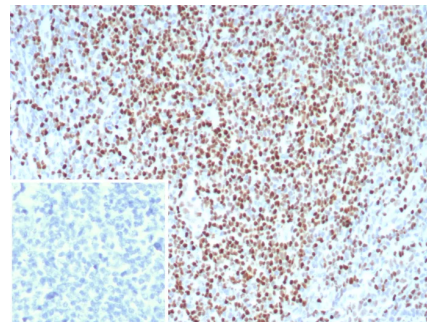
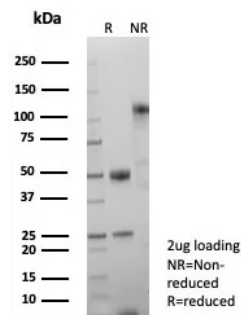
| Applications | Tested Dillution | Note |
|----------------------------|------------------|---|
| Immunohistochemistry (IHC) | 1-2ug/ml | 30 min at RT. Staining of formalin-fixed tissues requires heating tissue sections in 10mM Tris with 1mM EDTA, pH 9.0, for 45 min at 95°C followed by cooling at RT for 20 minutes |

Product Details

| | |
|-------------------------------|---|
| Clone | LEF1/8629R |
| Gene Name | LEF1 |
| Immunogen | Recombinant fragment (around aa1-300) of human LEF1 protein (exact sequence is proprietary) |
| Host | Rabbit |
| Clonality | Monoclonal |
| Isotype / Light Chain | IgG / Kappa |
| Mol. Weight of Antigen | 44kDa |
| Cellular Localization | Nucleus. |
| Species Reactivity | Human |
| Positive Control | Human tonsil and thymus. |

*Optimal dilution for a specific application should be determined.

Product Images for Recombinant LEF1 / TCF1 alpha (Transcription Factor) Antibody



SDS-PAGE Analysis of Purified LEF1 Recombinant Rabbit Monoclonal Antibody (LEF1/8629R). Confirmation of Purity and Integrity of Antibody.

Formalin-fixed, paraffin-embedded analysis of human tonsil. Strong nuclear staining of non-germinal center cells using LEF1/8629R. Inset: PBS instead of primary antibody; secondary only negative control.

Specificity & Comments

Lymphoid Enhancing Factor 1 (LEF1) is a transcription factor that belongs to the TCF/LEF family. LEF1 participates as a regulator in Wnt signaling pathways. LEF1 is an important factor in lymphopoiesis and is expressed normally in T and pro-B cells but not expressed in mature B cells. Anti-LEF1 may be used as an aid for differentiation of chronic lymphocytic leukemia/small lymphocytic lymphoma from other small B cell lymphomas.

Supplied As

200ug/ml of Ab purified from Bioreactor Concentrate by Protein A/G. Prepared in 10mM PBS with 0.05% BSA & 0.05% azide. Also available WITHOUT BSA & azide at 1.0mg/ml.

Storage and Stability

Antibody with azide store at 2 to 8°C. Antibody without azide store at -20 to -80°C. Antibody is stable for 24 months. Non-hazardous. No MSDS required.

Research Areas

BBB VCAM-1 Signaling, Breast Cancer, Cardiovascular, Colon Cancer, Developmental Biology, Endothelial Cell Marker, Nuclear Marker, Signal Transduction, Transcription Factors

Limitations and Warranty

This antibody is available for research use only and is not approved for use in diagnosis. There are no warranties, expressed or implied, which extend beyond this description. Company is not liable for any personal injury or economic loss resulting from this product.
