

KCNIP2 / KCHIP2 Antibody

Mouse Monoclonal Antibody [Clone KCNIP2/7588]

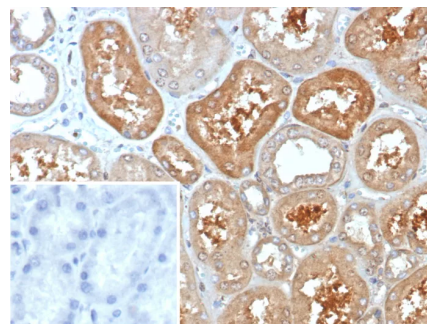
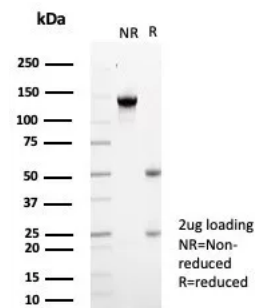
Catalog No	Format	Size
30819-MSM2-P0	Purified Ab with BSA and Azide at 200ug/ml	20 ug
30819-MSM2-P1	Purified Ab with BSA and Azide at 200ug/ml	100 ug
30819-MSM2-P1ABX	Purified Ab WITHOUT BSA and Azide at 1.0mg/ml	100 ug

Applications	Tested Dillution	Note
Immunohistochemistry (IHC)	1-2ug/ml	30 min at RT. Staining of formalin-fixed tissues requires heating tissue sections in 10mM Tris with 1mM EDTA, pH 9.0, for 45 min at 95°C followed by cooling at RT for 20 minutes

Product Details	
Clone	KCNIP2/7588
Gene Name	KCNIP2
Immunogen	Recombinant fragment (around aa1-270) of human KCNIP2 protein (exact sequence is proprietary)
Host	Mouse
Clonality	Monoclonal
Isotype / Light Chain	IgG1 / Kappa
Mol. Weight of Antigen	27-36kDa
Cellular Localization	Cell membrane
Species Reactivity	Human
Positive Control	Human brain.

*Optimal dilution for a specific application should be determined.

Product Images for KCNIP2 / KCHIP2 Antibody



SDS-PAGE Analysis of Purified KCNIP2 Mouse Monoclonal Antibody (KCNIP2/7588). Confirmation of Purity and Integrity of Antibody.

Formalin-fixed, paraffin-embedded human kidney stained with KCNIP2 Mouse Monoclonal Antibody (KCNIP2/7588). Inset: PBS instead of primary antibody; secondary only negative control.

Specificity & Comments

In the brain and heart, rapidly inactivating (A-type) voltage-gated potassium (Kv) currents control the excitability of neurons and cardiac myocytes. KChIPs are Kv channel-interacting proteins that bind to the cytoplasmic amino termini of Kv4?-subunits and are integral components of native Kv4 channel complexes. KChIP family members include KChIP1 expressed in brain, KChIP2 expressed in heart, brain, and lung, and KChIP3 (previously identified as calsenilin) expressed in brain and testis. In rat brain, KChIP1 colocalizes with Kv4.3 in granule cells and KChIP2 colocalizes with Kv4.2 in both neocortical and subcortical structures. The KChIPs are members of the recoverin/neuronal calcium sensor-1 subfamily of calcium-binding proteins and show 99% nucleotide homology to DREAM, suggesting that KChIPs may have activity beyond modulation of Kv4 channels.

Limitations and Warranty

This antibody is available for research use only and is not approved for use in diagnosis. There are no warranties, expressed or implied, which extend beyond this description. Company is not liable for any personal injury or economic loss resulting from this product.

Supplied As

200ug/ml of Ab purified from Bioreactor Concentrate by Protein A/G. Prepared in 10mM PBS with 0.05% BSA & 0.05% azide. Also available WITHOUT BSA & azide at 1.0mg/ml.

Storage and Stability

Antibody with azide - store at 2 to 8°C. Antibody without azide - store at -20 to -80°C. Antibody is stable for 24 months. Non-hazardous. No MSDS required.
