

Kallikrein 5 (KLK5) Antibody

Mouse Monoclonal Antibody [Clone KLK5/4760]

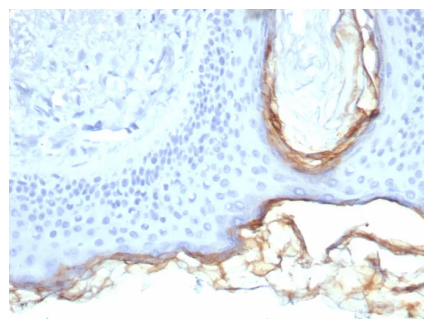
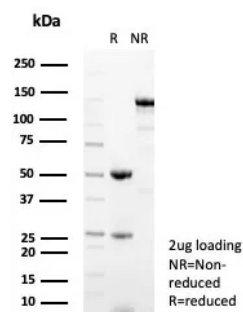
Catalog No	Format	Size
25818-MSM20-P0	Purified Ab with BSA and Azide	200ug/ml
25818-MSM20-P1	Purified Ab with BSA and Azide	200ug/ml
25818-MSM20-P1ABX	Purified Ab WITHOUT BSA and Azide	1.0mg/ml

Applications	Tested Dillution
Immunohistochemistry (IHC)	1-2ug/ml

Product Details	
Clone	KLK5/4760
Gene Name	KLK5
Immunogen	Recombinant fragment of human KLK5 protein (around aa 1-200) (exact sequence is proprietary)
Host	Mouse
Clonality	Monoclonal
Isotype / Light Chain	IgG2 / Kappa
Mol. Weight of Antigen	33kDa
Cellular Localization	Secreted.
Species Reactivity	Human
Positive Control	Human skin tissue (IHC). MCF-7 cell lysates.

**Optimal dilution for a specific application should be determined.*

Product Images for Kallikrein 5 (KLK5) Antibody



SDS-PAGE Analysis of Purified Kallikrein 5 Mouse Monoclonal Antibody (KLK5/4760). Confirmation of Integrity and Purity of Antibody

Formalin-fixed, paraffin-embedded human skin stained with Kallikrein 5 Mouse Monoclonal Antibody (KLK5/4760). HIER: Tris/EDTA, pH9.0, 45min. 2°C: HRP-polymer, 30min. DAB, 5min.

Specificity & Comments

Kallikreins (KLKs) belong to the serine protease family of proteolytic enzymes. Human pancreatic/renal KLK encodes for the KLK1 enzyme, which is involved in post-translational processing of polypeptide precursors. The function of the other members of KLK gene family is still currently unknown, but evidence suggests that many KLKs are implicated in carcinogenesis. The human KLK gene family consists of 15 serine proteases. The human KLK genes are clustered on chromosome 19q13. Unlike other kallikreins, the KLK4-15 encoded proteases are less related and do not contain a conventional KLK loop. Clusters of genes exhibit high prostatic (KLK2-4, KLK15) or pancreatic (KLK6-13) expression. KLK2 is also known as glandular kallikrein 2, tissue kallikrein, or HGK-1 and KLK3 is known as prostate-specific antigen (PSA). Both KLK2 and KLK3 have important applications in prostate cancer and breast cancer diagnostics. Many of the KLKs are regulated by steroid hormones and a few of them, specifically KLK3, KLK6 and KLK10, are known to be downregulated in breast and other cancers. KLK5 expression is abundant in skin, mammary gland and testis.

Research Areas

Developmental Biology

Known Applications & Suggested Dilutions

Immunohistochemistry (Formalin-fixed) (1-2ug/ml for 30 minutes at RT),(Staining of formalin-fixed tissues requires heating tissue sections in 10mM Tris with 1mM EDTA, pH 9.0, for 45 min at 95°C followed by cooling at RT for 20 minutes),Optimal dilution for a specific application should be determined.

Limitations and Warranty

This antibody is available for research use only and is not approved for use in diagnosis.

There are no warranties, expressed or implied, which extend beyond this description. Company is not liable for any personal injury or economic loss resulting from this product.

Supplied As

200ug/ml of Ab purified from Bioreactor Concentrate by Protein A/G. Prepared in 10mM PBS with 0.05% BSA & 0.05% azide. Also available WITHOUT BSA & azide at 1.0mg/ml.

Storage and Stability

Antibody with azide - store at 2 to 8°C. Antibody without azide - store at -20 to -80°C. Antibody is stable for 24 months. Non-hazardous. No MSDS required.