

Recombinant GCDFP-15 (Gross Cystic Disease Fluid Protein 15) (Breast Marker) Antibody

Rabbit Monoclonal Antibody [Clone PIP/9076R]

Catalog No	Format	Size
5304-RBM11-P0	Purified Ab with BSA and Azide at 200ug/ml	20 ug
5304-RBM11-P1	Purified Ab with BSA and Azide at 200ug/ml	100 ug
5304-RBM11-P1ABX	Purified Ab WITHOUT BSA and Azide at 1.0mg/ml	100 ug

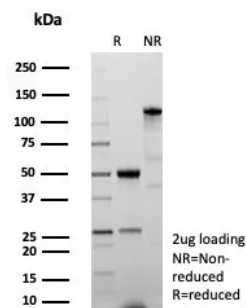
Applications	Tested Dillution	Note
Immunohistochemistry (IHC)	1-2ug/ml	30 min at RT. Staining of formalin-fixed tissues requires heating tissue sections in 10mM Tris with 1mM EDTA, pH 9.0, for 45 min at 95°C followed by cooling at RT for 20 minutes

Product Details

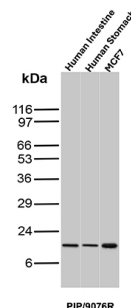
Clone	PIP/9076R
Gene Name	PIP
Immunogen	Recombinant fragment (around aa 1-146) of human GCDFP-15 protein (exact sequence is proprietary)
Host	Rabbit
Clonality	Monoclonal
Isotype / Light Chain	IgG / Kappa
Mol. Weight of Antigen	15kDa
Cellular Localization	Cytoplasm (Golgi bodies). Secreted.
Species Reactivity	Human
Positive Control	HepG2 cells. Human breast or pancreas. Intestine, Stomach, MCF7

*Optimal dilution for a specific application should be determined.

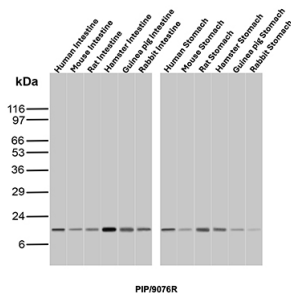
Product Images for Recombinant GCDFP-15 (Gross Cystic Disease Fluid Protein 15) (Breast Marker) Antibody



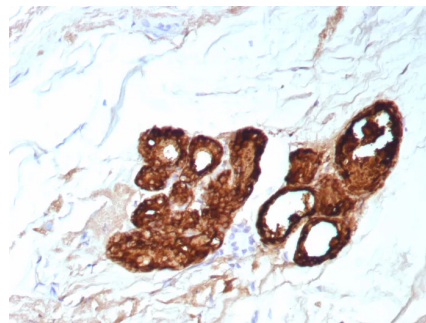
SDS-PAGE Analysis of Purified GCDFP-15 Recombinant Rabbit Monoclonal Antibody (PIP/9076R). Confirmation of Purity and Integrity of Antibody.



Western Blot Analysis of Human Intestine, Human Stomach and MCF7 lysates using GCDFP-15 Recombinant Rabbit Monoclonal Antibody (PIP/9076R).



Western Blot Analysis of Intestine and Stomach tissue lysates of different species using GCDFP-15 Recombinant Rabbit Monoclonal Antibody (PIP/9076R).



Formalin-fixed, paraffin-embedded human breast carcinoma stained with GCDFP-15 Recombinant Rabbit Monoclonal Antibody (PIP/9076R). HIER: Tris/EDTA, pH9.0, 45min. 2°C: HRP-polymer, 30min. DAB, 5min.

Specificity & Comments

It recognizes a protein of 15kDa, identified as Gross cystic disease fluid protein 15 (GCDFP-15). It is a major protein component of benign breast gross cysts. It is a known marker of breast cancer, as it is found in approximately 50% of all breast cancer specimens. GCDFP-15, also known as PIP, for prolactin inducible protein, is a prolactin and androgen-controlled protein. This antibody is useful in the identification of metastatic breast carcinoma, or fluid analysis.

Supplied As

200ug/ml of Ab purified from Bioreactor Concentrate by Protein A/G. Prepared in 10mM PBS with 0.05% BSA & 0.05% azide. Also available WITHOUT BSA & azide at 1.0mg/ml.

Storage and Stability

Antibody with azide - store at 2 to 8°C. Antibody without azide - store at -20 to -80°C. Antibody is stable for 24 months. Non-hazardous. No MSDS required.

Research Areas

AKT Signaling

Limitations and Warranty

This antibody is available for research use only and is not approved for use in diagnosis. There are no warranties, expressed or implied, which extend beyond this description. Company is not liable for any personal injury or economic loss resulting from this product.