

## Recombinant Smooth Muscle Myosin Heavy Chain (SM-MHC) Antibody

Mouse Monoclonal Antibody [Clone rMYH11/9918]

Catalog No	Format	Size
4629-MSM15-P0	Purified Ab with BSA and Azide at 200ug/ml	20 ug
4629-MSM15-P1	Purified Ab with BSA and Azide at 200ug/ml	100 ug
4629-MSM15-P1ABX	Purified Ab WITHOUT BSA or Azide at 1.0mg/ml	100 ug

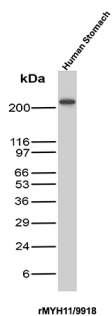
Applications	Tested Dillution	Note
Immunohistochemistry (IHC)	1-2ug/ml	30 min at RT. Staining of formalin-fixed tissues requires heating tissue sections in 10mM Tris with 1mM EDTA, pH 9.0, for 45 min at 95°C followed by cooling at RT for 20 minutes
Western Blot (WB)	2-4ug/ml	

### Product Details

<b>Clone</b>	rMYH11/9918
<b>Immunogen</b>	Recombinant fragment (around aa4-17) of the human Myosin, Smooth Muscle Heavy Chain protein (exact sequence is proprietary)
<b>Host</b>	Mouse
<b>Clonality</b>	Monoclonal
<b>Isotype / Light Chain</b>	IgG2b / Kappa
<b>Mol. Weight of Antigen</b>	227.34kDa
<b>Cellular Localization</b>	Melanosome
<b>Species Reactivity</b>	Human
<b>Positive Control</b>	Stomach.

\*Optimal dilution for a specific application should be determined.

### Product Images for Recombinant Smooth Muscle Myosin Heavy Chain (SM-MHC) Antibody



Western Blot Analysis of Human Stomach tissue lysate using SM-MHC Mouse Recombinant Monoclonal Antibody (rMYH11/9918).

### Specificity & Comments

Smooth muscle myosin heavy chain (SM-MHC) is a cytoplasmic structural protein, which is a major component of the contractile apparatus in smooth muscle cells. Expression of smooth muscle myosin is developmentally regulated, appearing early in smooth muscle development, and is specific for smooth muscle development. Two isoforms of smooth muscle myosin heavy chain have been identified, designated MHC-1 and MHC-2. The antibody may be useful for the study of breast tumors as the presence of an intact layer of myoepithelial cells is an important feature, which may distinguish benign breast lesions and carcinoma in situ from invasive tumors.

### Supplied As

200ug/ml of Ab produced in a mammalian-based expression system. Prepared in 10mM PBS with 0.05% BSA & 0.05% azide. Also available WITHOUT BSA & azide at 1.0mg/ml.

### Storage and Stability

Antibody with azide - store at 2 to 8 °C. Antibody without azide - store at -20 to -80 °C. Antibody is stable for 24 months. Non-hazardous. No MSDS required.

## Limitations and Warranty

This antibody is available for research use only and is not approved for use in diagnosis. There are no warranties, expressed or implied, which extend beyond this description. Company is not liable for any personal injury or economic loss resulting from this product.

---