

## Recombinant IMP-3 Antibody

Rabbit Monoclonal Antibody [Clone IMP3/8934R]

Catalog No	Format	Size
55272-RBM3-P0	Purified Ab with BSA and Azide at 200ug/ml	20 ug
55272-RBM3-P1	Purified Ab with BSA and Azide at 200ug/ml	100 ug
55272-RBM3-P1ABX	Purified Ab WITHOUT BSA and Azide at 1.0mg/ml	100 ug

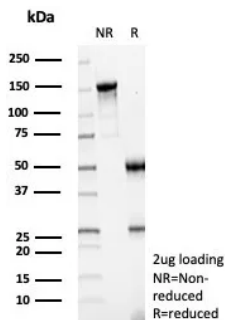
Applications	Tested Dillution	Note
Immunohistochemistry (IHC)	1-2ug/ml	30 min at RT. Staining of formalin-fixed tissues requires heating tissue sections in 10mM Tris with 1mM EDTA, pH 9.0, for 45 min at 95°C followed by cooling at RT for 20 minutes
Western Blot (WB)	2-4ug/ml	

### Product Details

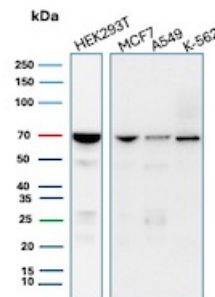
<b>Clone</b>	IMP3/8934R
<b>Gene Name</b>	IMP3
<b>Immunogen</b>	Recombinant fragment of human IMP3 protein (exact sequence is proprietary)
<b>Host</b>	Rabbit
<b>Clonality</b>	Monoclonal
<b>Isotype / Light Chain</b>	IgG / Kappa
<b>Mol. Weight of Antigen</b>	22-70kDa
<b>Cellular Localization</b>	Nucleus.
<b>Species Reactivity</b>	Human
<b>Positive Control</b>	HEK293T, MCF7, A549, K-562 , brain or lung. Human liver

\*Optimal dilution for a specific application should be determined.

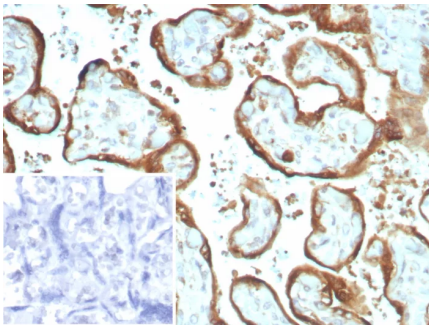
### Product Images for Recombinant IMP-3 Antibody



SDS-PAGE Analysis of Purified IMP-3 Recombinant Rabbit Monoclonal Antibody (IMP3/8934R). Confirmation of Purity and Integrity of Antibody.



Western blot analysis of HEK293T, MCF7, A549 and K-562 cell lysates using IMP3 Recombinant Rabbit Monoclonal Antibody (IMP3/8934R).



Formalin-fixed, paraffin-embedded human placenta stained with IMP-3 Recombinant Rabbit Monoclonal Antibody (IMP3/8934R) Inset: PBS instead of primary antibody; secondary only negative control.

### Specificity & Comments

Imp3, also known as BRMS2, C15orf12 or MRPS4, is a 184 amino acid protein that contains one S4 RNA-binding domain and is the mammalian homolog of the yeast Imp3 protein. Localized to the nucleus, Imp3 exists as a component of a heterotrimeric complex consisting of MPP10, Imp3 and Imp4 and, in this complex, plays a key role in early cleavage events during pre-18S ribosomal processing. The gene encoding Imp3 maps to human chromosome 15, which houses over 700 genes and comprises nearly 3% of the human genome. Angelman syndrome, Prader-Willi syndrome, Tay-Sachs disease and Marfan syndrome are all associated with defects in chromosome 15-localized genes.

### Limitations and Warranty

This antibody is available for research use only and is not approved for use in diagnosis. There are no warranties, expressed or implied, which extend beyond this description. Company is not liable for any personal injury or economic loss resulting from this product.

### Supplied As

200ug/ml of Ab purified from Bioreactor Concentrate by Protein A/G. Prepared in 10mM PBS with 0.05% BSA & 0.05% azide. Also available WITHOUT BSA & azide at 1.0mg/ml.

### Storage and Stability

Antibody with azide - store at 2 to 8°C. Antibody without azide - store at -20 to -80°C. Antibody is stable for 24 months. Non-hazardous. No MSDS required.