

## ABCB11 / BSEP Antibody

Mouse Monoclonal Antibody [Clone BSEP/7534]

Catalog No	Format	Size
8647-MSM4-P0	Purified Ab with BSA and Azide at 200ug/ml	20 ug
8647-MSM4-P1	Purified Ab with BSA and Azide at 200ug/ml	100 ug
8647-MSM4-P1ABX	Purified Ab WITHOUT BSA and Azide at 1.0mg/ml	100 ug

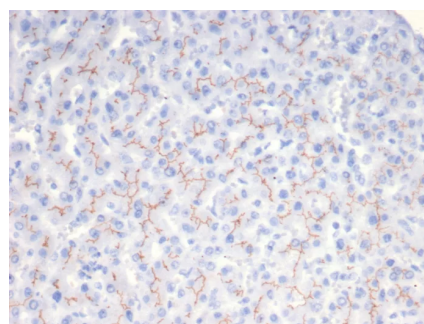
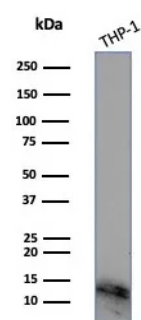
Applications	Tested Dillution	Note
Immunohistochemistry (IHC)	1-2ug/ml	30 min at RT. Staining of formalin-fixed tissues requires heating tissue sections in 10mM Tris with 1mM EDTA, pH 9.0, for 45 min at 95°C followed by cooling at RT for 20 minutes
Western Blot (WB)	2-4ug/ml	

### Product Details

<b>Clone</b>	BSEP/7534
<b>Gene Name</b>	ABCB11
<b>Immunogen</b>	Recombinant fragment (around aa600-800) of human ABCB11 protein (exact sequence is proprietary)
<b>Host</b>	Mouse
<b>Clonality</b>	Monoclonal
<b>Isotype / Light Chain</b>	IgG2b / Kappa
<b>Mol. Weight of Antigen</b>	160-190kDa
<b>Cellular Localization</b>	Cell membrane
<b>Species Reactivity</b>	Human
<b>Positive Control</b>	Human liver or adrenal gland.

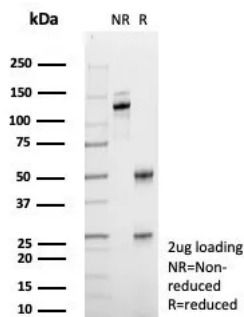
*\*Optimal dilution for a specific application should be determined.*

### Product Images for ABCB11 / BSEP Antibody



Western blot analysis of THP-1 cell lysate using ABCB11 / BSEP Mouse Monoclonal Antibody (BSEP/7534).

Formalin-fixed, paraffin-embedded human liver stained with ABCB11 / BSEP Mouse Monoclonal Antibody (BSEP/7534). HIER: Tris/EDTA, pH9.0, 45min. 2°C: HRP-polymer, 30min. DAB, 5min.



SDS-PAGE Analysis of Purified ABCB11 / BSEP Mouse Monoclonal Antibody (BSEP/7534). Confirmation of Purity and Integrity of Antibody.

### Specificity & Comments

ATP-binding cassette (ABC) transporters are an evolutionarily conserved family of proteins that catalyze the transport of molecules across extra- and intracellular membranes through the energy of ATP hydrolysis. ABC genes comprise seven subfamilies, designated ABC1, Mdr/TAP, MRP, ALD, OABP, GCN20 and White. The secretion of bile salt molecules from blood into bile is a major driving force for bile formation. Bile salt export pump (BSEP) is a member of the Mdr/TAP subfamily of ABC transporters that mediates the transport of bile acids across the hepatocyte canalicular membrane and regulates bile acid-dependent bile secretion. BSEP contains putative phosphorylation sites for protein kinase A, protein kinase C (PKC) and Ca<sup>2+</sup>-calmodulin dependent kinase II, whose regulation may be dependent on bile salt concentration.

### Limitations and Warranty

This antibody is available for research use only and is not approved for use in diagnosis. There are no warranties, expressed or implied, which extend beyond this description. Company is not liable for any personal injury or economic loss resulting from this product.

### Supplied As

200ug/ml of Ab purified from Bioreactor Concentrate by Protein A/G. Prepared in 10mM PBS with 0.05% BSA & 0.05% azide. Also available WITHOUT BSA & azide at 1.0mg/ml.

### Storage and Stability

Antibody with azide - store at 2 to 8°C. Antibody without azide - store at -20 to -80°C. Antibody is stable for 24 months. Non-hazardous. No MSDS required.

### Research Areas

Cardiovascular, Infectious Disease