

Recombinant MCM3 (Proliferation Marker) Antibody

Rabbit Monoclonal Antibody [Clone MCM3/8972R]

Catalog No	Format	Size
4172-RBM6-P0	Purified Ab with BSA and Azide at 200ug/ml	20 ug
4172-RBM6-P1	Purified Ab with BSA and Azide at 200ug/ml	100 ug
4172-RBM6-P1ABX	Purified Ab WITHOUT BSA and Azide at 1.0mg/ml	100 ug

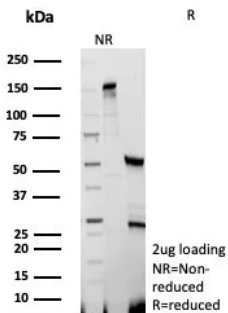
Applications	Tested Dillution	Note
Immunohistochemistry (IHC)	1-2ug/ml	30 min at RT. Staining of formalin-fixed tissues requires heating tissue sections in 10mM Tris with 1mM EDTA, pH 9.0, for 45 min at 95°C followed by cooling at RT for 20 minutes

Product Details

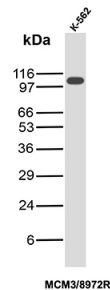
Clone	MCM3/8972R
Gene Name	MCM3
Immunogen	Recombinant fragment (aa 650-750) of human MCM3 protein (exact sequence is proprietary)
Host	Rabbit
Clonality	Monoclonal
Isotype / Light Chain	IgG / Kappa
Mol. Weight of Antigen	115kDa
Cellular Localization	Nucleus.
Species Reactivity	Human
Positive Control	MCF-7, Jurkat or Ramos cells. Human colon or tonsil.

*Optimal dilution for a specific application should be determined.

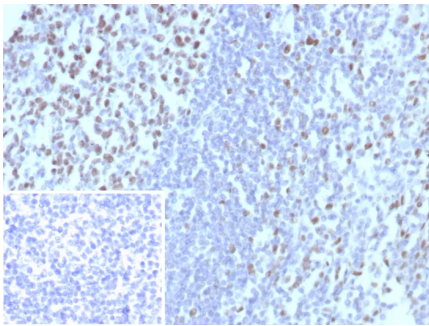
Product Images for Recombinant MCM3 (Proliferation Marker) Antibody



SDS-PAGE Analysis of Purified MCM3 Recombinant Rabbit Monoclonal Antibody (MCM3/8972R). Confirmation of Purity and Integrity of Antibody.



Western blot analysis of K-562 cell lysate using MCM3 Recombinant Rabbit Monoclonal Antibody (MCM3/8972R).



Formalin-fixed, paraffin-embedded human tonsil stained with MCM3 Recombinant Rabbit Monoclonal Antibody (MCM3/8972R). Inset: PBS instead of primary antibody, secondary only control.

Specificity & Comments

Acts as component of the MCM2-7 complex (MCM complex) which is the putative replicative helicase essential for 'once per cell cycle' DNA replication initiation and elongation in eukaryotic cells. The active ATPase sites in the MCM2-7 ring are formed through the interaction surfaces of two neighboring subunits such that a critical structure of a conserved arginine finger motif is provided in trans relative to the ATP-binding site of the Walker A box of the adjacent subunit. The six ATPase active sites, however, are likely to contribute differentially to the complex helicase activity. Required for DNA replication and cell proliferation.

Limitations and Warranty

This antibody is available for research use only and is not approved for use in diagnosis. There are no warranties, expressed or implied, which extend beyond this description. Company is not liable for any personal injury or economic loss resulting from this product.

Supplied As

200ug/ml of Ab purified from Bioreactor Concentrate by Protein A/G. Prepared in 10mM PBS with 0.05% BSA & 0.05% azide. Also available WITHOUT BSA & azide at 1.0mg/ml.

Storage and Stability

Antibody with azide - store at 2 to 8°C. Antibody without azide - store at -20 to -80°C. Antibody is stable for 24 months. Non-hazardous. No MSDS required.

Research Areas

Nuclear Marker
