



Interleukin-7 (IL-7) Antibody

Mouse Monoclonal Antibody [Clone IL7/4269]

Catalog No	Format	Size
3574-MSM9-P0	Purified Ab with BSA and Azide at 200ug/ml	20 ug
3574-MSM9-P1	Purified Ab with BSA and Azide at 200ug/ml	100 ug
3574-MSM9-P1ABX	Purified Ab WITHOUT BSA and Azide at 1.0mg/ml	100 ug

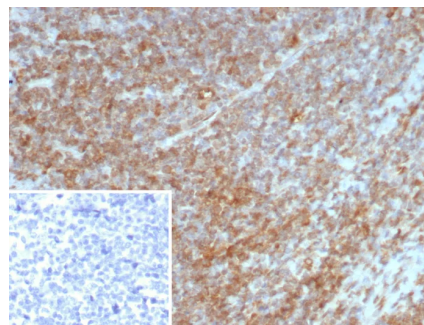
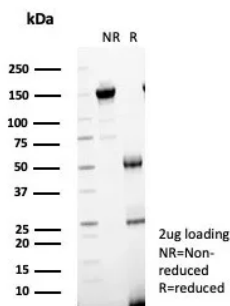
Applications	Tested Dillution	Note
Immunohistochemistry (IHC)	1-2ug/ml	30 min at RT. Staining of formalin-fixed tissues requires heating tissue sections in 10mM Tris with 1mM EDTA, pH 9.0, for 45 min at 95°C followed by cooling at RT for 20 minutes

Product Details

Clone	IL7/4269
Gene Name	IL7
Immunogen	Recombinant fragment (around aa 27-177) corresponding to mature protein of human IL7 (exact sequence is proprietary)
Host	Mouse
Clonality	Monoclonal
Isotype / Light Chain	IgG2 / Kappa
Mol. Weight of Antigen	25kDa
Cellular Localization	Secreted.
Species Reactivity	Human
Positive Control	Human thymus or tonsil tissue.

*Optimal dilution for a specific application should be determined.

Product Images for Interleukin-7 (IL-7) Antibody



SDS-PAGE Analysis of Purified IL-7 Mouse Monoclonal Antibody (IL7/4269). Confirmation of Purity and Integrity of Antibody.

Formalin-fixed, paraffin-embedded human tonsil stained with Interleukin-7 (IL-7) Mouse Monoclonal Antibody (IL7/4269). Inset: PBS instead of primary antibody; secondary only negative control.

Specificity & Comments

Interleukin-7 (IL-7) was originally described as a factor capable of inducing in vitro proliferation of pre-B cells from marrow cultures. The IL-7 gene encodes a protein 177 amino acids in length. IL-7 exerts its biological function through the IL-7 receptor which is expressed on pre-B cells, thymocytes and bone marrow-derived macrophages. The IL-7 receptor is composed of an IL-7 receptor specific chain and the IL-2 receptor γ chain common to the IL-2, IL-4, IL-7, IL-9 and IL-15 receptors. IL-7 stimulation leads to the activation of Janus tyrosine kinase family members JAK1 and JAK3. Other studies have shown that in T cells, the IL-7 receptor-specific chain associates with the Src kinases family Lck and Fyn. IL-7 induces phosphorylation of Insulin receptor substrate-1 (IRS-1) and Insulin receptor substrate-2 (IRS-2), originally called 4PS.

Limitations and Warranty

This antibody is available for research use only and is not approved for use in diagnosis. There are no warranties, expressed or implied, which extend beyond this description. Company is not liable for any personal injury or economic loss resulting from this product.

Supplied As

200ug/ml of Ab purified from Bioreactor Concentrate by Protein A/G. Prepared in 10mM PBS with 0.05% BSA & 0.05% azide. Also available WITHOUT BSA & azide at 1.0mg/ml.

Storage and Stability

Antibody with azide - store at 2 to 8°C. Antibody without azide - store at -20 to -80°C. Antibody is stable for 24 months. Non-hazardous. No MSDS required.

Research Areas

AKT Signaling, B Cell Markers, Cardiovascular, Cytokine Signaling, Hematopoietic Stem Cells, Immunology
