

## MR1 / Major histocompatibility complex, class I-related Antibody

Mouse Monoclonal Antibody [Clone MR1/7577]

Catalog No	Format	Size
3140-MSM1-P0	Purified Ab with BSA and Azide at 200ug/ml	20 ug
3140-MSM1-P1	Purified Ab with BSA and Azide at 200ug/ml	100 ug
3140-MSM1-P1ABX	Purified Ab WITHOUT BSA and Azide at 1.0mg/ml	100 ug

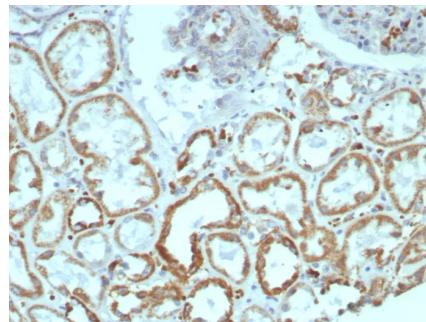
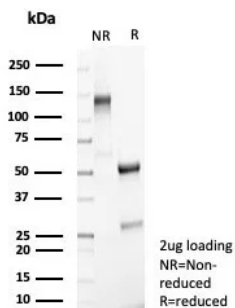
Applications	Tested Dillution	Note
Immunohistochemistry (IHC)	1-2ug/ml	30 min at RT. Staining of formalin-fixed tissues requires heating tissue sections in 10mM Tris with 1mM EDTA, pH 9.0, for 45 min at 95°C followed by cooling at RT for 20 minutes

### Product Details

<b>Clone</b>	MR1/7577
<b>Gene Name</b>	MR1
<b>Immunogen</b>	Recombinant fragment (around aa50-250) of human MR1 protein (exact sequence is proprietary)
<b>Host</b>	Mouse
<b>Clonality</b>	Monoclonal
<b>Isotype / Light Chain</b>	IgG2 / Kappa
<b>Mol. Weight of Antigen</b>	39kDa
<b>Cellular Localization</b>	Secreted. Cell membrane.
<b>Species Reactivity</b>	Human
<b>Positive Control</b>	Human kidney placenta or tonsil.

\*Optimal dilution for a specific application should be determined.

### Product Images for MR1 / Major histocompatibility complex, class I-related Antibody



SDS-PAGE Analysis of Purified MR1 Mouse Monoclonal Antibody (MR1/7577). Confirmation of Purity and Integrity of Antibody.

Formalin-fixed, paraffin-embedded human kidney stained with MR1 Mouse Monoclonal Antibody (MR1/7577). HIER: Tris/EDTA, pH9.0, 45min. 2°C: HRP-polymer, 30min. DAB, 5min.

### **Specificity & Comments**

MR1 (major histocompatibility complex, class I-related), also known as HLALS, is a 341 amino acid single-pass membrane protein that localizes to the endoplasmic reticulum, as well as to the extracellular side of the cell membrane, and contains one Ig-like C1-type domain. Expressed ubiquitously, MR1 exists as a heterodimer with b-2-Microglobulin and plays an important role in antigen presentation, specifically in the development and expansion of mucosal-associated invariant T cells (MAITs). MAITs are located in the gut and are involved in monitoring flora levels, as well as in conveying distress signals to other areas of the body, indicating a role for MR1 in proper digestion and immune system function. MR1 exists as four alternatively spliced isoforms and is encoded by a gene which maps to human chromosome 1.

---

### **Limitations and Warranty**

This antibody is available for research use only and is not approved for use in diagnosis. There are no warranties, expressed or implied, which extend beyond this description. Company is not liable for any personal injury or economic loss resulting from this product.

---

### **Supplied As**

200ug/ml of Ab purified from Bioreactor Concentrate by Protein A/G. Prepared in 10mM PBS with 0.05% BSA & 0.05% azide. Also available WITHOUT BSA & azide at 1.0mg/ml.

---

### **Storage and Stability**

Antibody with azide - store at 2 to 8°C. Antibody without azide - store at -20 to -80°C. Antibody is stable for 24 months. Non-hazardous. No MSDS required.

---