

Recombinant CD8A (Cytotoxic / Suppressor T-Cell Marker) Antibody

Rabbit Monoclonal Antibody [Clone C8/7793R]

Catalog No	Format	Size
925-RBM21-P0	Purified Ab with BSA and Azide at 200ug/ml	20 ug
925-RBM21-P1	Purified Ab with BSA and Azide at 200ug/ml	100 ug
925-RBM21-P1ABX	Purified Ab WITHOUT BSA or Azide at 1.0mg/ml	100 ug

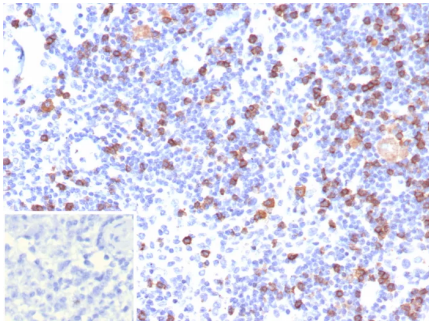
Applications	Tested Dillution	Note
Immunohistochemistry (IHC)	1-2ug/ml	30 min at RT. Staining of formalin-fixed tissues requires heating tissue sections in 10mM Tris with 1mM EDTA, pH 9.0, for 45 min at 95°C followed by cooling at RT for 20 minutes
Western Blot (WB)	2-4ug/ml	

Product Details

Clone	C8/7793R
Immunogen	Recombinant fragment corresponding to the c-terminal cytoplasmic domain of the human CD8a protein
Host	Rabbit
Clonality	Monoclonal
Isotype / Light Chain	IgG / Kappa
Mol. Weight of Antigen	25.73kDa
Cellular Localization	Cell membrane, Secreted
Species Reactivity	Human
Positive Control	Human tonsil spleen or lymph node.

*Optimal dilution for a specific application should be determined.

Product Images for Recombinant CD8A (Cytotoxic / Suppressor T-Cell Marker) Antibody



Formalin-fixed, paraffin-embedded human lymph node stained with CD8a Recombinant Rabbit Monoclonal Antibody (CD8/7793R). Inset: PBS instead of primary antibody; secondary only negative control.

Specificity & Comments

This Mab is specific for the 32kDa alpha chain of human CD8, known as CD8a or CD8 alpha. CD8 is a cell surface receptor expressed either as a heterodimer with the CD8 beta chain (CD8 alpha/beta) or as a homodimer (CD8 alpha/alpha). A majority of thymocytes and a subpopulation of mature T cells and NK cells express CD8a. CD8 binds to MHC class 1 and through its association with protein tyrosine kinase p56lck plays a role in T cell development and activation of mature T cells. For mature T-cells, CD4 and CD8 are mutually exclusive, so anti-CD8, generally used in conjunction with anti-CD4. It is a useful marker for distinguishing helper/inducer T-lymphocytes, and most peripheral T-cell lymphomas are CD4+/CD8-. Anaplastic large cell lymphoma is usually CD4+ and CD8-, and in T-lymphoblastic lymphoma/leukemia, CD4 and CD8 are often co-expressed. CD8 is also found in littoral cell anglioma of the spleen.

2 Union Square, Union City, CA 94587, Tel: 1-866-2-NEOBIO (1-866-263-6246)
orders@NeoBiotechnologies.com, www.NeoBiotechnologies.com

Supplied As

200ug/ml of Ab produced in a mammalian-based expression system. Prepared in 10mM PBS with 0.05% BSA & 0.05% azide. Also available WITHOUT BSA & azide at 1.0mg/ml.

Storage and Stability

Antibody with azide - store at 2 to 8 °C. Antibody without azide - store at -20 to -80 °C. Antibody is stable for 24 months. Non-hazardous. No MSDS required.

Limitations and Warranty

This antibody is available for research use only and is not approved for use in diagnosis. There are no warranties, expressed or implied, which extend beyond this description. Company is not liable for any personal injury or economic loss resulting from this product.
