

Recombinant Sarcomeric Actinin Alpha 2 / ACTN2 Antibody

Mouse Monoclonal Antibody [Clone rACTN2/7361]

Catalog No	Format	Size
88-MSM11-P0	Purified Ab with BSA and Azide at 200ug/ml	20 ug
88-MSM11-P1	Purified Ab with BSA and Azide at 200ug/ml	100 ug
88-MSM11-P1ABX	Purified Ab WITHOUT BSA or Azide at 1.0mg/ml	100 ug

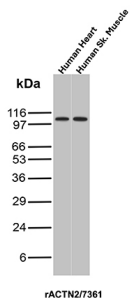
Applications	Tested Dillution	Note
Immunohistochemistry (IHC)	1-2ug/ml	30 min at RT. Staining of formalin-fixed tissues requires heating tissue sections in 10mM Tris with 1mM EDTA, pH 9.0, for 45 min at 95°C followed by cooling at RT for 20 minutes
Western Blot (WB)	2-4ug/ml	

Product Details

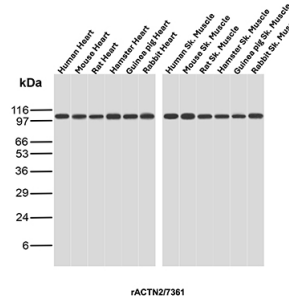
Clone	rACTN2/7361
Immunogen	Recombinant full-length human Sarcomeric Actinin Alpha 2 protein
Host	Mouse
Clonality	Monoclonal
Isotype / Light Chain	IgG1 / Kappa
Mol. Weight of Antigen	103.85kDa
Cellular Localization	Cytoplasm, Myofibril, Sarcomere, Z line
Species Reactivity	Human
Positive Control	Human skeletal or cardiac muscle.

*Optimal dilution for a specific application should be determined.

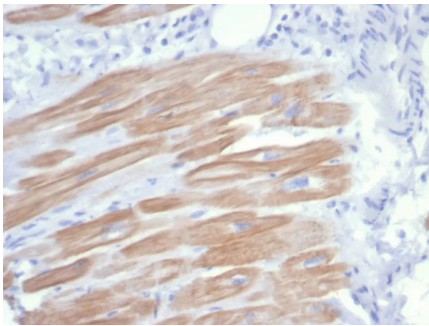
Product Images for Recombinant Sarcomeric Actinin Alpha 2 / ACTN2 Antibody



Western blot analysis of Human Heart and Human Skeletal muscle tissue lysates using Sarcomeric Actinin Alpha 2 Recombinant Mouse Monoclonal Antibody (rACTN2/7361).



Western blot analysis of Heart and Skeletal muscle tissue lysates of different species using Sarcomeric Actinin Alpha 2 Recombinant Mouse Monoclonal Antibody (rACTN2/7361).



Formalin-fixed, paraffin-embedded human heart muscle stained with ACTN2 Recombinant Mouse Monoclonal Antibody (rACTN2/7361). HIER: Tris/EDTA, pH9.0, 45min. 2°C: HRP-polymer, 30min. DAB, 5min.

Specificity & Comments

Alpha actinins belong to the spectrin gene superfamily which represents a diverse group of cytoskeletal proteins, including the alpha and beta spectrins and dystrophins. Alpha actinin is an actin-binding protein with multiple roles in different cell types. In non-muscle cells, the cytoskeletal isoform is found along microfilament bundles and adherens-type junctions, where it is involved in binding actin to the membrane. In contrast, skeletal, cardiac, and smooth muscle isoforms are localized to the Z-disc and analogous dense bodies, where they help anchor the myofibrillar actin filaments. This gene encodes a muscle-specific, alpha actinin isoform that is expressed in both skeletal and cardiac muscles. Several transcript variants encoding different isoforms have been found for this gene.

Limitations and Warranty

This antibody is available for research use only and is not approved for use in diagnosis. There are no warranties, expressed or implied, which extend beyond this description. Company is not liable for any personal injury or economic loss resulting from this product.

Supplied As

200ug/ml of Ab produced in a mammalian-based expression system. Prepared in 10mM PBS with 0.05% BSA & 0.05% azide. Also available WITHOUT BSA & azide at 1.0mg/ml.

Storage and Stability

Antibody with azide - store at 2 to 8 °C. Antibody without azide - store at -20 to -80 °C. Antibody is stable for 24 months. Non-hazardous. No MSDS required.