

Prostate Specific Acid Phosphatase (PSAP) Antibody

Mouse Monoclonal Antibody [Clone ACP/2472]

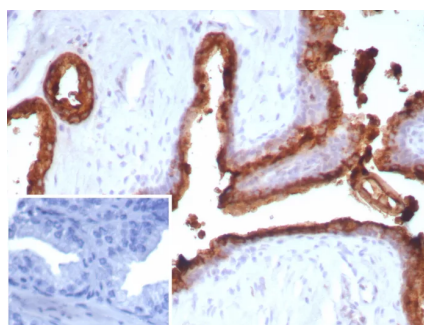
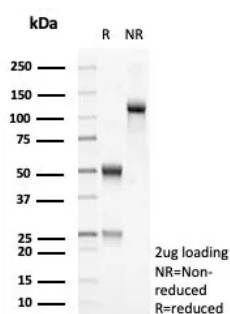
Catalog No	Format	Size
55-MSM8-P0	Purified Ab with BSA and Azide	200ug/ml
55-MSM8-P1	Purified Ab with BSA and Azide	200ug/ml
55-MSM8-P1ABX	Purified Ab WITHOUT BSA and Azide	1.0mg/ml

Applications	Tested Dillution
Immunohistochemistry (IHC)	1-2ug/ml

Product Details	
Clone	ACPP/2472
Gene Name	ACP3
Immunogen	Recombinant full-length human ACP/ protein
Host	Mouse
Clonality	Monoclonal
Isotype / Light Chain	IgG1 / Kappa
Mol. Weight of Antigen	52kDa
Cellular Localization	Cytoplasm.
Species Reactivity	Human
Positive Control	PC12 cells. Normal prostate or prostate carcinoma.

**Optimal dilution for a specific application should be determined.*

Product Images for Prostate Specific Acid Phosphatase (PSAP) Antibody



SDS-PAGE Analysis of Purified PSAP Mouse Recombinant Monoclonal Antibody (ACPP/2472). Confirmation of Purity and Integrity of Antibody.

Formalin-fixed, paraffin-embedded human prostate carcinoma stained with PSAP Mouse Recombinant Monoclonal Antibody (ACPP/2472). HIER: Tris/EDTA, pH9.0, 45min. 2°C: HRP-polymer, 30min. DAB, 5min.

Specificity & Comments

Recognizes a protein of 52kDa, identified as prostate specific acid phosphatase (PSAP). This enzyme catalyzes the conversion of orthophosphoric monoester to alcohol and orthophosphate. It is synthesized under androgen regulation and is secreted by the epithelial cells of the prostate gland. PSAP is found in non-neoplastic adult and fetal prostatic glands, primary and metastatic prostatic carcinomas. It shows no staining in granulocytes, osteoclasts, parietal cells of the stomach, liver cells, renal cell or breast carcinomas.

Research Areas

Immunology

Known Applications & Suggested Dilutions

Immunohistology (Formalin-fixed) (0.5-1.0ug/ml for 30 minutes at RT), (Staining of formalin-fixed tissues requires heating tissue sections in 10mM Tris with 1mM EDTA, pH 9.0, for 45 min at 95°C followed by cooling at RT for 20 minutes), Optimal dilution for a specific application should be determined.

Limitations and Warranty

This antibody is available for research use only and is not approved for use in diagnosis.

There are no warranties, expressed or implied, which extend beyond this description. Company is not liable for any personal injury or economic loss resulting from this product.

Supplied As

200ug/ml of Ab purified from Bioreactor Concentrate by Protein A/G. Prepared in 10mM PBS with 0.05% BSA & 0.05% azide. Also available WITHOUT BSA & azide at 1.0mg/ml.

Storage and Stability

Antibody with azide - store at 2 to 8°C. Antibody without azide - store at -20 to -80°C. Antibody is stable for 24 months. Non-hazardous. No MSDS required.
