

Recombinant CD20 / MS4A1 (B-Cell Marker) Antibody

Rabbit Monoclonal Antibody [Clone MS4A1/8072R]

Catalog No	Format	Size
931-RBM23-P0	Purified Ab with BSA and Azide at 200ug/ml	20 ug
931-RBM23-P1	Purified Ab with BSA and Azide at 200ug/ml	100 ug
931-RBM23-P1ABX	Purified Ab WITHOUT BSA and Azide at 1.0mg/ml	100 ug

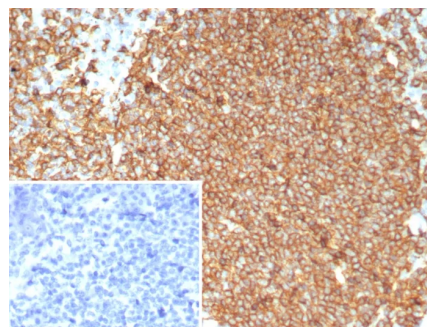
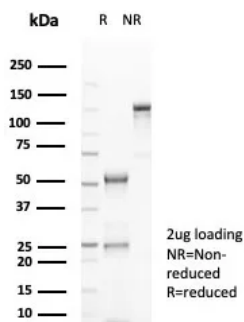
Applications	Tested Dillution	Note
Immunohistochemistry (IHC)	1-2ug/ml	30 min at RT. Staining of formalin-fixed tissues requires heating tissue sections in 10mM Tris with 1mM EDTA, pH 9.0, for 45 min at 95°C followed by cooling at RT for 20 minutes
Western Blot (WB)	2-4ug/ml	

Product Details

Clone	MS4A1/8072R
Gene Name	MS4A1
Immunogen	Recombinant fragment (around aa200-297) of human MS4A1 protein (exact sequence is proprietary)
Host	Rabbit
Clonality	Monoclonal
Isotype / Light Chain	IgG / Kappa
Mol. Weight of Antigen	33-37kDa
Cellular Localization	Cell surface
Species Reactivity	Human
Positive Control	Daudi or human lymphocytes. Human lymph node or tonsil. Raji

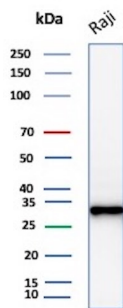
*Optimal dilution for a specific application should be determined.

Product Images for Recombinant CD20 / MS4A1 (B-Cell Marker) Antibody

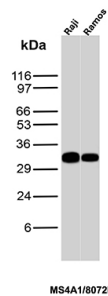


SDS-PAGE Analysis of Purified CD20 Rabbit Recombinant Monoclonal Antibody (MS4A1/8072R). Confirmation of Purity and Integrity of Antibody.

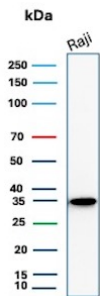
Formalin-fixed, paraffin-embedded human tonsil stained with CD20 Rabbit Recombinant Monoclonal Antibody (MS4A1/8072R). Inset: PBS instead of primary antibody; secondary only negative control.



Western Blot Analysis of Raji cell lysate using CD20 Recombinant Rabbit Monoclonal Antibody (MS4A1/8072R).



Western Blot Analysis of Raji and Ramos cell lysates using CD20 Recombinant Rabbit Monoclonal Antibody (MS4A1/8072R).



Western Blot Analysis of Raji cell lysate using CD20 Recombinant Rabbit Monoclonal Antibody (MS4A1/8072R).

Specificity & Comments

Recognizes a protein of 30-33kDa, which is identified as CD20. It is a non-Ig differentiation antigen of B-cells and its expression is restricted to normal and neoplastic B-cells, being absent from all other leukocytes and tissues. CD20 is expressed by pre B-cells and persists during all stages of B-cell maturation but is lost upon terminal differentiation into plasma cells. This MAb can be used for immunophenotyping of leukemia and malignant cells, B lymphocyte detection in peripheral blood and B cell localization in tissues. It reacts with the majority of B-cells present in peripheral blood and lymphoid tissues and their derived lymphomas. In lymphoid tissue, germinal center blasts and B-immunoblasts are particularly reactive. It is a reliable antibody for ascribing a B-cell phenotype in known lymphoid tissues. Rarely, CD20-positive T-cell lymphomas have been reported. Reactivity has also been noted with Reed-Sternberg cells in cases of Hodgkin s disease, particularly of lymphocyte predominant type.

Limitations and Warranty

This antibody is available for research use only and is not approved for use in diagnosis. There are no warranties, expressed or implied, which extend beyond this description. Company is not liable for any personal injury or economic loss resulting from this product.

Supplied As

200ug/ml of Ab purified by Protein A Column. Prepared in 10mM PBS with 0.05% BSA & 0.05% azide. Also available WITHOUT BSA & azide at 1.0mg/ml.

Storage and Stability

Antibody with azide - store at 2 to 8°C. Antibody without azide - store at -20 to -80°C. Antibody is stable for 24 months. Non-hazardous. No MSDS required.

Research Areas

B Cell Markers, Hematopoietic Stem Cells