

Recombinant CD36 (Platelet & Microvessel Marker) Antibody

Mouse Monoclonal Antibody [Clone rGPIIb/9240]

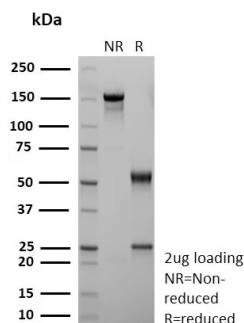
Catalog No	Format	Size
948-MSM12-P0	Purified Ab with BSA and Azide at 200ug/ml	20 ug
948-MSM12-P1	Purified Ab with BSA and Azide at 200ug/ml	100 ug
948-MSM12-P1ABX	Purified Ab WITHOUT BSA and Azide at 1.0mg/ml	100 ug

Applications	Tested Dillution	Note
Immunohistochemistry (IHC)	1-2ug/ml	30 min at RT. Staining of formalin-fixed tissues requires heating tissue sections in 10mM Tris with 1mM EDTA, pH 9.0, for 45 min at 95°C followed by cooling at RT for 20 minutes

Product Details	
Clone	rGPIIb/9240
Gene Name	CD36
Immunogen	Recombinant full-length human CD36 protein
Host	Mouse
Clonality	Monoclonal
Isotype / Light Chain	IgG2b / Kappa
Mol. Weight of Antigen	80-90kDa
Cellular Localization	Cell surface.
Species Reactivity	Human
Positive Control	macrophages microvascular endothelial cells in a tonsil. Heart tissue lysate. monocytes Platelets

*Optimal dilution for a specific application should be determined.

Product Images for Recombinant CD36 (Platelet & Microvessel Marker) Antibody



SDS-PAGE Analysis of Purified CD36 Recombinant Mouse Monoclonal Antibody (rGPIIb/9240). Confirmation of Purity and Integrity of Antibody.

Specificity & Comments

Recognizes a protein of 80kDa-90kDa, identified as CD36. It is expressed on platelets, monocytes and macrophages, microvascular endothelial cells, erythrocyte precursors, mammary epithelial cells, and some macrophage derived dendritic cells. CD36 acts as a receptor for thrombospondin (TSP), collagen types I, IV and V, P. falciparum malaria-infected erythrocytes, and sickle erythrocytes. It also functions as a scavenger receptor, mediating macrophage uptake of oxidized low-density lipoprotein (LDL) and recognition of apoptotic polymorphonuclear leukocytes (PMN). CD36 plays a role in platelet aggregation, macrophage foam cell development, inflammation, and the tissue ischemia observed in sickle cell disease and cerebral malaria. Note that 1-4% of Japanese and East Asia population lack CD36.

Supplied As

200ug/ml of Ab purified from Bioreactor Concentrate by Protein A/G. Prepared in 10mM PBS with 0.05% BSA & 0.05% azide. Also available WITHOUT BSA & azide at 1.0mg/ml.

Storage and Stability

Antibody with azide - store at 2 to 8°C. Antibody without azide - store at -20 to -80°C. Antibody is stable for 24 months. Non-hazardous. No MSDS required.

Research Areas

Cardiovascular, Cytokine Signaling, Developmental Biology, Endothelial Cell Marker, Hematopoietic Stem Cells, Immunology, Infectious Disease

Limitations and Warranty

This antibody is available for research use only and is not approved for diagnosis. There are no warranties, expressed or implied, which extend beyond this description. Company is not liable for any personal injury or economic loss resulting from this product.
